
EMPIRE NEWSLETTER

June 2010

President's Letter

It appears that this year's quilting season is quickly coming to a close. This has been a productive year for the Guild with members initiating new programs and projects. Our membership has grown significantly, and we have had many more guests this year including some from foreign countries. With this increase in membership, it has been wonderful to see new faces becoming involved in all aspects of guild activity.

The Block of the Month has become a noteworthy activity, and is seen by many on the World Wide Web. A self formed group, The Elm Creek Sampler Club based on the works of Jennifer Chiavarini has completed their quilts and next September will begin a different quilt.

Our continuing monthly focus groups in preparation for the 2011 Show will feature a lecture and demonstration on squaring up your quilt. I urge as many of you as possible to attend this important work. A quilt that is not perfectly squared will lose you many points at judging. If you are interested in teaching a group, please contact Janet Randolph. Janet is always on the lookout for new and different subjects.

I would like to thank the Board Members for their support and assistance. Leaving the Executive Committee after an extra year of service is Lauren Dieterich and Gail Lefton. Gail will be the Chair of the Welcoming Committee, and Lauren will continue as Newsletter Editor. Thank you ladies for a job well done. Coming on the Board for September is Beth Pile as Second Vice-President, and Denise Walsh-Horowitz as Secretary.

Our June Fundraiser will consist of three prizes. The first two will be gift bags and the final prize will be the *Flowers for Sylvia* Quilt. All three will be great prizes so please buy your tickets either from Kitty Squire at the Membership table or from Naomi Shelnut and her staff.

Finally, I would like to thank all the members who helped and supported me during what was a difficult year for me personally. Your help and kindness kept me going. Enjoy your summer. —*Paula Kenney*

MEMBERSHIP FOR 2010-2011

Don't forget to renew your membership in the next few months. In order to submit a quilt for our 2011 Urban Inspiration's Show, you will need to be a member in good standing by October 15, 2010.

Membership renewal forms can be found in this newsletter (page 4), online or at the Membership table at the meeting. You can renew in person or through the mail. Don't forget, if you want to receive your Membership Card by mail, just send a SASE along with your Membership renewal and we will be glad to send it to you.



MEETING INFO

SATURDAY,
JUNE 12, 2010

TIME:

11am - 12pm: Board Meeting
10:30am: Focus Groups
1pm - 3pm: General Meeting

LOCATION:

FIT, David Dubinsky Center
Building A, 27th St. & 8th Ave.

PROGRAM:

Judith Larzelere

VENDOR:

Member Flea Market

QUILTER of the MONTH:

Benedicte Caneill

FOCUS GROUP:

Sewing Doll Clothes, 10:30am
Elm Creek Sampler Club, 12pm

BOM:

Hudson River Quilt

LIBRARY: Open

SHARE TABLE: Closed

GUEST FEES:

\$10: Regular
\$5: Student/Senior

June Meeting

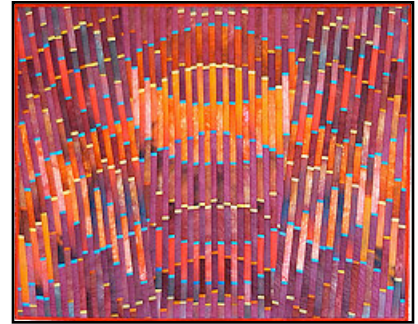
Program & Workshop with Judith Larzelere

JUNE PROGRAM & WORKSHOP

You are in for a treat with Judith Larzelere. She is an incredible artist with color and shape. Her quilts live in museums and shows everywhere. She will bring some of her masterpieces for show.

The workshop on Sunday will teach on Judith's strip piecing method. Students will be given a design formula for choosing fabrics that will be strip pieced and then sewn into a small wall hanging using the quilt-as-you-go method.

The workshop is filled. Please contact Mary Butler at citymary@aol.com or 212-662-7771 to be added to the waitlist.



QUILTER OF THE MONTH

Benedicte Caneill was born in Paris and raised in Toulouse, France. She came to New York in 1981. Benedicte has always been involved with art in many different forms: painting, music and the performing arts including acting, singing, and the traditional danced theater of Kathakali.

In 2001, Benedicte's husband bought her a sewing machine to sew curtains for their new house. In an attempt to learn to sew, she took a log cabin class. It was "love at first quilt" and Benedicte found that this new medium could be a means of expression that would keep her busy and happy.

Whether small or large-scale, her artwork falls in two seemingly opposite categories: figurative and abstract. Both express her multiple interests and experiences: her international travels, her life in France, interactions with different cultures, and her career as a biology teacher in international schools.

In her more recent work, Benedicte starts with plain white or black fabric and through various surface design techniques (dyeing, painting, monoprinting, silk-screening or direct printing), builds up layers and creates patterns. Next she cuts up and reassembles the pieces, sometimes using a grid as a guide or improvising a design that tells a story and express what she has to say at a specific moment. Finally, through intense stitching both by machine and by hand, Benedicte adds a final layer of texture to give more depth to the work.

By the way, Benedicte never did sew the curtains for the house!

FOCUS GROUPS

Making Doll Clothes

Group Leader: Nancy Rabatin

10:30 am - 11:30 am

Questions: janetrandolph@verizon.net or 610-874-3721

Open To: Members who attended Nancy's Doll Making Workshop at the February 2010 meeting.

If you attended Nancy Rabatin's Doll Making workshop at the February guild meeting and you want to make clothes for your doll, please join us! Nancy will supply copies of patterns and will give brief instructions on how to put the clothes together. She will also be available for any new questions or problems that arose when making your doll.

Supply List: Bring your doll! If you have questions about fabric, you can bring what you are working with, but this will be mainly an informational focus group. You'll go home with plenty of ideas and know-how on making doll clothes.

Elm Creek Sampler Club

Group Leader: Helen Beall, Lisa Kehrle, and Lisa Belle, htbeall@yahoo.com or 516-365-9257

12 noon - 1 pm

YES !!! We have more finished tops this month. Lucy Kissiedo and Maxine Townsend Broderick have dazzled us with their smashing results. Such variety of individual expression within our quilting tradition is truly wonderful. Plain to see...our Quilts-R-Us.

No doubt there will be many more completed tops in June, our final gathering of the season.

Next year, our Club will continue to meet, thanks to Lisa Belle who has graciously volunteered to serve as leader and to Lisa Kehrle who will also be available. We all look forward to more blocks, tips, and friendships.

BLOCK OF THE MONTH - HUDSON RIVER QUILT

Do you love 1800's reproduction fabrics and traditional quilt patterns? This classic style quilt may end up in your home if you whip up one of these blocks. It takes only two 10" squares and 20 minutes to make this block! If you have some reproduction layer cakes (precut 10" squares), the cutting is done for you already.

For more information, visit www.empirebom.blogspot.com.

—Karen Griska, Helen Beall, Lisa Belle, Shirley Clark, Lisa Kebrle, Nick Alves

**LIBRARY**

Well my surgery went well, but I will be in my ankle to mid-thigh cast until the second week of June. Thanks for everyone who helped with the May Library. The last minute shift of the Library's location caused some problems, but I'm told that all well went. Books and magazines were donated by: Verna Fitzgerald, Sally Goodwin, Margaret Kelly, Sheila Molitz, Alice Palmer, Rita Reid, Sonia Rieber and Hillary Stillman. Thanks!

June will be our last meeting until September, so ALL books must be returned on June 12. That means returned to our FIT meeting place, not as one member who wanted to return her overdue book to my house. Sorry, return by June or pay the late fine(s). I hope to be on duty in June just returned books and donations. Over the Summer, Tina Barth and I will collect all of the books that will be sold at our annual book sale. The Board will schedule that date. —Sylvia Hughes

CHARITY

We'd like to thank all the members who brought in more than 20 finished quilts (some taken home from the March Charity Day meeting), baby caps, fabric and other items. When we add the finished quilts received this month to those completed in March and April our members completed over 200 charity quilts this spring. Local and regional organizations are so grateful for these quilts that we hope the momentum continues. Please look on the Services page of the website for a list of organizations which receive our donations and ideas for items you can make. Also, remember that you can sponsor and manage a special charity project - like the one Lee Ebs ran last fall for the Veterans shelter, the project Diane Rubenstein is managing for local pet shelters or the one Victoria Findlay Wolfe mentioned at the meeting on Saturday (see page 7). Have a good summer, and please keep making charity items. —Denise Walsh-Horowitz, Jennifer Bigelow and Pam Leonard Wexler

SHARE TABLE

Just a reminder there is no share table next month. Wishing you all a good summer. See you in September, and keep bringing your scraps for the share table. —Anna Krassy and Veronique Milliez

TREASURER'S REPORT

Due to space limitations, the Treasurer's report is condensed. A complete version is on the website, or you can contact Anna Krassy at quilterme@gmail.com or 212-242-3253 to have a copy mailed to you.

As of 5/16/2010		
	MTD	YTD Total
Beginning Balance	\$ 50,489.81	\$ 42,802.30
Income	\$ 4,289.25	\$47,152.49
Expenses	\$ 2,473.46	\$37,649.19
Ending Balance	\$ 52,305.60	\$ 52,305.60

Upcoming Events

PROGRAMS FOR THE 2010-2011 SEASON

The next meeting of Empire Quilters will take place on September 11, 2010. We are currently fine-tuning our listing of 2010-2011 events. Please check our website over the summer for information about the 2010-2011 programs. Next season will be another busy and fun quilting season.

DECEMBER FUNDRAISER

Several of our members have already thought out what they will be donating to Auction at the December meeting. The auction will be only as successful as the effort that our Membership puts into it. We are looking for not only quilted items, but also for gift baskets, gift certificates, fabric, clothing—anything you think our members and their guests would be interested in bidding on. If you have an item you wish to donate, contact Contact Kitty Squire (kesquilts33@msn.com | 718-541-5545) or Larry Gifford (lawgifford@me.com | 917-513-8351).

FEBRUARY 2011 MEETING

We had such a positive response to our February program of Members teaching Members, that we will be repeating it again this year. However, we need ideas from you for what you would like to see taught and/or teach. Please either contact Kitty Squire or put the information into the suggestion box. We would like to have 5 or 6 workshops and would love to know what YOU would be interested in.



Renew your guild membership! 2010 – 2011 Empire Quilters Guild Membership Renewal

1. Dues for Guild Meeting Season Sep 2010 – Jun 2011: \$55.00 (all ages)

2. Contribution: Additional tax-deductible contribution (optional):

3. Newsletter: Select *one* method to receive your newsletter:

Email to email address: _____

First Class Mail: **\$5.00 additional annual fee to cover mailing costs**

4. Contact Information (please print):

Name: _____ Telephone: _____

Address: _____ Cell: _____

Email: _____

City, ST, Zip: _____ Birthday: _____

5. Submit Form:

Bring completed form to a meeting,
or mail to: **Empire Quilters, Inc.**
Old Chelsea Station
P.O. Box 1293
New York, NY 10113

- ▶ Enclose a check for your annual dues, payable to: *Empire Quilters*, or bring cash to a meeting (no credit cards accepted).
- ▶ Please pick up your membership card at the next guild meeting.
- ▶ *Memberships are not acknowledged by mail. If you want to have your membership card mailed to you, please enclose a self-addressed, stamped envelope.*
- ▶ For more information see: www.EmpireQuilters.net

Membership Dues: \$ **\$55.00**

Contribution: \$ _____
(Optional)

1st Class Mail Fee: \$ _____
(n.a. for email)

Total Enclosed: \$ _____

2011 Show

The 2011 Empire Quilt show will take place on Saturday, March 26th and Sunday March 27th with setup on Friday, March 25th. The show will be held, as before, at FIT.

Admission to show: \$10/day, \$18/both days. Children under 5 attend for free. No discounts for seniors or students or groups.

Show Entry: Empire Quilt members in good standing by October 15th, 2010 will be eligible to submit one or two entries, but only one entry is guaranteed to be hung in the show. Hanging of second quilt will be based on available space and determined by the layout committee. The fee for submission is \$20 non-refundable and it is \$20 whether you submit one or two quilts. Each member who submits a quilt is required to volunteer a minimum of four hours preceding or during the show.

Judging: Judges this year will be Pat Yamin and Sandra L. Dorrbecker, NQA accredited. Quilts will be judged against all others in the category — not on a point scale and there must be a minimum of six quilts in each category before a ribbon is awarded.

2011 Empire Quilters Quilt Show Categories:

100 TRADITIONAL QUILTS

100-H Hand Quilted by maker

100-M Machine Quilted by maker

Quilts based on traditional patterns. Pieced and/or Appliqued, or a combination of pieced and applique. Width 25" to 90", Length 25" to 96"

200 ART QUILTS

Hand or machine quilted by the maker. Can be pictorial or abstract. Techniques include photo-transfer digital imagery and embellished quilts other than Crazy Quilts. Embellished Quilts must have three-dimensional additions, such as beads, buttons, lace, fibers, etc., that draw major impact from the embellishments, not just subtle additions.

Width 25" to 90", Length 25" to 96"

300 SPECIAL TECHNIQUES

This category includes yo-yo quilts, cathedral windows, whole-cloth quilts or crazy quilts. Crazy quilts and yo-yo quilts do not require quilting but can be tied. Width 25" to 90", Length 25" to 96"

400 MINIATURE QUILTS

All aspects of the quilt are reduced in scale. Any technique. Hand or machine quilted.

Width 12" to 24", Length 12" to 24"

500 GROUP QUILTS

Two or more quilters worked on the quilt. One of the quilters must be an Empire Guild Member. Any technique. Hand or machine quilted. Quilts quilted (either hand or machine) for payment MUST be in this category.

Width 25" to 90", Length 25" to 96"

President's Challenge: Landmarks of New York

In keeping with the theme of a *Subway Series*, I think it will be wonderful for the challenge quilt to be complimentary to our show quilt.

Your quilt should be no larger than 18" wide by 22" high. You may use any type of quilting, incorporating beads, buttons, paint — it's your quilt, the sky's the limit! The subject should be a recognizable place or thing, otherwise it should be obvious in the title.

Enjoy yourselves and have fun with it. Prizes will be awarded.

Notices

FLOWERS FOR SYLVIA FUNDRAISER

As mentioned in last month's newsletter, Diane Paul has made a quilt titled *Flowers for Sylvia* with a flower block of the month project from former President Sylvia Zeveloff. We will be raffling the quilt in June to raise money for the Guild. Tickets will be available for purchase at the June meeting; please see Kitty Squire.

SUGGESTION BOX

Once again this month, we received a number of interesting suggestions from our members:

- Bonnie Hunter was suggested as a great teacher and lecturer for the Guild to invite.
- For Show judging committee, consider requiring quilts to be designed by the individual; no classwork or kits.
- A suggestion was made that individuals could make voluntary "gifts" to the Guild for whatever they can afford.
- For the February Members teaching Members workshops, a suggestion was made to have a class on slightly more advanced paper piecing.
- It was also suggested that much of what is discussed at the business meeting could be handled through the newsletter, hopefully shortening the meetings.
- In addition, someone suggested that any books donated go to the library, not be auctioned.

Please continue to make your suggestions and each month they will be published. If you have a comment about anything appearing here, you are welcome to use the box to make it. This is your Guild and the Executive Board is very interested in your ideas and comments.

EMPIRE QUILTERS MEMORABILIA

Once again in June, you will be able to purchase our wonderful Empire Quilters tee shirts, lanyards, pins and shoulder bags at the Membership table. Be sure to check them out. Just what you need for the summer!

Tee Shirts: \$15.00, Bags: \$10.00, Lanyard or Pin: \$4.00, Pencils: \$2.00. If you want to buy all of them together: \$25.00.

REMINDER - EMPIRE QUILTERS IS ON FACEBOOK

In the April newsletter we let you know that EQ has joined Facebook. Many EQ members have already become "fans." If you haven't already joined in, we encourage you to become a fan of the Empire Quilters page and expand the benefit of being an EQ member by sharing news, asking quilting questions and getting help from others, and by posting stories about your quilting adventures. This summer, use Facebook to find friends to attend quilting events with or bounce ideas around for your 2011 show quilt!

Facebook is a fun way to stay connected with other members — and this is an open page so we can be connected with quilters all over the world! To get started, look for the link on the home page of the guild website www.empirequilters.net, or go directly to the guild's Facebook page: www.facebook.com/empirequilters.

MONTHLY FUNDRAISERS

How often have you won a prize bag and thought, where DID this stuff come from? The answer is that it comes from you. We collect donations each month and sort them into the prize bags either for that month or the following one. We love receiving new or gently used items such as patterns, fat quarters, books, magazines, rulers, notions, threads, notebooks, tote bags, beads, jewelry, buttons, etc. The items do not necessarily have to be quilt related. A good rule of thumb when donating is, would you like to receive it? Please do not donate junk.

We are also looking for Members to help with this committee. Our own wonderful "Hat Lady", Naomi Shelnut, has agreed to continue selling tickets, but she is unable to carry all the supplies back and forth each month. In addition, she is going to need more people to help her sell—hats not necessary, but fun! Please contact Paula Kenney (president@empirequilters.net | 212-982-8043) or Kitty Squire (kesquilts33@msn.com | 718-541-5545) if you are interested in helping with this committee. This is an important money-raising (and fun!) activity for the guild.

Member News

CONGRATULATIONS TO OUR MEMBERS!!

Karen Monath's Quilt to appear in the Vermont Quilt Festival

Karen Monath's quilt Kaleidoscope has been accepted into the upcoming Vermont Quilt Festival. Guild members had a first glimpse of this quilt at our November 2010 guild meeting. Yes, there were many ooh's and ahhh's as she unveiled this large and colorful piece. Kaleidoscope will be a wonderful addition to the Vermont show.

Karen Griska Launches Online Quilt Museum

We're extremely pleased to report that guild member Karen Griska has launched the newest online quilt resource — Online Quilt Museum. Quilters can post pictures of their quilts, and see hundreds of quilts by other quilters! The site is well organized, easy-to-navigate, and is a friendly place to spend time looking at beautiful quilts! There is a lot to explore: from galleries, and exhibits, to blogs, and helpful hints.



We encourage our members to visit and explore the Online Quilt Museum at www.onlinequiltmuseum.com and we congratulate founder Karen Griska for this new resource.

Diana Berthold's quilt featured on publication cover

Diana Berthold has a quilt gracing the cover of the April 9, 2010 issue of The Chronicle of the Horse. Diana's quilt, "Dressage Horses Love Musical Freestyle" is one of four pieces made by Diana using eggshell, red and black fabrics with printed musical notes. The inspiration came from the Devon Dressage Show where one can watch the beautiful and talented horses and riders "dancing to music." Diana's quilt is the first quilt to ever appear on the cover of a publication that normally features fine art created by well known artists.

LOCAL SHOW INFORMATION

Quilts in the Valley, by Wiltwyck Quilters Guild

June 5-6, 2010

Ulster Community College, Stone Ridge, NY

www.wiltwyckquilters.org

Timeless Treasurers Quilt Show, by Colonial Quilters Guild

June 5-6, 2010

Charles Chrin Community Center, Easton, PA

www.colonialquilters.org

Vermont Quilt Festival

June 25-27, 2010

Champlain Valley Expo, Essex Junction, Vermont

www.vqf.org

Quilts All Around the Town, by Clamshell Quilt Guild

July 17-18, 2010

College Center, Connecticut College

www.clamshellquiltguild.org

Maine Quilts 2010, by Pine Tree Quilt Guild

July 30 - August 1, 2010

Augusta Civic Center, Augusta, Maine

www.mainequilts.org

CALL FOR QUILT DONATIONS

Guild member Victoria Findlay Wolfe is heading up an effort to collect quilts for homeless families in the New York City area. Victoria's quilt drive — Bumble Beans Basics — aims to gather as many finished quilts as possible. Their current goal is 700 quilts. It's an ambitious undertaking, but is possible with the help of generous quilters throughout the area.

Visit the Bumble Beans Basics website for complete information about the quilt collection effort — including sizes needed, photos of completed quilts, suggested patterns, sponsoring and supporting organizations: www.bumblebeansbasics.com

The quilts will be distributed by Basics, Inc., a community based organization located in Bronx, New York. For more information about Basics, Inc., visit www.basicsinc.org.



Sew Time Sewing Centers makes Quilting Fun!

Pfaff Creative Sewing Centers

#1 in CUSTOMER SUPPORT!

EXPERT REPAIRS AND FREE ESTIMATES FOR ALL BRANDS!

EXCITING QUILTING CLASSES & BLOCK OF THE MONTH!
SEE OUR NEW FALL SCHEDULE AT SEWTIME.COM

#1 QUILTER'S CHOICE PFAFF IDT DUAL FEED
(zero fabric slippage)

SEE OUR WALL TO WALL QUILT FABRIC and FAT QUARTERS!



**NOTIONS, BOOKS,
PATTERNS, SUPPLIES,
SCISSOR AND PINKING
SHEAR SHARPENING
and MUCH MUCH MORE!**

Coupon Savings just for our Empire Quilt Guild Members!

Buy two yards of fabric and get one Free

(one per person please)

Buy two spools of thread and get one free

(one per person please)

25% off any quilting supply

(one per person please)

Buy two fat quarters and get one Free

(one per person please)

\$1.99 Any Size Scissor Sharpening

78-35 Springfield Blvd. Bayside, NY
QUEENS 718-776-1900

Sewtime.com

27-97 Middle Country Rd. Lake Grove, NY
LONG ISLAND 631-737-3944



For All Your Quilting Needs

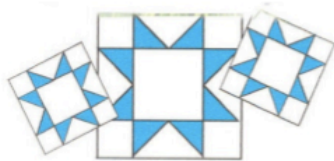
**Bemina Education Center
& Machine Sales**

133 West 25 Street
www.cityquilter.com
212-807-0390

**Tuesday - Friday, 11 to 7
Saturday, 10 to 6
Sunday, 11 to 5**

CQ's "City Collection" expands with "Times Square" available in July





STOVER QUALITY QUILTING

All over Patterns, In the Ditch,
Marked and Stamped Patterns, plus Combinations

All hand guided

Backings and Battings also available

For free brochure, price list and information,
please call 1-800-521-4171 or 573-377-2303

Or write to:
Stover Quality Quilting
606 North Ash, Stover, MO 65078

e-mail: stoverqualityquilting@yahoo.com
website: www.stoverquilting.com

CELEBRATING over 60 years of Custom Machine Quilting

Harvey's
Sew Right Sewing Machines



There's a reason why we're the
Most Recommended
Sewing Machine Dealer in New York

The Best Repairs < The Best Selection
The Most Knowledgeable Staff
And integrity and trust built up
over the last 37 years
But talk is cheap....
Just ask your quilting friends about us

223-20 Union Tpke
Bayside, Queens, NY 11364
718-468-5858 www.sewright.com
Always 10% off repairs for guild members



Cat's Eye Quilt Studio

Longarm Quilting Services

We use a 14-foot-wide Gammill quilting machine loaded with Statler Stitcher, a computerized stitching function, and quilt all-over stitching as well as free-hand custom quilting.

We offer a 10% discount on quilting services to all members of Empire Quilters.

Backings and battings are available.

202 Pigeon Creek Road
Pottstown, PA 19465

www.catseyequiltstudio.com



FABRIC SEWING STUDIO
LONG ARM QUILTING
CUSTOM COMMISSIONS



103 Danbury Rd. Ridgefield, CT
203-431-0023
www.theQuiltersAlley.com

10% discount with guild card or nametag

Reminders!

- * **Renew your membership!** See form on page 4.
- * **Tell us about your successes**
Please keep us informed of your awards, magazine articles, or other publications over the summer. We'll do our best to post these on our website and include in the newsletter. Email info@empirequilters.net.
- * **September Newsletter Deadline - August 18**
Send articles to newsletter@empirequilters.net.

EXECUTIVE BOARD

President: Paula Kenney
212-982-8043 - pdkenney44@aol.com

First VP: Alice Brody
212-865-0163 - alicebrody@aol.com

Second VP: Lauren Dieterich
212-674-6174 - lauren.dieterich@gmail.com

Treasurer: Anna Krassy
212-242-3253 - quilterme@gmail.com

Secretary: Gail Lefton
718-762-5499 - glefton@idesco.com

2010-2011 Calendar

September 11, 2010

October 9, 2010

November 14, 2010 (Sunday)

December 11, 2010

January 8, 2011

February 12, 2011

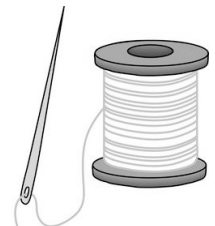
March 12, 2011

April 9, 2011

May 14, 2011

June 11, 2011

Empire Quilters
Old Chelsea Station
PO Box 1293
New York, NY 10113



FIRST CLASS MAIL - DATED MATERIAL - PLEASE DELIVER IMMEDIATELY