
EMPIRE NEWSLETTER

May 2010

President's Letter

As I was walking down Park Avenue the other day, I noticed that the trees were no longer merely skeletons. Those tight buds had finally broken through and Park Avenue was alive with spring. It is interesting to note that amid so many trees and flowers, nothing looked strange or out of place. Colors were put together that many of us would never use and somehow it all worked. Imagine being so free when you make a quilt that you take such chances with shapes and color!

As most of you are aware, we have a quilt show next year. I would love to see all of our members take the time to begin a new quilt for it. Or, even better, do a little spring cleaning and check out your closet. I will bet that all of us have countless surprises (some good, some bad) waiting to be finished. Wouldn't it be great if next year at this time we were all heaving sighs of relief at no longer having closets full of UFOs!

Okay now, the day dreaming is over. Each of us has the potential to make a quilt for the show. While I know that the show layout committee would not agree, I think it would be extraordinary if every member of Empire were able to submit a new quilt for the show. So, let's use the inspiration of a bright new spring to make a quilt!

At the May meeting we will be voting on the nominations for 2nd Vice President and Secretary. The nominees are Beth Pile for 2nd VP and Denise Walsh-Horowitz for Secretary. In addition, we need to vote on the nomination of Gail Lefton for Chair of the Welcoming Committee.

I urge you all to look over the proposed budget for the 2011 show. If you have questions, bring them to the May meeting for discussion.

See you in May! --*Paula Kenney*

WELCOME TO OUR GUESTS!

There were 12 guests at the meeting on Saturday, including 2 from Scotland! In addition, over 175 members attended the Betty Pillsbury lecture.

Our April guests included:

Linda Andrews, Susan Andrews, Caorl Kezdau, Katherine Knauer, Sylvia Mendel, Rosemari Paykin, Sarah Pearson, Mary Pitta, Margaretta Richards, Barbara Sloane, and our guests from Scotland, Linzi Upton and Tracy Gow.



MEETING INFO

SATURDAY,
MAY 8, 2010

TIME:

11am - 12pm: Board Meeting
10:30am: Focus Groups
10am - 3:00pm: General Meeting

LOCATION:

FIT, David Dubinsky Center
Building A, 27th St. & 8th Ave.

PROGRAM:

Trish Chambers

VENDOR:

Cultured Expressions

QUILTER of the MONTH:

John Kubiniec

FOCUS GROUP:

Funky Folk Art Button Pin,
10:30am
Rescued Animal Quilts, 11:30am
Elm Creek Sampler Club, 12pm

BOM:

Selvage House

GUEST FEES:

\$10: Regular
\$5: Student/Senior

May Meeting

Program with Trish Chambers

PROGRAM - THE LEGEND OF FREEDOM QUILTS

Guest speaker Trish will present the world of underground quilts which were the telegraph of their day for those seeking the safe way to escape servitude and slavery. Trish presents in costume so come and discover the way quilts helped in the fight to freedom.

Trish Chambers is a businesswoman, author and Civil War re-enactor. She has appeared on and consulted with the History Channel, appeared on local TV stations and radio and also participated in the making of the movie "Gods and Generals." For more information about Trish Chambers and her presentations about the history of America visit her production website: [Trish Chambers Productions](http://TrishChambersProductions.com).

QUILTER OF THE MONTH

John Kubiniec has been an avid quilter for over 10 years, but wanted to learn to quilt for a much longer time. He bought a sewing machine "on speculation" - speculation that if he had a machine he might learn to sew and quilt. The machine stayed in the closet for several years. One day he stumbled across The City Quilter and signed up for a class - the rest is history. He began buying up fabric and continues to buy more fabric and quilt (and buy more fabric). Before coming to quilting, John worked in ceramics specializing in 17th Century Slipware. He also has interests in cross stitch and embroidery. John tries to make the annual summer pilgrimage to Quilting by the Lake - this summer he will be taking a class in indigo dyeing. John has many finished quilts and many UFO's - his very first quilt is in the UFO category. To fund his fabric addiction, he makes a living as organist at St. James Roman Catholic Church in Springfield, NJ and coordinates the music for the Sunday evening liturgy for the Fordham University Lincoln Center Campus.

FOCUS GROUPS

Funky Folk Art Button Pin

Group Leader: Judith Hoffman Corwin

janetrandolph@verizon.net or 610-874-3721

10:30 am - 11:30 am

We will cut a simple shape out of fabric (supplied in class), and add our "focus button" first. Then we surround it with other buttons to form our pin, and add our button chain for interest and movement



Supply List: Basic sewing supplies: Scissors; embroidery floss or quilting thread in colors to compliment your buttons; 25 -50 buttons in assorted sizes (from ¼" to 1½), shapes and colors. A special larger button for your focus button. A 1" pin for back. Needle with large eye to fit your thread.

Quilts for Rescued Animals - Demonstration

Group Leader: Diane Rubenstein

11:30 am - 12:30 pm

Come see a demonstration on the easiest way to do a cage comfort quilt. Spring time is when there is an influx of kittens and the shelters are overflowing with animals that have been brought in due to the financial situation of many people. Your help is needed and greatly appreciated. *No supplies are needed.*

Elm Creek Sampler Club

Group Leader: Helen Beall, Lisa Kehrle, and Lisa Belle, htbeall@yahoo.com or 516-365-9257

12 noon - 1 pm

We have another finished top! Betty Belford's 12-block Sampler is simply stunning. Her vintage Kansas fabrics and her exquisite workmanship have won our hearts, indeed. Energized by her achievement, we are pressing on towards the finish line with the final block of the year.... Chimneys and Cornerstones in May. Can you believe how far we've come?

BLOCK OF THE MONTH - SELVAGE HOUSE

Have you tried selvage quilting yet? Are you saving your selvages? I'm betting that you won't have to buy any new fabric for this Block of the Month!

If you make something else with selvages, email a photo to karengriska@optonline.net for exhibit on the Selvage Blog: <http://www.selvageblog.blogspot.com/>.

--Karen Griska, Helen Beall, Lisa Belle, Shirley Clark, Lisa Kehrle, Nick Alves



LIBRARY

Donations of magazines and books came from: Jane Adler, Priscilla Blakemore, Debby Chen, Laura Fandino, Renee Fields, Marge Geary, Kate Iscol, Debra Levin, Veronique Milliez, Gardy Nadler, Sara Niego, Ulla-Britta McCarthy, Peggy McGeary, Sonia Rieber, Marie Sandauer and Mary White.

Some of the books available for borrowing in May are : *Mandelas of the Celts*, *Hand Applique with Alex Anderson*, *Quiltscapes II*, *Carry with Style*, *Thread Calligraphy*, and the Spring 2010 issue of the "NQA Quarterly."

If someone mistakenly picked up the book *Best of Black Mountain Quilts* from the Library table, please bring it back in May. May is the last month that you can borrow from the library, and all books must be returned at the June meeting.

I won't be at the May meeting (I am having my broken knee repaired), but Tina Barth will be there together with our great staff Debby Chen, Nancy Rabatin, Sandra Samaniego and my friend Pat Henry. --*Sylvia Hughes*

CHARITY

We would like to thank the Empire Quilters members who returned and donated quilts and fabric for this meeting: Jane Adler, Cathy Anderson, Helen Beall, Shirley Beckwith, Betty Belford, Lisa Belle, Carmen Caldeiro, Ethel Campbell, Shirley Clark, Megan Cuffy-Netty, Fannie D'Aveno, May Eason, Verna Fitzgerald, Paula Frederick, Barbara Fricke, Marge Geary, Nicole Gustafson, Wini Handel, Joan Hellmann, Felica Ingram, Juliana Kalloo, Golde Kantor, Margaret Kelly, Anna Krassy, Cheryl Kulakoff, Claire Leffel, Sheila Molitz, Karen Monath, Cathy Peterson, Judy Shapiro, Stefanie Sheehan, Andrea Tebesceff, Anne Townley, Rhona Triggs, Marian Webber, Arlene Wiczuk, Maggie Williamson. Thanks so much for returning the quilts so promptly and keep up the great work. Have a great month.

--*Denise, Jennifer and Pam*

TREASURER'S REPORT

Due to space limitations, the Treasurer's report is condensed. A complete version is on the website, or you can contact Anna Krassy at quilterme@gmail.com or 212-242-3253 to have a copy mailed to you.

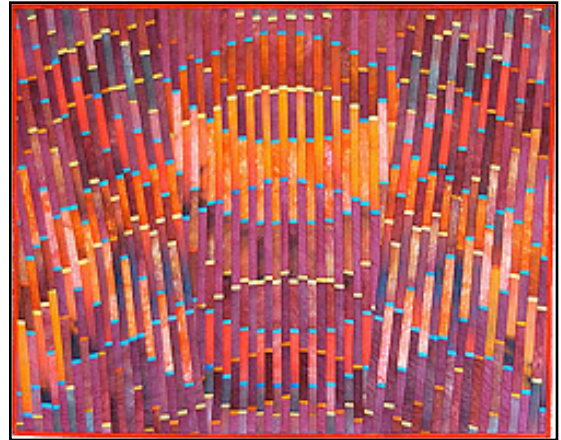
Guild	As of 4/10/10	YTD Total
Beginning Balance	\$ 49,449.33	\$ 42,802.30
Income	\$ 3,477.68	\$ 42,863.24
Expenses	\$ 2,437.20	\$ 35,175.73
Ending Balance	\$ 50,489.81	\$ 50,489.81

Upcoming Events

JUNE PROGRAM & WORKSHOP WITH JUDITH LARZELERE

You are in for a treat with Judith Larzelere. She is an incredible artist with color and shape. Her quilts live in museums and shows everywhere. She will bring some of her masterpieces for show and conduce a class the day following the meeting to step you through her process of color selection and placement.

The workshop on Sunday will teach on Judith's strip piecing method. Students will be given a design formula for choosing fabrics that will be strip pieced and then sewn into a small wall hanging using the quilt-as-you-go method. Special emphasis will be on color selection. The cost is \$60. Please contact Mary Butler at citymary@aol.com or 212-662-7771 to sign up.



JUNE FLEA MARKET

Mark you calendars! The next Members' Flea Market will take place at the June 12, 2010 guild meeting.

All of our tables have been reserved, so we will have an extremely successful flea market. If you missed out on reserving a table, you can still contact Kitty Squire at kesquilts33@msn.com or 718-541-5545 and she will put you on a waiting list.

DECEMBER FUNDRAISER

This December, we will be having a major auction to raise money for the 2011 show. We are letting you know now so that you can start thinking about items you wish to donate for auction. We will not charge guest fees, so you can bring your non-quilting friends to ooh, aah and buy Empire Quilters' spectacular offerings. The items to be auctioned do not have to be quilted items only-if you want to donate Broadway show tickets, visits to a spa, manicures, pedicures, or plants, we welcome them all. Make sure that any items you donate are in prime condition. As you collect donations, please let Larry Gifford or Kitty Squire know so that we can keep a record of them. Those who remember our auction that raised funds for our 2007 show will be very happy to know that John McCall who did such a brilliant job that year, will once again be serving as our auctioneer. This will be a particularly busy meeting as we will also be collecting stockings and teddy bears!

2011 Show

The 2011 show budget was submitted to the board and will come to the membership for a vote at the May Guild meeting. If you didn't pick up a copy at the April meeting, a copy of the budget can be accessed online. There will also be copies available at the May guild meeting. Judges have been selected for the 2011 quilt show. The Judging Committee is working on tightening up the rules and regulations for quilt submission and is working on a form that will clearly define categories. Entrance fees have been revised. It is still early in the planning stage for the March 2011 show, but the committees are excited and hard at work.

Notices

OUR CONDOLENCES

The guild wishes to express its condolences to Roz Manor and her family on the death of Roz's father. He passed away on April 11.

FLOWERS FOR SYLVIA FUNDRAISER

As mentioned in last month's newsletter, Diane Paul has made a quilt titled *Flowers for Sylvia* with a flower block of the month project from former President Sylvia Zeveloff. We will be raffling the quilt in June to raise money for the Guild. Tickets will be available for purchase at the May and June meetings; please see Kitty Squire.

SUGGESTION BOX

There is now a suggestion box at the Membership table for you to give your ideas for the running of the Guild. These will be passed on to the various committee chairs. Below are some of the suggestions from our members for this month:

- Please consider having the monthly fundraisers at various times during the meeting to accommodate those members who have to leave early.
 - Please have a workshop and/or focus group on straightening and squaring your quilt before the borders are attached.
 - As a Speaker: Emily Richardson of Medea, PA. As a vendor: Lonni Rossi of Ardmore, PA.
-

EMPIRE QUILTERS MEMORABILIA

Spring has finally arrived and summer is just around the corner. To get in the mood for short sleeve weather, we will again have our short sleeve, bright tee shirts available for purchase at the Membership table in April. Of course, you can also get our wonderful lanyards, pins, pencils and shoulder bags as well. Make sure that you are dressed for success this spring with your bright tee shirts!

Tee Shirts-\$15.00, Bags \$10.00, Lanyard and pin-\$4.00, Pencils-\$2.00. If you want to buy all of them together-\$25.00.

HELP UPDATE THE WEBSITE

The [Quilting Resources](#) page on the Empire Guild's website is an extensive list of local addresses and phone numbers of businesses that support our Guild and/or sell all kinds of fabric, beads, buttons and other quilting supplies. Stores go out of business and relocate. We need to update this information for members as well as for visitors to New York City. Do you have new information from your favorite shop?

Call Myrna Williams at 212-580-1846.

MEMBERSHIP DUES UPDATE

At the April 10, 2010 guild meeting, the membership approved by majority vote an increase in dues to \$55 for all members, eliminating the reduced dues for senior citizens and students. We last raised our dues in 2007 and since then, our rental alone has increased from \$5,000 to over \$15,000. We need to increase our dues in order to be able to cover the increase in rent for next year.

In addition, it was decided that there would be a \$5.00 surcharge for those members who receive their newsletter by U.S. Mail. This will cover the cost of mailing it only.

The new membership form is available below and on the website. If you renew by mail and would like to receive your Membership card before the next meeting, you can enclose a SASE and we will be happy to mail it to you. Remember, you must be a member in good standing to submit a quilt for our 2011 Show.

PROPOSED BYLAWS CHANGES

At the April 10, 2010 meeting, the Board voted to recommend a change to the bylaws requiring a review of the dues rate at least biennially. The bylaws must also be amended to reflect the changes to membership dues for 2010-2011. Changes to the bylaws need to be approved by vote of the membership. Therefore, at the May meeting, we will be discussing and voting on the following proposed changes:

- Removal of Article III, Section 2: Senior membership is offered to any person 65 years of age or older interested in the art of quilting upon payment of prorated annual dues as set by the Board of Directors. Other sections in this Article will be renumbered.
- Add Section 3 for Article V Membership dues: Members wishing to receive the monthly newsletter via postal mail will be assessed an additional fee to cover postage. Members receiving the newsletter via e-mail or from the website will not be assessed a fee.
- Add Section 4 for Article V Membership dues: The Board of Directors will review the membership dues rate at least biennially and propose modifications for vote of the membership as needed.



Renew your guild membership!

2010 – 2011 Empire Quilters Guild Membership Renewal

1. Dues for Guild Meeting Season Sep 2010 – Jun 2011: \$55.00 (all ages)

2. Contribution: Additional tax-deductible contribution (optional): _____

3. Newsletter: Select *one* method to receive your newsletter:

Email to email address: _____

First Class Mail: **\$5.00 additional annual fee to cover mailing costs**

4. Contact Information (please print):

Name: _____ Telephone: _____

Address: _____ Cell: _____

_____ Email: _____

City, ST, Zip: _____ Birthday: _____

5. Submit Form:

Bring completed form to a meeting,
or mail to: **Empire Quilters, Inc.**
Old Chelsea Station
P.O. Box 1293
New York, NY 10113

- ▶ Enclose a check for your annual dues, payable to: *Empire Quilters*, or bring cash to a meeting (no credit cards accepted).
- ▶ Please pick up your membership card at the next guild meeting.
- ▶ *Memberships are not acknowledged by mail*. If you want to have your membership card mailed to you, **please enclose a self-addressed, stamped envelope**.
- ▶ For more information see: www.EmpireQuilters.net

Membership Dues: \$ **\$55.00**

Contribution: \$ _____
(Optional)

1st Class Mail Fee: \$ _____
(n.a. for email)

Total Enclosed: \$ _____

Member News

CONGRATULATIONS TO OUR MEMBERS!!

Sue Clayton has quilt published in *Quilting Arts*

Hearty congratulations to Sue Clayton on the publication of her quilt *Tortoise* in the April/May issue of *Quilting Arts* magazine! Sue made the quilt as part of a magazine's Reader's Challenge to *Let Out Your Inner Animal*.

Karen Griska's quilt pattern published in *Quiltmaker*

Karen Griska has a quilt pattern published in the May/June issue of *Quiltmaker* magazine. Guild members may remember the very popular September 2009 Block of the Month called *Candy Stick*. The block's popularity has spread way beyond the NYC Metropolitan Area and now appears in this national magazine with a new name: *Asterisk**.

Award Winners at Long Island Quilters' Society Show

Alice Palmer received a first place ribbon for her quilt *Appliqué in a Day* and also a first place ribbon for her group quilt *Rose Sampler Supreme*.

Joyce M. Fischer received a second place for hand quilting on her *Forever Double Wedding Ring* quilt and a second place for a miniature quilt as well.

Arlaine Furcht displayed *Kaleidoscope Stars*, a beautiful, sparkling piece! Arlaine also received Honorable Mention award for another one of her quilts.

Susan Louis received a third prize for *Tropicana* and a merit ribbon for *Queen Molly's Passionate Pineapples*.

Susan Louis Accepted at AQS Lancaster Show

Susan Louis had the honor of hanging two quilts in the recent A.Q.S. Show in Lancaster! Those of you lucky enough to attend that show may have seen her quilts: *Paul Klee Meets Marc Chagall* and *Illuminations*. Both of these quilts appeared in our guild's 2009 Urban Inspirations quilt show.

LOCAL SHOW INFORMATION

8th Annual Quilters' Quest Shop Hop

May 13-16, 2010

In and around Albany, New York

www.quiltersquest.info

Stars of the Valley Quilt Show presented by Warwick Valley Quilters Guild

May 15-16, 2010

Sanfordville Elementary School, 144 Sanfordville Rd, Warwick, New York

www.wvqg.com

Anita Grossman Solomon Talk & Book Signing

May 15, 2010, 3:30pm - Registration REQUIRED!

The City Quilter, 133 W. 25th Street, NYC

www.cityquilter.com

Innovative Beads and Fiber Arts Expo

May 21-23, 2010

The Manhattan Center, 311 West 34th St, NYC

www.innovativebeadsexpo.com

Quilts in the Valley presented by Wiltwyck Quilters Guild

June 5-6, 2010

Ulster Community College, Stone Ridge, New York

www.wiltwyckquilters.org

Inspired ACTS

discovery UNleashed

www.inspiredacts.com

2430 Fifth Avenue

Between 141-142 Streets

Some of our classes:

- Dyeing: Cottons, Indigo, Batik, Shibori, Velvet, Silk
- Mixed Media: collage quilts, fiber books, ATCs and postcards, photo transfer, stamping, foiling Tyvek/Lutradur, paints
- Machine felting
- Accessories & Wearables for your sewing room, home, and yourself!
- Scrappin' Happy: Use those fabric scraps for a special project
- Silk screening: Traditional & Thermofax
- Tabula Rasa: make your own fabric!
- Finishing Techniques: blocking, binding, mitering
- Independent Study: choose a one-on one class!
- Monthly dyeing and mixed media sessions

All at affordable rates in a large, sunlit studio. Visit inspiredacts.com for class descriptions and current schedule.

Sew Time Sewing Centers makes Quilting Fun!

Pfaff Creative Sewing Centers

#1 in CUSTOMER SUPPORT!

EXPERT REPAIRS AND FREE ESTIMATES FOR ALL BRANDS!

EXCITING QUILTING CLASSES & BLOCK OF THE MONTH!
SEE OUR NEW FALL SCHEDULE AT SEWTIME.COM

#1 QUILTER'S CHOICE PFAFF IDT DUAL FEED
(zero fabric slippage)

SEE OUR WALL TO WALL QUILT FABRIC and FAT QUARTERS!



**NOTIONS, BOOKS,
PATTERNS, SUPPLIES,
SCISSOR AND PINKING
SHEAR SHARPENING
and MUCH MUCH MORE!**

Coupon Savings just for our Empire Quilt Guild Members!

Buy two yards of fabric and get one Free

(one per person please)

Buy two spools of thread and get one free

(one per person please)

25% off any quilting supply

(one per person please)

Buy two fat quarters and get one Free

(one per person please)

\$1.99 Any Size Scissor Sharpening

78-35 Springfield Blvd. Bayside, NY
QUEENS 718-776-1900

Sewtime.com

27-97 Middle Country Rd. Lake Grove, NY
LONG ISLAND 631-737-3944



For All Your Quilting Needs

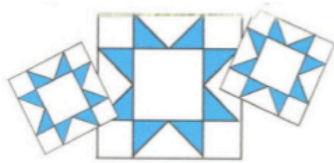
**Bernina Machines, Feet,
Accessories, Software**

133 West 25th Street
www.cityquilter.com
212-807-0390

Tuesday - Friday, 11 to 7
Saturday, 10 to 6
Sunday, 11 to 5

The City Quilter's Summer

- More than 57 different classes
- Free talks & volunteer activities
- Next fabric in our "City Collection" arrives



STOVER QUALITY QUILTING

All over Patterns, In the Ditch,
Marked and Stamped Patterns, plus Combinations

All hand guided

Backings and Battings also available

For free brochure, price list and information,
please call 1-800-521-4171 or 573-377-2303

Or write to:
Stover Quality Quilting
606 North Ash, Stover, MO 65078

e-mail: stoverqualityquilting@yahoo.com
website: www.stoverquilting.com

CELEBRATING over 60 years of Custom Machine Quilting

Harvey's
Sew Right Sewing Machines



There's a reason why we're the
Most Recommended
Sewing Machine Dealer in New York

The Best Repairs < The Best Selection
The Most Knowledgeable Staff
And integrity and trust built up
over the last 37 years
But talk is cheap....
Just ask your quilting friends about us

223-20 Union Tpke
Bayside, Queens, NY 11364
718-468-5858 www.sewright.com
Always 10% off repairs for guild members



Cat's Eye Quilt Studio

Longarm Quilting Services

We use a 14-foot-wide Gammill quilting machine loaded with Statler Stitcher, a computerized stitching function, and quilt all-over stitching as well as free-hand custom quilting.

We offer a 10% discount on quilting services to all members of Empire Quilters.

Backings and battings are available.

202 Pigeon Creek Road
Pottstown, PA 19465

www.catseyequiltstudio.com



FABRIC SEWING STUDIO
LONG ARM QUILTING
CUSTOM COMMISSIONS



103 Danbury Rd. Ridgefield, CT
203-431-0023
www.theQuiltersAlley.com

10% discount with guild card or nametag

Reminders!

* **Items to be Voted on at May Meeting**

Please be prepared to vote on the following items:

1. Bylaws changes, See page 6.
2. Board Nominations: Beth Pile, 2nd VP; Denise Walsh-Horowitz, Secretary; Gail Lefton, Chair of the Welcoming Committee.
3. Budget for 2011 Show, posted on our website.

* **June Newsletter Deadline**

Submit your articles for the June newsletter by Wednesday, May 12, 2010. Late submissions will not be accepted. Please send articles to lauren.dieterich@gmail.com.

* **June Workshop**

Contact Mary Butler to register for the workshop with Judith Larzelere. See page 2.

* **June Members' Flea Market**

Spaces are filled, but you can add your name to a waitlist. See page 4 for more details.

Calendar

June 12, 2010

Judith Larzelere

Happy Summer!

EXECUTIVE BOARD

President: Paula Kenney

212-982-8043 - pdkenney44@aol.com

First VP: Alice Brody

212-865-0163 - alicebrody@aol.com

Second VP: Lauren Dieterich

212-674-6174 - lauren.dieterich@gmail.com

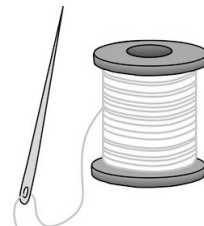
Treasurer: Anna Krassy

212-242-3253 - quilterme@gmail.com

Secretary: Gail Lefton

718-762-5499 - glefton@idesco.com

Empire Quilters
Old Chelsea Station
PO Box 1293
New York, NY 10113



FIRST CLASS MAIL - DATED MATERIAL - PLEASE DELIVER IMMEDIATELY