
EMPIRE NEWSLETTER

November 2009

President's Letter

This month, the plan Lee Ebs brought to the membership many months ago is finally realized. Members pitched in and amazingly we have a significant number of quilts to give to the Veterans Project. Members of the facility will visit our Guild this month to receive the quilts. Please join me in making our visitors welcome. I urge those of you who didn't participate to make a quilt for this worthy cause. The giving doesn't have to stop now, as the facility has many Veterans who will not receive a quilt.

In keeping with the spirit of giving, Janet Randolph has donated a Featherweight Sewing machine to be raffled off at our December meeting. I encourage those of you who will not be attending the December Meeting to look for Kitty Squire as she will be selling advance tickets for the sewing machine. You can find Kitty at the membership table.

Several years ago, we surveyed the members about what they wanted to do at meetings. Focus groups were a key priority. We now have very successful focus groups and a sewing club.

Speakers and workshops was also were also high in priority. We have many exciting workshops lined up for the next several months — all led by nationally known experts — but we need you to reserve your space in advance. In January, multi-award winning quilt maker Sharon Schamber will be giving two day-long workshops: one on machine appliqué and one on her special curved piecing technique. Due to the high demand for her teaching, Sharon requires that we guarantee minimal attendance by our November guild meeting, or we will need to cancel those January workshops. Sharon doesn't get to this area very often, so if you want to take one (or both!) of these workshops, contact Mary Butler.

Check the website for the complete listing of upcoming workshops, and plan to take advantage of these fun days spent learning a new skill from an expert artist and teacher. They are all well worth the time and admission fee!

I wish all of you a Happy Thanksgiving. --Paula Kenney

MEMBERSHIP DIRECTORY

The membership directory will be emailed to those of you who receive your newsletter via email. There will also be hard copies available at the November and December meetings at the membership table. If you need it mailed to you, please send a self-addressed stamped envelope to: Membership, Empire Quilters, P.O. Box 1293, Old Chelsea Station, New York, NY 10113.

HISTORIAN/ARCHIVIST NEEDS YOUR MEMORIES!

Help write the Empire Quilters' History by writing down when and why you joined Empire Quilters, favorite times in the guild, workshops you took, quilt shows — anything interesting you can remember. Think of this as the Empire Written History Crazy Quilt. I need your material, any kind, any shape, embellished as much as you can. Bring those items to a guild meeting, or email them to annamfoss@earthlink.net.



MEETING INFO

SUNDAY,
NOVEMBER 8, 2009

TIME:

10:30am: Focus Groups
11am - 12pm: Board Meeting
1pm - 5pm: General Meeting

LOCATION:

FIT, David Dubinsky Center
Building A, 27th St. & 8th Ave.

SPEAKER:

Sherry Shine, My Quilts - My Art

VENDOR:

Members' Flea Market

QUILTER of the MONTH:

None

FOCUS GROUPS:

Redwork, 10:30am
Elm Creek Sampler Club, 12pm

BOM:

Atomic Wedgie

GUEST FEES:

\$10: Regular
\$5: Student/Senior

November Meeting

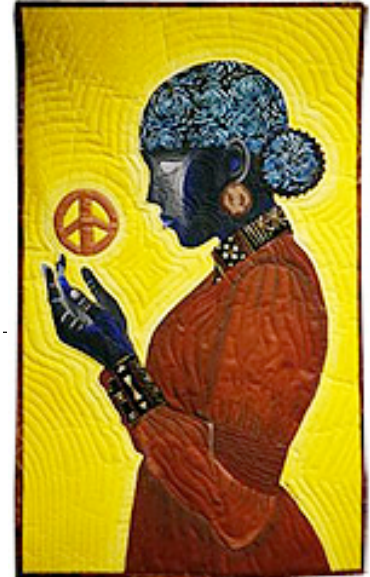
Featuring Program with Sherry Shine

PROGRAM

We will welcome internationally known quilt artist Sherry Shine to our November guild meeting. Sherry was an artist from the time she could hold a crayon. She was encouraged to develop her talent and one day she encountered quilt art. As Sherry reports: her "creativity and curiosity were ignited and her passion for art quilts was formed."

Sherry has a special love of portraits and the study of the face. Her quilts are stunning one-of-a-kind pieces, and her gifts of drawing, painting, and eye for color are evident in each quilt.

For more information about Sherry and her work, please visit her website: www.artbysshine.com.



VENDOR - MEMBER FLEA MARKET

Mark your calendars and come one come all! The next Members' Flea Market will take place at the November guild meeting. We have ten members who will be selling items. Please bring cash and checks to support them. This will be your only time this year to get these goodies. Remember, one person's junk is another person's treasure!

Sellers may set up starting at 10 am. Selling begins as soon as sellers are ready. Sales must stop during the meeting, but will resume after (usually around 3:30 or 4 pm).

This year we are adding as a bonus--a Guild White Elephant Table. All proceeds from the White Elephant table will go to Empire Quilters. Please bring all your white elephants to donate to support the guild. If you have any questions on what to donate, contact Anna Foss: annamfoss@earthlink.net

FOCUS GROUPS

Redwork

10:30 am - 11:30 am

Group Leader: Jennifer Bigelow
jmbigelow54@yahoo.com or 203-323-5138

The term 'redwork' comes from the red cotton thread, usually embroidery floss, that is used to create embroidered pieces that are used for many purposes, including quilting, pillowcases, table linens, or clothing for example. In this group we will briefly review the history of redwork, then make a small piece. We will learn about ways to transfer patterns to fabric, talk about what threads to use, working with other colors, and various uses for your embroidery. After transferring a pattern, we'll work on a small piece to learn and practice the basic stitches used in redwork. Finally, we'll discuss briefly ways to finish your piece. Jennifer will provide an information sheet on the subject with several book and web references.

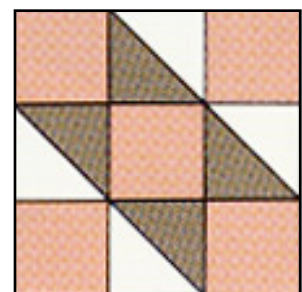
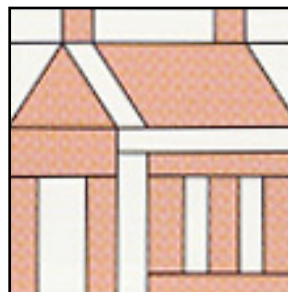
Supply List: Red or other color embroidery floss (Jennifer will bring some, but you may want to have what you'll continue with), embroidery needles, scissors, embroidery hoop (if you use one), sharp pencil, portable light (optional - bring an extension cord).

Elm Creek Sampler Club

12 noon - 1 pm

Group Leader: Helen Beall and Lisa Kehrle
htbeall@yahoo.com or 516-365-9257

How wonderful to see the many different versions of traditional designs. Just imagine all these finished quilts hanging side by side! This month we are making the Schoolhouse and/or Contrary Wife. In December we'll be making the Lemoyne Star, using the traditional diamonds or the optional split diamonds. Members are encouraged to bring in all their blocks, successfully done or otherwise. Remember we are all there for each other.



BLOCK OF THE MONTH

"Atomic Wedgie" - November BOM

The November block is made from rows of free-hand wedge shapes. The rows are 6 inches tall, and any length you like. Color recipe: Choose African style fabrics, or fabrics that are compatible with them. Two fat quarters will be plenty to make an Atomic Wedgie block. You might want to fussy-cut some interesting motifs to arrange in any direction.

For details, visit: www.empirebom.blogspot.com.

--Karen Griska, Helen Beall, Lisa Belle, Shirley Clark, Lisa Kebrle, Nick Alves



SHARE TABLE

Please note there will not be a share table in November or December.

We would like to thank all the members who participate in the Share Table, both those who donate and those who buy. Your support makes this aspect of the meeting worthwhile. We are especially grateful to those who pay more than asked because they say, "It's for the Guild." It would be appreciated if the donated fabric is checked/cleaned before donating. A few donations had unusual attachments that were not very nice to behold. *-Anna Krassy & Veronique Millex*

LIBRARY

There are many new books for members to borrow in November, including Nancy Eha's "Bead Creative Art Quilts;" Robbi Joy Elkow's "Goddess of the Last Minute," a series of funny essays that will keep you giggling. (the book was donated by Robbi Joy's publishing company); "Free and Eazy Circles" by Jan Mullen and two great Hawaiian quilt books. The most current list of books is on our website, or the list is available at the members' table.

Our annual book sale brought \$245 to the guild's coffers. Last year, the sale brought in over \$300. But, in the past we (Tina Barth, Susan Stauber, my friend Pat Henry and I) have hauled suitcases to FIT and then back to Tina's house when many books did not sell. This year I chose to have only two suitcases full of books to sell and we had only six books that were not sold. Maybe in the future we will have several big hefty male quilters who can run the library and carry giant suitcases full of books to put on sale. But for now, it is what it is.

Remember to return your books! Books borrowed in September were due in October -- the late fine is \$1.00 a month.

Thanks to Debby Chen and Sandra Samaniego, always there to help with the books and magazines at our meetings. And as always thanks for donations from our members: Gloria Bletter, Denise Bradley, Sister Cynthia Cunningham, Sara Niego and Diane Paul. *-Sylvia Hughes*

CHARITY

At the end of the October meeting someone (s) walked off with all stuff from the Charity table, including the list of who made donations and who took fabric to make holiday stockings. Jennifer Bigelow, Pam Wexler and Denise Walsh ask for that person to contact us so we know where everything went. We'd like to thank everyone who donated quilts and fabric at the October meeting.

BUS TRIP INFORMATION

The retreat is tentatively being planned for January 29-31, 2010. Please contact Aleeda if you have interest in participating so she can plan accordingly. *-Aleeda Crawley, acquiltasy@yahoo.com, or 973-313-0844*

TREASURER'S REPORT

Due to space limitations, the Treasurer's report is condensed. A complete version is on the website, or you can contact Anna Krassy at quilterme@gmail.com or 212-242-3253 to have a copy mailed to you.

| Guild | Month | YTD Total |
|-------------------|--------------|--------------|
| Beginning Balance | \$ 49,589.42 | \$ 53,753.91 |
| Income | \$ 4,395.05 | \$15,458.50 |
| Expenses | \$ 3,567.73 | \$ 18,795.67 |
| Ending Balance | \$ 50,416.74 | \$ 50,416.74 |

November Workshops

SATURDAY, November 7, 2009, 10:00 am – 5:00 pm

Location: 343 8th Avenue, at 27th Street

Cost: Donation of \$25-50 to support International Quilt Study Center & Museum. Give what you can!

Sign up: Contact Mary Butler at citymary@aol.com or 212-662-7771

Part of Empire Quilters' mission is to preserve and promote the tradition, culture and history of quiltmaking. One of our efforts toward this goal includes supporting the activities of the International Quilt Study Center and Museum (IQSC) in Lincoln, Nebraska. The Center houses quilts from many countries and centuries, and it offers a unique academic program that attracts scholars worldwide. All funds raised in these workshops will go to the IQSC.

These workshops are being given by two of our guild's professional members. This is a great opportunity to learn from these popular and talented teachers — and at the same time help further the art of quilting worldwide!

The supply lists are available on the website, or by contacting Mary.

FUNKY LOG CABINS

Instructor: Judy Doenias

This is one of the easiest and coolest log cabin variations. It is also a fabricaholic's dream. Bring strips from as many fabrics as you wish to cut. You will swap with others for as much variety as possible. The more fabric, the more wonderful and funky. The quilt size is entirely up to you. The more log cabins you create, the larger it will grow.

This is not a hand sewing class but if your machine sewing skills are limited, you will still do fine. Wonkiness is encouraged!



STRING QUILTING

Instructor: Diane Rode Schneck

For fabric lovers and scrap collectors - if you save every little piece of fabric and always wondered why, this is the class for you! The basic technique is incredibly simple, even for beginners, and the results are always stunning. Whatever your quilting style, you will LOVE String Quilting. "Strings", those long, skinny leftovers or new yardage cut into strips of various widths, should be no thinner than 1" wide, and no wider than 4" - straight or irregular. Diane will show many examples of String Quilting and discuss ways you can use strings in your own work. Basic techniques will be discussed and demonstrated. Each student will begin their own collection of string blocks.



Member News

CONGRATULATIONS TO OUR MEMBERS!!

Clare O'Donohue publishes second novel

Clare O'Donohue's novel *Drunkards Path* is now available in bookstores everywhere. The second book in the *Someday Quilts Mystery Series* is a murder mystery set in a quilt shop. Like the first book in the series (*The Lovers Knot*, 2008) this book features main character Nell Fitzgerald.

Guild Members Quilts on Display at City Quilter Show

The latest quilt exhibit put on by The City Quilter at The Williams Club has works by several members of Empire Quilters. Our hearty congratulations to the following members for their part in making the show a great success:

Mary Cargill: *Morris Star*, Diane Collier: *Our Patchwork Heritage is a Strength*, Barbara Feinstein: *But I'm a Goddess*, Emily Klainberg: *Finished Before Barbara's*, Adina Klein: *Horst & Kaffe & Judy & Me*, Anna Krassy: *Blue Sky, Sunshine*, John Kubiniec: *Picnic*, Pamela Leonard Wexler: *Gold Rush and Jane's Christmas Tree*, Debra Levin: *Purple Jane*, Gardy Nadler: *Mending My Heart*, Helma Reid: *City Lights*, Joyce Robbins: *Escape Hatch*, Diane Rode Schneck: *Cornerstones I-Louisa*, Susan Sato: *Japanese Circles*, Teri Scduto: *Green Piece*, Didi Schiller: *Aerial Reconnaissance*, Betsy Vinegrad: *Starburst*, Ellen Yamaguchi: *New York City Lights*

DECEMBER MEETING FUNDRAISER - BAKE SALE!

For the Holiday meeting, we are going to concentrate on having fun and doing good! In addition to our usual charity efforts, we will be having a food/bake sale to raise money for Empire Quilters. Please bring your favorite goodies for all to enjoy. Please also bring the recipes—we are looking into making a cookbook as a future fundraiser.

FEATHERWEIGHT SEWING MACHINE FUND RAISER

Janet Randolph has fantastically donated a Featherweight machine for the Guild to use to make money. We will be selling tickets for it, both at the November and December meetings. It will be awarded in December. If you cannot make it to that meeting, you can get your ticket (s) from Kitty Squire at the Membership table in November or you can contact her directly at kesquilts33@msn.com. If you have ever coveted one of these wonderful machines, now is your chance! Thank you, Janet!

CHARITY - CAT QUILTS

Diane Rubenstein is heading up an effort to provide cat quilts for local animal shelters, and asks for your support in making some. Here are some hints for making cat quilts:

Finished cat quilt should measure 13-14" by 18-20" rectangle. Any type of batting will be fine. I find it easiest to run 2 rows of stitching across the short side and one across long side for quilting. If preferred 5 X's can be spaced or even hand tied (which is most laborious). A large rectangle can be folded over and only 3 sides would have to be sewn. Turn inside out leaving a wide opening - put in batting making sure to get into corners — finish up sewing the outside opening and tack or quilt as desired. If you only have smaller pieces of fabric to spare, a front and back can be done up too. They take only a few minutes each to make. PLEASE trim off all threads.

If batting is not available an old blanket or towel (washed of course) can be used. Thank you all for your help!

LOCAL SHOW INFORMATION

Made in New York: City Quilting

September 22-November 14, 2009
The Williams Club, New York, NY
www.cityquilter.com/exhibition2009.html

Fashion & Politics

July 7 - November 7, 2009
F.I.T. Museum, New York, NY
www.fitnyc.edu/museum

Harlem Sewn Up

June 20 - November 28, 2009
The Dwyer Cultural Center, 258 St. Nicholas Ave
(entrance on 123rd St.), New York City
www.dwyercc.org

The 10th Wave III: In Person

October 9 - November 28, 2009
Artifact Design Group, 66 Danbury Road (Rt. 7),
Wilton, Connecticut
www.browngrotta.com

Full-Spectrum

September 10 - December 5, 2009
Bingham University Art Museum, Fine Arts Bldg
www.artmuseum.binghamton.edu

Serizawa: Master of Japanese Textile Design

October 9, 2009 - January 31, 2010
Japan Society, 333 E. 47th St., New York City
www.japansociety.org

EXECUTIVE BOARD

President: Paula Kenney

212-982-8043 - pdkenney44@aol.com

First VP: Alice Brody

212-865-0163 - alicebrody@aol.com

Second VP: Lauren Dieterich

212-674-6174 - lauren.dieterich@gmail.com

Treasurer: Anna Krassy

212-242-3253 - quilterme@gmail.com

Secretary: Gail Lefton

718-762-5499 - glefton@idesco.com

OUR SYMPATHIES

We are extremely sad to report that NASA astronaut Fernando "Frank" Caldeiro passed away on October 3, 2009 after a long battle with cancer. Frank, 51, was the son of long time Empire Quilters member Carmen Caldeiro. Frank was the lead astronaut for many NASA projects, and at the time of his death was directing the NASA high-altitude atmospheric research program in Houston. He leaves behind a wife and two daughters.

Condolences may be sent to the Carmen at:
45-72 166th Street, Flushing, NY 11358-3233

Sew Time Sewing Centers makes Quilting Fun!

Pfaff Creative Sewing Centers

#1 in CUSTOMER SUPPORT!

EXPERT REPAIRS AND FREE ESTIMATES FOR ALL BRANDS!

EXCITING QUILTING CLASSES & BLOCK OF THE MONTH!
SEE OUR NEW FALL SCHEDULE AT SEWTIME.COM

#1 QUILTER'S CHOICE PFAFF IDT DUAL FEED
(zero fabric slippage)

SEE OUR WALL TO WALL QUILT FABRIC and FAT QUARTERS!



NOTIONS, BOOKS,
PATTERNS, SUPPLIES,
SCISSOR AND PINKING
SHEAR SHARPENING
and MUCH MUCH MORE!

Coupon Savings just for our Empire Quilt Guild Members!

| | | | | |
|--|---|---|---|------------------------------------|
| Buy two yards of fabric and get one Free <small>(one per person please)</small> | Buy two spools of thread and get one free <small>(one per person please)</small> | 25% off any quilting supply <small>(one per person please)</small> | Buy two fat quarters and get one Free <small>(one per person please)</small> | \$1.99 Any Size Scissor Sharpening |
|--|---|---|---|------------------------------------|

78-35 Springfield Blvd. Bayside, NY
QUEENS 718-776-1900

27-97 Middle Country Rd. Lake Grove, NY
LONG ISLAND 631-737-3944
Sewtime.com



Bernina Education Center
& Machine Sales

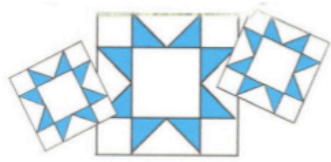
www.cityquilter.com

212-807-0390

Tuesday - Friday, 11 to 7
Saturday, 10 to 6
Sunday, 11 to 5

CQ's "New York Collection" expands: NYC Subway fabric has arrived in 3 colors





STOVER QUALITY QUILTING

All over Patterns, In the Ditch,
Marked and Stamped Patterns, plus Combinations

All hand guided

Backings and Battings also available

For free brochure, price list and information,
please call 1-800-521-4171 or 573-377-2303

Or write to:
Stover Quality Quilting
606 North Ash, Stover, MO 65078

e-mail: stoverqualityquilting@yahoo.com
website: www.stoverquilting.com

CELEBRATING over 60 years of Custom Machine Quilting

Harvey's

"Sew Right Sewing Machines"

Serving NY since 1973

Authorized Sales & Service on:

Husqvarna Viking • Bernina

Baby Lock • Janome

And NY's best repairs on all makes!

Now Open Sundays from 11:00-4:00

Empire Guild Members

11 lb Janome #3128 Only \$99



Perfect for kids or taking to classes

Sale for Nov. or while supplies last

223-20 Union Tpke. Bayside, Queens

718-468-5858

info@sewright.com

www.sewright.com



Contemporary Fabrics
for all your sewing projects

Classes
in our spacious studio

Long Arm Quilting Service
for professional finishing

Sewing Machines
for every skill level
and budget

10% off with
Empire ID

Husqvarna

VIKING

Kaffe Fassett, Amy Butler,
Art Gallery Fabrics, Daiwabo Taupes,
Lecien, Kokka

SHOP ONLINE SECURELY
WE'RE MORE THAN JUST QUILTING!

www.TheQuiltersAlley.com

422 Main St. | Ridgefield CT | 203.431.0023

Located on the Lower Level

Nancy Ellen Quilts

traditional hand quilting supplies



Discount On-line

Quilt Shop

Aurifil • YLI • Hobbs • Omnigrd • Gingher • Orvus & more

www.NancyEllenQuilts.com

nancy@nancyellenquilts.com

516.377.1731

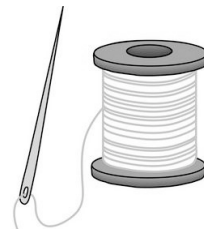
Reminders!

- * **December Newsletter Deadline** - Submit your articles for the December newsletter by Wednesday, November 11, 2009. Late submissions will not be accepted. Please send articles to lauren.dieterich@gmail.com.
- * **Sign up for January Workshops by November 8** - Sharon Schamber is teaching two different one-day workshops. Day One, Sunday January 10: Exotic Bloom and Day Two, Monday January 12: Flying Geese with Piece-lique Curved Piecing. If we do not have enough participants signed up by November 8, the workshop(s) will be cancelled.
- * **Memorabilia Not Available at November Meeting** - Due to the Members' Flea Market and our White Elephant Sale, there will not be any Guild Memorabilia available in November.
- * **Veterans Quilts will be Presented at November Meeting** - So far, 32 wonderful quilts are completely finished, labels and all. Several others are in various stages of completion. Hopefully some of you are also working on quilts or tops at your homes. Quiltathons at Lee Eb's home will continue every Monday and Saturday through Nov. 7. At the Nov. 8 meeting, we will present quilts to the director of the New Era Veterans Shelter. .

Calendar

- December 12, 2009**
Holiday Fundraiser/Party
Workshop: Anna Faustino
- January 9, 2010**
Sharon Schamber
- February 13, 2010**
Member Demonstrations
- March 13, 2010**
Charity Day
- April 10, 2010**
Betty Pillsbury
- May 8, 2010**
Trish Chambers
- June 12, 2010**
Judith Larzelere

Empire Quilters
Old Chelsea Station
PO Box 1293
New York, NY 10113



FIRST CLASS MAIL - DATED MATERIAL - PLEASE DELIVER IMMEDIATELY