

**Old Chelsea Station  
P.O. Box 1293  
New York, NY 10113  
WWW.EMPIREQUILTERS.NET**

**FIRST CLASS MAIL**

**DATED MATERIAL  
Please Deliver Immediately**

**NEXT MEETING: MAY 12, 2007  
11 AM TO 12 PM – BOARD MEETING  
1 PM TO 5 PM – GENERAL MEETING  
Fashion Institute of Technology (F.I.T.)  
David Dubinsky Center, 8<sup>th</sup> Floor  
West 27<sup>th</sup> Street & 8<sup>th</sup> Avenue, NYC  
GUEST FEE \$5.00**

**PROGRAM: “THE GOOD, BAD AND UGLY TRUNK SHOW”  
WITH LINDA POOLE PRIOLEAU  
VENDOR: COME QUILT WITH ME  
QUILTER OF THE MONTH: TERESA VEGA  
WORKSHOP: FUNKY LITTLE HOUSE (PAGE 2)**

**PROGRAM**

Linda Poole Prioleau pushes the limits of quilting. The results — which she calls Festive Fiber for Fun Folks are way fun. Linda reports that she enjoys quilts of all kinds, but has been drawn to contemporary quilts as a means of play and possibility. Her recent works feature multiple layers, free standing pieces and pop-up structures. She has recently incorporated hinges so that quilted panels can swing free and change the shape and dimension of the piece.

She has never been able sit still long enough to do just one thing repeatedly and has long

been plagued with the "what ifs" and the "why nots." Although this childlike curiosity sometimes gets her into mischief, it also provides endless hours of enjoyment. Her studio is her creative laboratory.

Linda has twice appeared on Simply Quilts with Alex Anderson. Her presentations were both fun and popular. She first participated in the show's Fortune Cookie Challenge and her return appearance centered on the creation of her Funky Little House. We are looking forward to Linda's time with Empire Quilters. She will share her quilts and wearables with us, and she'll share all the stories, too — the funniest are tied to the ugliest trial and error fiber art.

## MAY WORKSHOP

Linda will conduct a workshop prior to the meeting, where she'll show us how to create our own Funky Little House (or Fairy Cottage). See the Workshop info for details. For more information about Linda Prioleau visit her website: [www.matlyndesigns.com](http://www.matlyndesigns.com).

In addition to Linda Prioleau's presentation, we will hear details of the Dyckman Farmhouse Museum Quilt project. The guild will be re-creating a 1916 quilt for the museum. As you can see from this picture of one block of the old quilt, this valuable museum piece needs replacement. Empire Quilters will duplicate the quilt with reproduction fabrics and hand applique as the original was done. This is a very exciting project for the guild. Be sure to come hear all the details.



A focus group will be given by **Diane Rode Schneck** demonstrating the methods and techniques for this project, and kits will be available for members who want to participate. Please plan to attend the focus group if you want to participate in this project. This quilting project was approved by the membership at our September 2006 meeting.

The Dyckman farmhouse is located on Broadway at 204th Street in Upper Manhattan. The house dates from the late 1790's and was donated to the City of New York as a colonial museum in 1916. For more information about the Dyckman Farmhouse Museum you can visit their website:

[www.dyckmanfarmhouse.org](http://www.dyckmanfarmhouse.org).

### Fairy Cottage

**Date: Saturday, May 12, 2007**

**Time: 9:00 am – 12:00 pm. (Before the general meeting.)**

**Instructor: Linda Poole Prioleau**

[matlyndsgn@aol.com](mailto:matlyndsgn@aol.com)

[www.matlyndesigns.com](http://www.matlyndesigns.com)

**Location: Fashion Institute of Technology (F.I.T.), David Dubinsky Center, 8th Floor, 27th Street & 8th Avenue, New York City.**

**Cost: \$25.00**

Many of you may know Linda Poole Prioleau from her appearances on Simply Quilts with Alex Anderson. Linda will be demonstrating how to construct her Funky Little Houses. For more information about Linda, visit her website.

**SUPPLY LIST:** Funky Little House Pattern @ \$8.00. I will bring to class.

No sewing machine. The attendees can fuse all their pieces and do some hand stitching, then, sew like crazy at home. **Sewing supplies:** scissors, seam rippers, rotary cutter and mat, etc. **Selection of fat quarters** for house, backing, roof, lawn base, lawn base back. Cottons, batiks or silk, wool and corduroy.

Be creative! No grass fabric? Bring a wacky print that works fine for grass. Get out of the box!! 1 yard cotton batting. (1) 12" x 12" piece of ply wood from the hardware store, about 1/4" thick. Your favorite fabric glue. I use Sobo. **Selection of threads;** Cotton for basic sewing and decorative threads for embellishment and quilting (rayon, metallic, and polyester). 1 yard fusible web. An assortment of buttons, beads, yarn for embellishment. A good sense of humor and a **non-messy** snack to share!



## PRESIDENT'S MESSAGE

I can't begin to say how proud I feel about the 2007 Urban Inspirations Quilt show, nor how grateful I am for all the hard work done by so many members of this Guild to make it such a phenomenal success. I know many of us barely find time to sit still – but I sure had fun! It was wonderful to see so many people (over 2,100 people came to our show) having fun, enjoying the marvelous quilts we presented and delighting in shopping with our vendors who provided a delectable array of products. My special thanks go to Larry Gifford and the core show committee (Gail Lefton, Kitty Squire, Sandra Cain, Mary Butler and Judy Shapiro), who worked tirelessly for the last 2 years in planning the show. (I hope I didn't forget someone). In addition to the core committee, there were many others who chaired the many committees necessary to make this all work so smoothly. Thank you all.

**Things to note from our April Board meeting:** though you might think that after the Show we'd rest on our laurels, that wasn't the case. **The Board discussed a number of important topics at the April meeting and there are two in particular that I want to mention.**

First, we voted that we would like to have our next show in 2009, and hopefully establish a bi-annual schedule going forward. A number of people on the current Board volunteered to form a steering committee to start planning.

Second, as you'll see later in the newsletter, the Board discussed and voted to recommend an increase **in regular dues to \$45** to cover increasing costs of our monthly operations – particularly spurred on by an anticipated, significant rent increase beginning in September. **Dues for Senior Citizens will remain at the current rate of \$25.** Our bylaws require the general membership to vote for a dues increase.

As always, if you have any questions or remarks, please contact me, either by e-mail through the Guild's website, or by telephone.

I look forward to seeing you at the May meeting.

**Jennifer**

### **IMPORTANT: Two items to be voted on by Membership at May meeting**

The bylaws of Empire Quilters Inc. require the general membership to vote on certain proposals made by the Board. In May there are two items for the membership to affirm by majority vote:

1. An increase in the membership dues for regular members
2. A new slate of officers for September 2007 through June 2009

You are asked to affirm both items by majority positive vote at the May meeting.

**Rate Increase:** At the April Board meeting a recommendation was discussed, moved and approved by majority vote to raise the regular membership dues from \$35 to \$45 per year. Senior Citizen membership will be kept at \$25.

The rate increase is necessary at this time because our costs for our month-to-month operations have been increasing, and because we've been informed that the rent for the space at FIT is being nearly doubled starting in September. We have begun a search for other alternatives, both at FIT and other locations. But at this time we have not found other suitable accommodations at the rate we currently enjoy. Further, we have experienced increases in the costs associated with the programs we offer.

**Officers and Committee Chairs:** Several of the current Board of Directors and Committee Chairs for Empire Quilters have terms ending in June. The following people are proposed to fill the Officer and Chair positions (please note this

does not list all committee members, only the chair persons):

President:	Jennifer Bigelow (2 <sup>nd</sup> term)
1 <sup>st</sup> Vice President	Paula Kenney
2 <sup>nd</sup> Vice President	Lauren Dieterich
Treasurer:	Kitty Squires (2 <sup>nd</sup> term)
Secretary	Gail Lefton
Block of Month	Anna Krassy
Bus Trips	Aleeda Crawley
Bylaws	Jennifer Bigelow
Donations Coordinator	Diane Harris
Focus Groups	Anna Faustino
History/ Archives Kelley (co-chair)	Anna Foss & Dess
Library	Sylvia Hughes
MAQNET Coord Jennifer Bigelow (co-chair)	Anna Faustino &
Membership	Kitty Squire
Newsletter Advertising	Betty Chen
Newsletter Editing	Linda Kelly
Newsletter Mailing	Susan Louis
Nominating	- - not filled yet
NQA Coordinator	Beth Pile
Programs	Lee Ebs
Quilter of the Month	Debra Levin
Raffle (monthly)	Nancy Castel
Service & Pamela Leonard Wexler (co-chair)	Denise Walsh-Horowitz
Share Table	Veronique Milliez
Show & Tell Hoffman (co-chair)	Claire Leffel & Carole
Sunshine	Beth Pile
2009 Show	- - position to be filled
Ways & Means	Larry Gifford
Website	Cindy Russell
Welcoming	Beth Pile
Workshops	Mary Butler

There will be time allotted for discussion of these points at the business meeting in May, prior to taking a vote. In order to keep the meeting on track, the discussion time will be scheduled for 10 minutes. If you have any questions on these two items please contact

Jennifer Bigelow by e-mail through the Guild's website.


## QUILT-O PARTY APRIL 14TH

Nearly three dozen people took away prizes large and small at the April meeting. Quite a few members are now well supplied with rotary cutters, scissors, rulers of all kinds, storage, fancy threads, stencils, and fabric, stationary, (quilter's) postage stamps, and more. Kate Iscola and Frida Hoyett called QUILT-O! for the grand prize in the blackout game. Most prizes were purchased by the guild, nearly a dozen more were donated by members.

The program was made possible by the efforts of volunteers: Dess Kelley; Myrna Williams; Jane Broaddus; Joanne Downes; Wendi Higginbotham; Mindy Wheeler-Marks; Agneta Noe; Jesse Grant; Gloria Bletter; Rita Reid; Michael Greenberg; Jennifer Bigelow; Ulla-Britta McCarthy. Thank you and bravo for a job well done to all the volunteers. Apologies to anyone whose name I have accidentally omitted.


***Please make sure all QUILTO CARDS have been returned to the Program Chair.***

**Barbara Hull**



**BERNINA**  
AUTHORIZED DEALER

FABRIC  
CLASSES, SUPPLIES  
KITS



**THE QUILT SHOP**

5 PADANARAM RD.-RT. 37  
DANBURY, CT 06811  
WORTH THE TRIP

GINNY MURPHY  
TEL: 203-743-0543  
wamquilt@aol.com

**Empire members receive a 10% discount.**

THE CITY QUILTER®



For All Your Quilting Needs

133 West 25th Street  
212-807-0390  
www.cityquilter.com

Tuesday - Friday, 11 to 7  
Saturday, 10 to 6  
Sunday, 11 to 5

Guild Members  
receive a 10% discount

## Our Vital Statistics

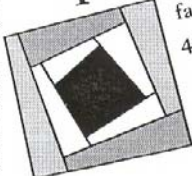
48 Summer Classes

2,500 Bolts

5,500 Products in the Shop

550 Items Online  
& Growing Weekly

the quilt cottage  
fabrics • yarn • gifts  
414 mamaroneck avenue  
mamaroneck, ny 10543  
(914) 777-1333



distinctive collection of cotton fabrics

colorful, funky, yarns

unique assortment of ribbons, swiss laces & trims

sewing machine repairs  
quilt finishing & restoration


one block south of Metro North (mamaroneck station)

special orders

fabric buyers discount card

hours:  
monday - saturday  
10-6  
www.quiltcottage.net

directions:  
Hutchinson River Parkway  
Exit 23S or I-95 NYS Thruway  
Exit 18A (Mamaroneck Avenue)  
to Mamaroneck business district.  
1/4 mile from railroad station  
on right-hand side.





## BIG APPLE QUILT FOR EMPIRE'S 2009 RAFFLE

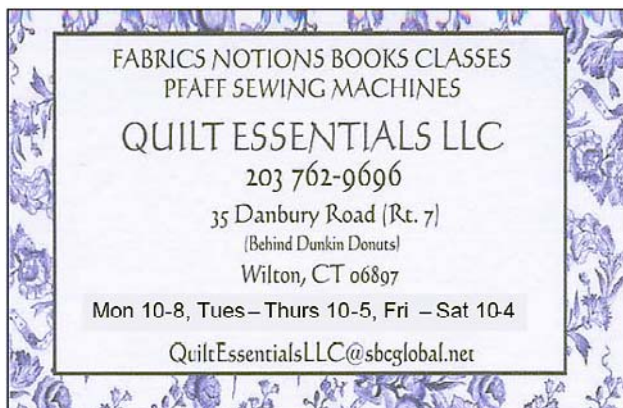
Okay, quilters, the holidays are long past, our quiltathon is done, and our show is also just a memory. So now it's time to get busy on our next raffle quilt. Some of you have already turned in blocks, and those will all be on display at our May meeting. But we need lots more, and we want everybody to participate. The theme is apples. Any kind, any color, any technique so the quilt will be as diverse and interesting as our guild. Cotton, please. Squares or rectangles, with sides any combination of 4 1/2, 6 1/2, or 8 1/2 inches. **The deadline is our June meeting.** Have fun!

Lee Ebs

## SERVICE COMMITTEE

The Service Committee would like to thank everyone who brought back their completed charity quilts and who made quilts this month. Rita Reid - 1 quilt, Shirley Levine - 1 quilt, Rhona Triggs - 6 quilts, Mary Ferry - 2 quilts, Pam Leonard Wexler - 3 quilts, Lorna Spence-Ellis - 1 quilt, Ann Strauss - 1 quilt, Freida Hoyett - 3 quilts, Paula Cruz - 3 quilts, Ulla McCarthy - 1 quilt, Sandy Seyken - 3 quilts and 12 baby hats. Thank you for the donations of fabric and to our members who always deliver quilts to the needy.

Denise and Marion



Empire members receive a 10% discount.

## LIBRARY

Thanks to Catherine Bancroft, Regina Nordquist and Pearl Chow three members who will be leaving their positions at the Empire library. We appreciate the work they have done. I especially want to thank Catherine who was the librarian until June 2005 but stayed on to help me while I learned the ropes and Tina Barth who continues to let us keep the library in her house.

Tina and I will continue working in the library with new member Anne Strauss. BUT in order for the library to continue to run smoothly, we are asking for several new volunteers. Please call me if you would like to join us, **Sylvia Hughes 212-665-5036.**

In April we received book and magazine donations from Bundi Ruegger, new member Cheryl Kulakoff and Sara Niego. With a special thanks to Diane Harris our Donations Coordinator for bringing us lots of books that were donated by Diane Rode Schneck.

Sylvia Hughes

## RAFFLE COMMITTEE

\$174.00 was collected for the 50/50 Raffle at our April meeting. The lucky winner walked away \$87.00 richer (and probably ran right over to the fabric store!). We want to thank Betty Chen and Veronique Milliez for their contributions to May's raffle and especially thank Millicent Lana for the beautiful hand knitted sweater vest and baby jacket. Look forward to these and other great prizes in our next raffle!

Pat and Anita

**QUILT ESSENTIALS IS TEMPORARALY  
CLOSED DUE TO FLOOD DAMAGE.**

We are happy to introduce  
our pretty little fabric shop...

# *purl* patchwork

a new source for all your quilting needs!

We feature cheerful vintage prints,  
delicate historical reproduction fabrics,  
beautiful contemporary designs,  
and a rainbow of solid colors.

Purl Patchwork is at 147 Sullivan Street,  
in New York City, between Prince and Houston.

Call us at 212-420-8798

And while you're in the area,  
don't forget to visit our knitting store, Purl,  
just down the street at 137 Sullivan Street.

Visit us online at

*purl*soho.com

#### STORE HOURS

MONDAY - FRIDAY 12-7    SATURDAY + SUNDAY 12-6

## JUNE BLOCK OF THE MONTH

### Patriotic Star – 8 ½ inch unfinished (8 inches finished)

Fabric requirement – red, white and blue

- 1 – 2 ½ inch square of blue for the center square
- 4 – 1 ½ inch squares of white for the corners of the center star
- 4 – 2 ½ X 1 ½ inch of white rectangles for the flying geese
- 8 – 1 ½ inch blue squares for the blue star points
- 4 – 2 ½ inch red squares for the corners of the large star
- 4 – 4 ½ X 2 ½ red rectangles for the flying geese
- 8 – 2 ½ inch white squares for the white star points

To all four of the white rectangles, sew a 1 ½ inch blue square at each corner to make the flying geese. Trim the seams under the points to a ¼ inch. On both ends of two flying geese, sew one of the 1 ½ inch white squares.

Sew one flying geese piece (the one with the corner square at both ends) to opposite sides of the 2 ½ inch blue center square. Iron toward the center.

Sew the first piece above to the second piece above forming a 4 ½ blue star with a white background.

To all four of the red rectangles, sew a 2 ½ inch white square at each corner to make the flying geese. Trim the seams under the points to a ¼ inch. On both ends of two flying geese, sew one of the 2 ½ inch red squares.

Sew one flying geese piece (the one without the corner square at both ends) to opposite sides of the 4 ½ inch blue star center square. Iron toward the center.

Sew the red and white geese piece (the one with the corner square at both ends) to the top and bottom completing the white star with a red background.

You should now have a blue star inside of a white star with an outer red background.



## BUS TRIP

**NJ State Guild Quilt Convention – New Jersey Convention and Expo Center, Edison, N.J.**

**Saturday, June 9, 2007**

**Depart: 8:30 a.m. Return: 4 p.m. (Manhattan)**

**NOTE:** Cost will be \$41 if we sign up a minimum of 30 people. Price includes transportation, tip, tolls, AND admission to the show. It is important that you make your full payment by our **MAY 12 MEETING**. Make a check payable to EMPIRE QUILTERS GUILD, and note that it is payment for NJQC.

500+ quilts and wearables as well as 50+ vendors. For more info on this show, go to [www.njqilts.org](http://www.njqilts.org).

For more information about this trip, contact trip coordinator Aleeda Crawley at [acrawley@publicitas.com](mailto:acrawley@publicitas.com).



## FOCUS GROUPS

All focus groups will be held at Fashion Institute of Technology (F.I.T.), David Dubinsky Center, 8<sup>th</sup> floor.

### “Attic Windows”

**Date: May 12, 2207**

**Time: 10 - 11:30 a.m.**

**Group Leader: Janet Randolph**

Review of Attic Windows quilt and sharing member's work.

This is part two of a two part focus group.

### Weather in Landscapes

**Date: May 12, 2007**

**Time: 11:00 – 12:00 a.m.**

**Group Leader: June Calender**

Come get some fabulous tips on how to show weather effects in your landscapes. Guild member June Calender will speak and show examples to help you in your own work. Bring a notebook and pen/pencil to take notes. You are also welcome to bring a camera to take some visual notes.

### Needle Turn Appliqué

**Date: May 12, 2007**

**Time: After the general meeting (approx 3:30 – 5:00 pm)**

**Group Leader: Diane Rode Schneck**

**Open To: This focus group is open to individuals interested in participating in the Dyckman Farmhouse Museum quilt reproduction project.**

Kits for the quilt will be distributed, and sewing methods and techniques will be discussed and demonstrated. If you wish to participate in the project, please plan to attend this focus group.

Are you tired of receiving your newsletter late? If so, there is an easy way to resolve this-have it delivered by e-mail! You will receive it as soon as it is available and have the scoop on all of Empire’s news early.

## TREASURER’S REPORT

Treasurer's Report  
3/13-4/15

Income as of 4/15/07	Month	YTD
Bus Trips		\$2,268.00
Fundraiser		\$929.50
Interest on Money		
Market	\$19.06	\$176.13
Library Income		\$333.27
Member Boutique		
Membership/Guests	\$540.00	\$835.00
Monthly Raffles	\$87.00	\$1,081.00
Newsletter Advertising		\$3,713.50
Share Table	\$130.75	\$655.75
Vendor Sales		\$561.90
Ways and Means		
(Bags, Lanyards, Pins)	\$49.00	\$1,220.00
Workshops	\$425.00	\$2,365.00
Deferred Income		\$3,605.00
<b>Total Income</b>	<b>\$1,250.81</b>	<b>\$17,744.05</b>

Expenses as of 4/15/07	Month	
Donation to Katrina-Habitat		\$200.00
Insurance		\$1,122.00
Library Expense		\$37.59
Miscellaneous		\$367.57
Newsletter Expense		\$2,515.69
Newsletter Mailing		\$814.20
Printing and Reproduction		\$63.05
Postage		\$16.92
Post Office Box		\$50.00
Quilt Rack		\$149.00
Rent		\$5,000.00
Speaker		\$1,614.05
Speaker Expenses		\$643.32
Stationery	\$204.67	\$204.67
Storage Facility	\$162.00	\$162.00
Trips	\$270.00	\$2,487.20
Ways and Means		
(Pins, Lanyards, Bags)		\$2,420.25
Website		\$131.65
Welcoming Committee		\$45.44
Workshop Expense		\$775.71
Workshop Teacher Fees		\$1,150.00
<b>Total Expenses</b>	<b>\$636.67</b>	<b>\$19,970.31</b>

Current Bank Balance as of 4/15/07  
 Quilt Show Checking \$26,321.12  
 Guild Checking \$20,991.28  
 \$47,312.40

Please email **Kitty Squire** at: [Kesquilts33@msn.com](mailto:Kesquilts33@msn.com) with your name and e-mail address to enroll.

## 2007 SHOW REPORT

### 2007 Quilt Show

Balance 3/14/07	\$18,245.56	
<b>Income</b>	<b>Month</b>	<b>YTD</b>
Vendor Deposits	\$912.60	\$6,987.60
Admissions	\$15,223.50	\$15,223.50
Boutique	\$3,173.75	\$3,173.75
Bus Trips	\$518.00	\$868.00
Raffle QuiltSales	\$2,484.00	\$8,097.00
Sewing Machine Rfl	\$908.00	\$908.00
Other Raffles	\$879.00	\$879.00
Quilt Submission		\$2,180.00
CD	\$12.95	\$12.95
Appraisals	\$640.00	\$640.00
Program Ad		\$3,572.00
<b>Totals</b>	<b>\$24,751.80</b>	<b>\$42,541.80</b>
<b>Expenses</b>	<b>Month</b>	
Appraisals	\$530.00	\$530.00
Boutique Expenses	\$64.96	\$111.96
Boutique Commsns	\$1,865.24	\$1,865.24
Bus Trip Refund	\$63.00	\$63.00
Hanging Expenses	\$929.72	\$3,457.07
Cash for Show	\$1,000.00	\$1,000.00
Cash Boxes		\$151.64
Delivery	\$250.00	\$775.00
Entry Wristbands		\$323.56
FIT-A/V	\$935.00	\$935.00
FIT-Lighting	\$1,705.00	\$1,705.00
Judging Expenses	\$66.63	\$458.72
Office Supplies	\$145.27	\$454.96
Pole Rental	\$500.00	\$500.00
Postage	\$78.00	\$560.51
Program Printing	\$4,246.19	\$4,246.19
Promo Printing	\$327.27	\$2,028.39
Raffle		
Drum/Fishbowls	\$307.00	\$307.00
Raffle Quilt		
Insurance		\$42.00
Raffle Quilt Fabric		\$146.71
Raffle Tkt Printing		\$478.01
Ribbons		\$7.13
Signage/Nametags	\$644.16	\$644.16
Space Rental		\$8,987.00
Speakers	\$1,550.00	\$1,550.00
Speaker Expenses	\$184.16	\$184.16
Table Rental	\$222.50	\$222.50
Tips	\$350.00	\$350.00
Totes for Storage	\$220.60	\$220.60
Truck Rental	\$279.04	\$279.04
Vendor Refund	\$212.50	\$1,237.50
White Gloves		\$116.98
<b>Totals</b>	<b>\$16,676.24</b>	<b>\$33,939.03</b>
Balance as of		
4/15/2007	\$26,321.12	

### SO SORRY!

In our show program, we listed the wrong address for DJEMA IMPORTS. They are located at 6E. 125th Street, New York, NY 10035. Their phone number is 212 289 3842.

## QUILTER OF THE MONTH

Teresa Vega was born and raised in Brockton, Massachusetts. After attending college in Brunswick, ME, she moved to New York City to work on her doctorate in anthropology. After many years of studying and teaching anthropology, she decided to change careers.

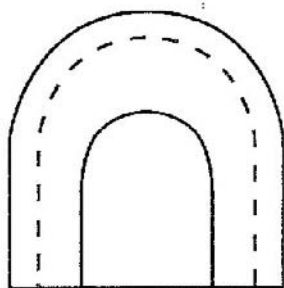
Teresa comes from a family of women who sewed. She started quilting in 1996. Her first quilt was based on an original design. Not long after she made her first quilt, Teresa had the opportunity to meet some members of Quilters of Color Network of New York at the American Folk Art Museum and joined the guild as a member. In 2004, she became President of QCNNY.

The impetus for her art quilts comes from her identity as an African- American and Puerto Rican woman. She is particularly inspired by the *Orishas* of Yoruba-based religions ---i.e., Santeria, Camdoble, and Vodoun-- and creates art quilts that are spiritual/religious in nature. Teresa is a fiber artist who is constantly seeking out new ways to express herself on fabric. She uses mixed media techniques that include using beads, various threads and fibers, charms, buttons, shells, embellished felt, oil paint sticks, wax pastels, fabric paint, dyes, and other embellishments on her quilts to create a textured surface. She also adds text to her quilts so that they can "speak" for themselves.

Teresa has exhibited both nationally and internationally. She has also been featured in several publications. In addition, she now teaches mixed media techniques and art quilt classes (including Fabric Postcards, Using Angelina Fiber, and Beading and Distressing Fabric for Art Quilts) at different venues around the NYC area.

## JUNE THIMBLE EXCHANGE CHALLENGE

Ligaya Siacchongco and Jane Broaddus are presenting a challenge for the June meeting. Make one or more cloth thimbles for an exchange. Pattern and instructions are also available on the website.



### Fabric Thimble Instructions

Cut out the thimble template (left). Cut out a piece of decorative fabric larger than twice the size of the template.

Cut out a 2-inch square of fusible web such as HeatnBond. Fold the fabric in half, wrong sides together. Insert the square of fusible web into the fold of the fabric face down until it meets the crease. Unfold the fabric and iron on the fusible web. Take the paper backing off, refold the fabric, and fuse the two layers together with the iron. Position the template on the fabric so that the bottom edge is lined up with the fold. Cut around the outer line.

To prepare the other side of the thimble, fold a contrasting piece of fabric in half with wrong sides facing each other. Cut out another 2-inch square of fusible web and insert it into the fold of the fabric. Unfold the fabric and iron on the fusible web; take off the paper backing. Cut out a piece of leather (or other stiff material such as Timtex) in the shape of the inner solid line of the template. Insert and center it in the fold with the straight end aligned with the fold. Refold the fabric and fuse the two layers together with the iron. Position the template so that the leather piece lines up with the inner line and so that the bottom edge of the template is lined up with the fold. Cut around the outer line.

Put the two pieces together with right sides facing each other. Sew around the dashed line. Lightly cover the raw edges with a liquid seam sealant. Turn the thimble right side out by pinching the tip and rolling down the bottom edge. Use a knitting needle or chopstick to smooth out the seam allowance inside the thimble.

### Decorative options



Using enough fabric to fit into a hoop, embroider a design. Carefully position the template over the design before cutting it out.

Bead or embellish fabric and position template accordingly.

Couch embroidery thread around the seam.

Couch embroidery thread and/or bead around the bottom edge.

Empire member - Brian Hamilton - recently passed away after a long illness. We wish to offer our condolences to his loved ones.

As a result of the storm this past weekend, the Norwalk (CT) river flooded its banks, and unfortunately Quilt Essentials was a victim of the flood. At this time the store is closed, they've lost more than 1/2 their inventory, and are unsure if they'll be able to re-open. We're sorry to hear of this catastrophe that has befallen such a strong support of Empire Quilters.

**A QUILTER'S NOTION**  
**"YOUR COMPLETE QUILTING, SEWING & NEEDLE ART SHOP IN QUEENS"**

**HUNDREDS OF BOLTS OF TOP DESIGNER FABRICS, LARGE SELECTION OF THREADS,  
QUILTING & SEWING NOTIONS, YARNS, BOOKS, PATTERNS & SO MUCH MORE!**

**QUILTING, SEWING, KNITTING & CROCHET CLASSES AVAILABLE - FROM BEGINNER TO  
ADVANCED. KIDS CLASSES AVAILABLE AGES 8-14.**



**10% GUILD MEMBERS & SENIOR CITIZEN DISCOUNTS**

**59-08 WOODSIDE AVE, WOODSIDE, NY 11377**  
**PHONE: 718-424-4691 FAX: 718-424-4692**  
**MON - FRI 11:00- 6:00 // SAT & SUN 10:30 - 6:00PM**

**[WWW.AQUILTERSNOTION.COM](http://WWW.AQUILTERSNOTION.COM)**

**INFO@AQUILTERSNOTION.COM**

**CONVENIENTLY LOCATED 1 ½ BLOCKS FROM THE #7 / LIRR TRAIN STOP AT 61<sup>ST</sup>  
STREET/WOODSIDE. WALKING DISTANCE FROM M/32, Q18 & Q60 BUS LINES.**

**Help Wanted: Elder Craftsmen Teachers, Spring 2007**

**Elder Craftsmen, Inc.** is a fifty-year old non-profit organization that teaches a variety of crafts to older adults in senior centers and other venues throughout New York City. Their mission is to help older adults be creative, productive and independent while seeking broader public recognition of the skills and capabilities of older people. They operate more than 90 training classes and community service projects every year, serving over 1,000 clients and 100 community-based organizations. Elder Craftsmen enjoys a reputation for producing unique high quality, heritage-based crafts, many of which are donated to organizations that serve individuals in need.

They are currently seeking experienced crafts instructors to teach: General Crafts, Art-Based Projects, Painting, Collage, Quilting, Sewing, Beading, Crochet, Doll Making, and Heritage-based Crafts.

**QUALIFICATIONS:** Multi-skilled individuals with several years experience in making and teaching a broad range of general crafts. Excellent communication skills a must. Willingness to travel throughout New York City. Spanish and Chinese language skills a plus. Experience teaching or working with older adults a plus. *\*Individuals 55+ strongly encouraged to apply.*

**TO APPLY:** Email cover letter and resume to [pat@eldercraftsmen.org](mailto:pat@eldercraftsmen.org). To find out more about **Elder Craftsmen** visit their website: [www.eldercraftsmen.org](http://www.eldercraftsmen.org)

**SCRAP/SHARE TABLE**

Thank you everyone who has contributed to the Scrap/Share Table in one way or another, either by donating fabric or by purchasing fabric. This event is the final aspect of the Guild meeting, even though the items are placed under cover early on before the actual meeting starts and, as we all know, the proceeds from this sale are to keep the Guild treasury healthy for our future

activities. It is a challenge to sort through the fabric on the various tables set up for this, but it seems that everyone is up to the task and enjoying the digging and "friendly pushing" to acquire that special piece to enhance a project in progress. Once again, thank you all for your support.

**Veronique Milliez and Anna Krassy**

**Harvey's**

**"Sew Right Sewing Machines"  
Closed Sundays until Oct. after  
4/29**

\*\*\*\*\*

**Authorized Sales & Service on:  
Husqvarna Viking • Bernina  
Baby Lock • Elna • Janome  
And NY's Best Repairs  
On All Makes!**

**Empire Guild Members  
Always save 10%  
On sewing machine repairs  
And all regular priced items**

**223-20 Union Tpke.  
Bayside, Queens, NY 11364**

**718-468-5858**

[info@sewright.com](mailto:info@sewright.com)

website [www.sewright.com](http://www.sewright.com)

\*offer good with current membership

**DYCKMAN MUSEUM PROJECT**

Those interested in making the blocks to reproduce the Dyckman Farmhouse Quilts should plan to come to the May meeting. Kits with all the fabric, patterns and instructions will be handed out and Diane Rode Schneck will



give a focus group on her needle turn applique method to start everyone off on the right foot. The director of the museum, Susan DeVries, also plans to attend the meeting. This was originally planned for the April meeting but circumstances dictated the change. Any questions, call **Mary Butler 212•662-7771**.

## MAY 5<sup>TH</sup> WORKSHOP

**Anna Faustino Teaches Circle Weaving Method.**

**Date: Saturday, May 5, 2007 Note!... This is the weekend before the general meeting.**

**Time: 9:30 am – 4:00 pm**

**Instructor: Anna Faustino**

Location: 343 8th Avenue, at 27th Street, New York City

**Cost: \$50 (includes kit)**

By popular demand, Empire Quilters guild member Anna Faustino will teach us her circle weaving method. Kits will be provided. No sewing machine needed.

**SUPPLY LIST:** Bring an iron, ironing cloth and mat, rotary cutter and mat, and **\*MOST IMPORTANT, A LONG TWEEZER\***, 90 pins, scissors. Everything else is included in the kit.

## JUNE WORKSHOP

**3½" Traditional Quilt Blocks — Folded Fabric**

**Date: Saturday, June 9, 2007 (New Day)**

**Time: 9:00 am – 12:00 pm. (New Time)**

**Instructor: Lorraine Keller**

Location: Fashion Institute of Technology (F.I.T.) David Dubinsky Center, 8<sup>th</sup> Floor 27<sup>th</sup> Street and 8<sup>th</sup> Avenue

**Cost: \$25.00**

Lorraine Keller became interested in folded fabric as a diversion from the long process of hand quilting a large quilt. She finds it mathematically intriguing to take the inspiration of a traditional quilt block and make miniature patterns for the folded fabric technique.

### **WORKSHOP SUPPLIES NEEDED:**

Rotary cutter with new blade, Cutting mat, 4" or 6" bias square ruler, iron (or Clover® mini iron), Glue stick such as Avery® (not hot glue stick), Sewing supplies (needle, thread, pins, etc.), Scraps of 3 fabrics (a light, dark, and medium), Spray starch.

Fabric with a one way design or prints with large spaces in the pattern are not suitable. Solids, tone on tone, pin dots, or overall mini print work best. These blocks make excellent quilters' Christmas tree ornaments using red, white and green fabric.

## ALZHEIMER'S QUILT PROJECT

“A Quilt to Remember” – a national Alzheimer’s quilt project.

The Alzheimer’s Foundation of America’s (AFA) Quilt to Remember pays tribute to all those who have passed or are living with dementia, and their families, so that others can recognize the reality and enormity of this disease, and acknowledge that we stand united for optimal care and a cure.

**Eric J. Hall**

**Chief Executive Officer, AFA**

### **Goals of the AFA Quilt to Remember:**

Bring the issue of “care... in addition to cure” to the national stage - unite, educate, motivate the nation.

Highlight the enormity and reality of Alzheimer’s disease and related illnesses in an unprecedented way.

Remember and honor individuals with Alzheimer’s disease and related illnesses – allow them to continue to speak.

Pay tribute to caregivers and healthcare professionals.

Bring comfort and empowerment to caregivers, providing a therapeutic outlet for emotions.

Educate the public about the disease, care-related issues and community resources

Engage dementia-related organizations in this activity.

Provide socialization and stimulation to individuals with dementia that participate in this quilt-making activity.

Foster community involvement in the cause.

If you are interested in participating in this project, you can go to their website at [www.alzquilt.org](http://www.alzquilt.org) to download instructions on making a panel as well as the application for submission.

You can also contact Cindy Russell at: [info@empirequilters.net](mailto:info@empirequilters.net) for application info.

**2006 – 2007 Guild Meeting Dates**  
(Meeting is the second Saturday of the month):  
**Sat, Jun 09, 2007 – 30 Traditional Quilts and Their History– Margot Cohen**



**Little Red Quilt House**  
**(203) 258-9464**  
**www.LRQH.Com**

**Longarm Quilting**  
**Basting Service**  
**Binding - Hand and Machine**

**No Rules**

Your Batting - No Problem  
Your Thread - No Problem  
Top Not Flat - No Problem  
Top Not Square - No Problem

***Any Quilt***  
***Any Condition***  
***We'll Finish It***

**SHOW CATALOG ON CD**

The Show Catalog CD is finished and is at the duplicators. The quilts are beautiful -this is a wonderful souvenir of our terrific 2007 Urban Inspirations Show. Congratulations to every participant.

The CD is available for \$20. To order a CD, contact guild member Cindy Russell ([crr@grv.com](mailto:crr@grv.com) or 212-414-9201), or download an order form from the guild website ([www.empirequilters.net](http://www.empirequilters.net)), or place your order online from the photographers: Hamlin Rose Photography: [www.hamlinrose.com](http://www.hamlinrose.com).

The CDs should be available for purchase at the May 12, 2007 guild meeting (depending on the speed of the duplicators). The photographers

are donating a portion of the receipts to the Empire Quilters to help support the guild's ongoing activities.

**LOWELL QUILT FESTIVAL TRIP**

If you are interested in the August bus trip to Lowell Quilt Festival, Keepsake Quilting and Quilting Arts, you can contact trip coordinator Aleeda Crawley at: [acrawley@publicitas.com](mailto:acrawley@publicitas.com).

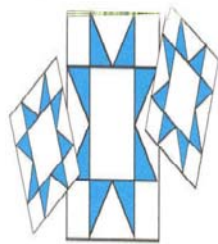
A deposit of \$50.00 is needed when you sign up and full payment is due at June 9<sup>th</sup> meeting. The cost is \$150.00 which includes transportation, tolls, driver gratuity, overnight (double) accommodations and room taxes. Food, housekeeping gratuity and shopping are all additional.

## NEWSLETTER DEADLINE

The deadline for the June, 2007 newsletter is: **Wednesday, May 16<sup>th</sup>**. Please send information to: Linda Lee Kelly, 950 Oaks Drive, Franklin Square, NY 11010 or e-mail: [LKELLY20@OPTONLINE.NET](mailto:LKELLY20@OPTONLINE.NET)

## WORKSHOP REGISTRATION POLICY

Payment in full for workshops is required by the date of the workshop. Members who cancel up to 7 days prior to the workshop will be refunded in full. If you cancel after that, refunds will be made **only** if a replacement student can be found.



## STOVER QUALITY QUILTING

All over patterns, Outline, In the Ditch, Marked and Stamped Patterns, plus Combinations

*all hand guided*

Backings and Battings also available

For free brochure, price list and information, please call 1-800-521-4171 or 573-377-2303

Or write to Stover Quality Quilting, 606 North Ash, Stover, MO 65078

e-mail: [Stoversq@advertisnet.com](mailto:Stoversq@advertisnet.com)

**CELEBRATING** over 60 years of Custom Machine Quilting

**New E-mail/Web address:**

[stoverqualityquilting@stovermo.com](mailto:stoverqualityquilting@stovermo.com)  
[www.stoverquilting.com](http://www.stoverquilting.com)

## 2006 – 2007 OFFICERS AND CHAIRS

<b>President:</b>	Jennifer Bigelow (203) 323-5138
<b>First Vice Pres:</b>	Marilyn Korn (212) 206-7203
<b>Second Vice Pres:</b>	Michael Greenberg (646) 638-2826
<b>Treasurer:</b>	Kitty Squire (718) 956-3005
<b>Secretary:</b>	Gail Lefton (718) 762-5499
<b>Block of the Month:</b>	Anna Krassy 212-242-3253
<b>Bus Trips:</b>	Aleeda Crawley (973) 313-0844 Sylvia Hughes (212) 665-5036
<b>By-Laws:</b>	Jennifer Bigelow (203) 323-5138
<b>Donations Coord:</b>	Diane Harris (718) 445-0482
<b>Focus Groups:</b>	Anna Faustino (201) 246-1142
<b>History/Archives:</b>	
<b>Library:</b>	Sylvia Hughes (212)-665-5036 Tina Barth (212) 691-3108 Pearl Chow (718) 263-5483 Regina Nordquist (212) 740-3615
<b>Membership:</b>	Emma Green (718) 723-8405 Maggie Williamson (718) 798-3692
<b>Newsletter. Advert.</b>	Cynthia Spurles (718) 545-4406
<b>Newsletter Editor:</b>	Linda Lee Kelly (516) 352-2268
<b>Newsletter Mailing:</b>	Susan Louis (718) 658-8352
<b>Nominating:</b>	Sylvia Hughes (212) 665-5036
<b>NQA Coordinator:</b>	Beth Pile (631) 286-5532
<b>Programs:</b>	Barbara Hull (718) 229-4895
<b>Quilter / Month:</b>	Debra J. Levin (212) 832-8575
<b>Raffle:</b>	Pat Decker (718) 544-2034 JoAnn Montalbano (516) 770-3656 Anita Duncan (212) 889-2067
<b>Service:</b>	Denise Walsh-Horowitz (718) 454-1944, Pamela Leonard Wexler (212) 662-4237 Alice Oberstein (718) 591-4639 Marion Webber (718) 276-3852
<b>Share Table:</b>	Veronique Milliez (212) 534-6604 Anna Krassy (212) 242-3253
<b>Show &amp; Tell:</b>	Sylvia Hughes (212) 665-5036
<b>Sunshine:</b>	Beth Pile (631) 286-5532
<b>2007 Quilt Show:</b>	Larry Gifford (212) 717-0892
<b>Ways &amp; Means:</b>	Paula Kenney (212) 982-8043
<b>Website:</b>	Cindy Russell (212) 414-9201
<b>Welcoming:</b>	Beth Pile (631) 286-5532
<b>Workshops:</b>	Mary Butler (212) 662-7771