

**Old Chelsea Station
P.O. Box 1293
New York, NY 10113
WWW.EMPIREQUILTERS.NET**

FIRST CLASS MAIL

**DATED MATERIAL
Please Deliver Immediately**

**NEXT MEETING: MARCH 10, 2007
11 AM TO 12 PM – BOARD MEETING
1 PM TO 5 PM – GENERAL MEETING
Fashion Institute of Technology (F.I.T.)
David Dubinsky Center, 8th Floor
West 27th Street & 8th Avenue, NYC
GUEST FEE \$5.00**

**PROGRAM: “CHARITY QUILTING DAY”
THERE WILL BE NO: VENDOR, Q.O.M., WORKSHOP,
RAFFLES, SCRAP TABLE (Bring your Donations in
April), LIBRARY (Books due in April), SHOW & TELL**

“Quilt Judging Day”
Just a reminder to all members who wish to have their show quilts Judged, you must have your show quilts on site no later than **9:30a.m.** on the morning of our March meeting: **March 10, 2007. Pick up Sunday, March 11 from 1:00 pm – 3:00pm**

PROGRAM

It's time for our annual Charity Quilting Day! Throughout the day we will be putting our efforts into making as many quilts as possible for the charities that the guild supports. The day will start early this month. Those members who are having their quilts judged for the upcoming show need to have their quilts onsite by

9:30 am., so we'll be ready to begin working on our Charity quilts soon after that time.

Bring your ideas, sewing machine (if you can), sewing supplies, fabric, quilt tops, quilt backings, and needles and yarn for tying. But most importantly — bring yourself! There are plenty of experienced quilters on hand who are able and willing to show everyone how to participate. Bring quilt tops you have for charity quilts. The charity committee has been saving large pieces of fabric from the scrap table, so we will do our best to match your quilt top with a quilt back. If you have fabric that you would like to donate for charity, please bring it with you. The more we have, the nicer the quilts will be. Once again, City Quilter has donated the batting for our day.

PRESIDENT'S MESSAGE

Hello fellow quilters. We're in our final month of preparations for Empire Quilters' 25th anniversary quilt show. Dozens of our members have put in hundreds of hours in planning, scheduling, preparing promotional information like our beautiful postcards and posters, and in creating the show program. I cannot thank them enough.... And I cannot emphasize strongly enough the remaining need for volunteers to help with the activities of the show on the show weekend.

For those of you who have a quilt in the show, your submission is also your commitment to support the show by volunteering at least 4 hours of your time, either in pre-show activities or at the show. If you haven't already signed up for an activity, please contact Leila Lieberman immediately to agree on what time and activity you'll do. Please note that we take the obligation seriously, and count on you to do so too. If your quilt is shown, and you don't fulfill your volunteering obligation, you will not be permitted to show a quilt in our next show. It's that simple.

Our March meeting will be a busy one. It is our charity month – and since we have a number of organizations eagerly awaiting what quilts we can provide, I hope everyone will come ready to work and produce a record number of quilts. Please bring in finished, quilts; quilt tops, blocks, or fabric. It's all good . . .and it's all appreciated. Look further in the newsletter for more information about what you can bring and do to make this a very successful day.


The second big activity for the March meeting weekend is the judging of the quilts for the show. **Please note that due to the quantity of quilts being judged, this will be a 2-day event, not just Saturday.** Quilts must be delivered by 9:30 a.m. on Saturday, and may be picked up on Sunday between 1 p.m. and 3 p.m. When you –

or your designated other – pick up your quilt, you must have your receipt and some ID.

Finally – lest we forget in our excitement of preparing for the Show, we are still looking to fill a number of vacancies for committee chairs for the month-to-month guild meetings. Please refer to last month's newsletter for a list of the vacancies, and feel free to call me or Sylvia Hughes if you are interested or if you have questions. Descriptions of the committees can be read in the bylaws that are posted on our website.

The weather may be cold and really wintry now – but our spirits are sunny and warm as the spring days that will be here soon. I look forward to seeing you at the meeting and at the show.

Jennifer

BERNINA AUTHORIZED DEALER	FABRIC CLASSES, SUPPLIES KITS
	THE QUILT SHOP
5 PADANARAM RD.-RT. 37 DANBURY, CT 06811 WORTH THE TRIP	GINNY MURPHY TEL: 203-743-0543 wamquilt@aol.com

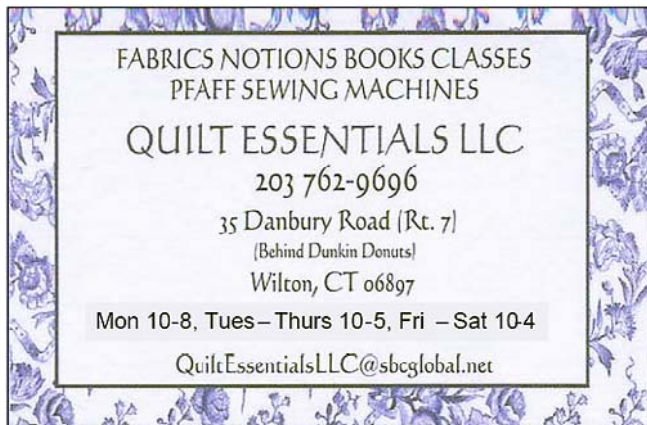
Empire members receive a 10% discount.

RAFFLE COMMITTEE

The Raffle Committee thanks these members for their generous contributions this past month: Marge Geary, Anna Foss, Dorothy Vasil, Susan Louis, Diane Rubenstein, Marilyn Korn, Mary Jane Van Loon and Beth Pile. We had another very successful month for the guild. Thanks also to Betty Chen and her wonderful son, Michael

and lovely daughter, Anna for their help selling tickets and picking the winners! Remember: March is Charity Quilt Day - we will not be having a raffle again until April.

Pat, Anita and Joann



Empire members receive a 10% discount.

CHARITY COMMITTEE

The Empire Quilters Charity Committee would like to thank the following members for their contributions in February:

Quilts: Dawn Rhodes – 1, Marie Annoul – 1, Anna Krassy – 1, Pat Decker – 1, Marie Segares – 1 quilt top

Baby Hats: Fannie D’Avino – 34, Carmen Caldeiro – 10

Fabric: Barbara Hull, Sylvia Zeveloff, Susan Louis

SUNSHINE/WELCOMING

We have had a new member influx this year. We are happy they are joining our dynamic guild. We had 8 new members join in February. They are Mary K. White, Tedi Brown, Rena Rapport, Ruth Nobel, Monika Smiley, R. E. Sunshine, Dechen C. Lipman, and Constance Phillips. Welcome them as you come to our meetings. Any questions? Contact

Beth Pile via email bpile@optonline.net or call 1-613-286-5532.

NQA INFO

If you are interested in joining the NQA I have the forms to fill out. They have a web site www.nqaquilts.org that has information about the group. The membership is \$20 a year and you will receive 4 magazines a year. NQA is located in Columbus, Ohio. They have both teaching and judging certifications. Empire Guilds chapter number is 494. Any questions? Call Beth Pile at 1-631-286-5532 or via email: bpile@optonline.net

LIBRARY NEWS

The book sale was very successful, the table was cleared very quickly and thanks to the members continued donations of books and magazines we raised a substantial sum for the Show. Our donation list this month includes Rita Reid (January and February), Dorothy Vasil, Cynthia Cunningham and Regina Nordquist. Anne Townley gave four books for the library. Next meeting will be the charity quilting day and there will be no library. Borrowed books should be held for an extra month. Please hold any donations until April.

There was a report in the previous Newsletter concerning the needs of the guild for service on the various committees that provide the programs, activities, and fund-raising that so many of us take for granted. The library committee members will also be moving on to other activities. It is a fun job; you meet many interesting people and get a lot of tips on books, magazines and quilting. Sylvia Hughes is our Chairperson, please volunteer at the next meeting or send her an e-mail before May so that we can do orientation by June

Catherine Bancroft

EMPIRE QUILTERS URBAN INSPIRATIONS QUILT SHOW 2007

We would like to acknowledge the show sponsors and thank them for their support of the show

Platinum Sponsors

Sew Right Sewing Machines as cosponsor with Baby Lock

Patron Sponsors

Maison de Janice

Eugenia Barnes

Friend

P & B Textiles

We acknowledge as well the many donors of gifts that are part of our door prizes and charity efforts

A full list of sponsors and donors with their contact information appears on our website in the listing of each

SHOW CATALOG ON CD

We're pleased to report that there will be a CD Catalog of all the show quilts. This will be a great souvenir of our Urban Inspirations Quilt Show. The CD is being produced and published by **Hamlin Rose Photography** – at *no cost to Empire Quilters*. Plan to order your CD Catalog – and some for your friends and families!

The CD will sell for \$20, but there is a special introductory price of **\$12.95**. Order before April

30 to take advantage of this price. Orders will be taken at the Show and at the April guild meeting. You will also be able to order online. Part of the receipts for all CDs sold will be donated to the guild to help support our ongoing activities. Stay tuned for more information.

Marcus Bros. Textiles

www.marcusbros.com has a **tips feature**; anyone sending in a tip that is used in their newsletter is eligible to win free fabric.

SHOW REPORT

2007 Quilt Show

Balance 1/16/07 \$ 16,292.48

Income	Month	YTD
Vendor Deposits	\$ 2,612.50	\$ 5,275.00
Raffle Sales	\$ 1,101.00	\$ 4,238.00
Quilt Submission	\$ 600.00	\$ 2,160.00
Program Ad	\$ 1,440.00	\$ 1,500.00
Totals	\$ 5,753.50	\$ 13,173.00

Expenses	Month	YTD
Bags for Boutique	\$ 47.00	\$ 47.00
Black Curtains	\$ 2,527.35	\$ 2,527.35
Entry Wristbands	\$ 323.56	\$ 323.56
Office Supplies	\$ 18.61	\$ 218.58
Postage	\$ 135.24	\$ 386.23
Promo Printing	\$ 526.64	\$ 1,701.12
Raffle Quilt Fabric		\$ 146.71
Raffle Tkt Printing		\$ 478.01
Ribbons		\$ 7.13
Vendor Refund		\$ 600.00
White Gloves	\$ 116.98	\$ 116.98
Totals	\$ 3,695.38	\$ 6,552.67

Balance as of
1/16/07 \$ 18,350.60

TREASURER'S REPORT

Treasurer's Report
1/17-2/14

Income as of 2-14	Month	YTD
Bus Trips	\$ 1,000.00	\$ 2,108.00
Fundraiser		\$ 929.50
Interest on Money Market	\$ 42.03	\$ 157.07
Library Income	\$ 131.42	\$ 226.27
Member Boutique		
Membership/Guests	\$ 390.00	\$ 6,180.00
Monthly Raffles	\$ 189.00	\$ 994.00

Newsletter Advertising	\$ 20.00	\$ 3,677.50
Share Table	\$ 105.00	\$ 525.00
Vendor Sales	\$ 247.00	\$ 411.90
Ways and Means (Bags, Lanyards, Pins)	\$ 37.00	\$ 1,131.00
Workshops	\$ 450.00	\$ 1,940.00
Deferred Income		\$ 3,605.00

Total Income \$ 2,611.45 \$ 21,885.24

Expenses as of 1/16/07	Month	YTD
Donation to Katrina-Habitat		\$ 200.00
Insurance		\$ 1,122.00
Library Expense	\$ 37.59	\$ 37.59
Miscellaneous	\$ 60.50	\$ 367.57
Newsletter Expense	\$ 344.47	\$ 1,843.09
Newsletter Mailing		\$ 569.40
Printing and Reproduction		\$ 63.05
Postage		\$ 16.92
Post Office Box		\$ 50.00
Quilt Rack		\$ 149.00
Rent	\$ 2,500.00	\$ 5,000.00
Speaker	\$ 275.00	\$ 1,614.05
Speaker Expenses	\$ 37.50	\$ 643.32
Stationery		
Trips		\$ 1,117.20
Ways and Means (Pins, Lanyards, Bags)		\$ 2,420.25
Website		\$ 131.65
Welcoming Committee		\$ 45.44
Workshop Expense		\$ 775.71
Workshop Teacher Fees		\$ 1,150.00

Total Expenses \$ 3,255.06 \$ 17,316.24

Current Bank Balance as of 2/14/07		
Quilt Show Checking	\$ 18,350.60	
Guild Checking	\$ 21,775.70	
	\$ 40,126.30	

BLOCK OF THE MONTH

I would like to thank the 11 participants in the February Red Hot Heart BOM. The lucky winner of the 21 beautiful hearts submitted was Carmen Caldeiro. Congratulations, Carmen!

The BOM for April is a mug/cup for coffee, tea or hot cocoa "A Cup To Wake Me Up After the Quilt Show." It can be sewn together with the following instructions or it can be paper pieced. The directions for sewing the cup are also on our website.

However, if you would like to paper piece the cup, see me at the March Charity Day meeting and I will have paper piecing copies available for your use. One caveat, when I copied the pattern, it came out a bit smaller by about 1/8th of an inch short of 6-1/2 unfinished, which makes it somewhat smaller than the 6 inch finished block that it should be. So you need to compensate for that by making the outside pieces a bit larger and then trimming it down. Have fun making it and I look forward to seeing your wonderfully imaginative cups in April.

Anna Krassy

A Cup to Wake Me Up After the Quilt Show

Material for cup and handle – approximately a 9 inch X 9 inch piece of colorful material with or without a pattern

Material for background – approximately 10" X 16" of light blue material

From the cup material, cut a 3 1/2 X 3 1/2 square – set aside for the time being

From the remaining cup material, cut a strip 3/4 X 1 3/4

From the background material, cut a strip 1 1/4 x 1 3/4. Sew this to the above cup strip along the 1 3/4 length side.

From the cup material, cut 2 strips 3/4 x 1 1/2. Sew one to the top and one to the bottom of the above joined strip. This forms the cup handle. To the right of this, sew a 1 3/4 x 2 1/2 blue background strip.

To the top of this section, sew a 1 x 2 3/4 strip of the blue background material and to the bottom a 1 x 2 3/4 strip. Sew this whole handle section to the right side of the cup, the 3 1/2 x 3 1/2 piece. To the left of the cup and handle section, sew a 1 1/4 x 3 1/2 blue background strip.

Sew a blue background strip 1 1/4 x 6 1/2 to the top of the above bigger section.

For the saucer section of the cup, cut a 1 1/4 x 4 1/2 strip from the cup material. Then cut one 1 1/4 x 2 piece from the blue background material. Place perpendicularly to the left side of the saucer piece. Draw a line from the bottom inside corner to the top outside corner and then fold back to give an angle to the saucer. Do the same on the right side of the saucer also using a 1 1/4 x 3 1/2 blue background piece. Measure and trim this saucer section to 1 1/4 x 6 1/2.



Take this saucer piece, mark the center of the saucer (without counting in the blue background), mark the center of the cup and then sew saucer section to the cup section. Then, to the bottom of this larger piece, sew the final 1 ¾ x 6 ½ blue background strip to complete the block which should measure 6 ½ x 6 ½ unfinished.



MARCH BIRTHDAYS

Joan Adler, Suzanne Antipur, Tina Barth, Lisa Belle, Evelyn Berkowitz, Benedicte Caneill, May Eason, Jessie Grant, Judy Isaacs, Kate Iscol, Annie Jeffrey, Jacquelynn Jones, Ellen Knudsen, Mary Levins, Dechen C. Lipman, Marilyn Lutzker, Helen F. Lynch, Nancy Lynch, Bettina Marks, Elaine Mauceli, Ulla-Britta McCarthy, Joann Montalbano, Alice Palmer, Dorothy Petras, Ruth Rembis, Lorna Spence-Ellis, Andrea Tebesceff, Maria Ting, Linda Warehime, Miriam Weintraub, Arlene Wiczyc, Maggie Wiliamson.

FEBRUARY SHOW & TELL

Our members were busy this month, and we're so pleased that they shared their work with the guild. Thank you to the following members:

Helen Beall (two *Quilted Portraits*), Jane Broaddus (*Beach Part I* fabric bead sampler), Lee Ebs (*Shall We Dance* and *What's Wrong in the Web?*), Anna Foss (two *Untitled Quilts*), Carol Hoffman (*Postcard*), Anna Krassy (*The Circus Goes Bananas*), Debra Levin (*Gridlock* and *Albers at Sea*), Karen Monath (*Tropical Triangles* and *Around the Bend*), Sandy Naval (three *Jouranl Quilts*), Una Petioni (*Shawl, Hat,*

Jewelry and *Stained Glass Flower quilt*), Janet Randolph (items for the Boutique: *Mini-Quilts* and *Tissue Box Holders*), Diane Rubenstein (*Starlight Starbright*), Ligay Siachongco (two *Mandala* quilts), and Myrna Williams (*Long Lap Quilt for JD*).

REVISED MEETING AGENDA

Have you brought a beautiful item to Guild meetings for Show and Tell only to find that the meeting ran long and you had to leave before sharing your work with the group? In order to allow time for any member to show his or her work, the order of business at the General Meeting will change. From now on, the agenda will be as follows: Business Meeting, Showing of Charity Quilts, Speaker, Break, Block of the Month, Show and Tell, Quilter of the Month, and Raffle. If you have any questions or comments, call **Gail Lefton at 718-762-5499**.

BOARD MEETING MINUTES ON WEBSITE

Our board meeting minutes are posted on our website at:

WWW.EMPIREQUILTERS.NET They can be found on the Committees page of the website and are in pdf. format. A password is required to open the file.

If you've forgotten the password, e-mail **info@empirequilters.net**. When your membership is verified, the password will be e-mailed to you. Additionally, the minutes can be perused at our meeting; they are to be found at our membership table.

Gail Lefton, Secretary

We are happy to introduce
our pretty little fabric shop...

purl
patchwork

a new source for all your quilting needs!

We feature cheerful vintage prints,
delicate historical reproduction fabrics,
beautiful contemporary designs,
and a rainbow of solid colors.

Purl Patchwork is at 147 Sullivan Street,
in New York City, between Prince and Houston.

Call us at 212-420-8798

And while you're in the area,
don't forget to visit our knitting store, Purl,
just down the street at 137 Sullivan Street.

Visit us online at

*purl*soho.com

STORE HOURS

MONDAY - FRIDAY 12-7 SATURDAY + SUNDAY 12-6

THE CITY QUILTER®



For All Your Quilting Needs

133 West 25th Street
212-807-0390
www.cityquilter.com

Tuesday - Friday, 11 to 7
Saturday, 10 to 6
Sunday, 11 to 5

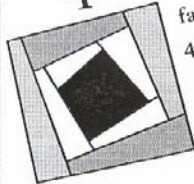
Guild Members
receive a 10% discount

The City Quilter is
proud to be one of
20 "Best Shops"
in North America

Pick up a copy of
**THE BEST OF
QUILT SAMPLER**

the
quilt cottage

fabrics • yarn • gifts
414 mamaroneck avenue
mamaroneck, ny 10543
(914) 777-1333



one block south of
Metro North
(mamaroneck station)

directions:
Hutchinson River Parkway
Exit 23S or I-95 NYS Thruway
Exit 18A (Mamaroneck Avenue)
to Mamaroneck business district.
1/4 mile from railroad station
on right-hand side.

distinctive collection of
cotton fabrics

unique assortment
of
ribbons,
swiss laces
&
trims

colorful,
funky,
yarns

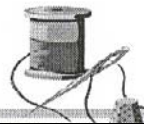
hours:
monday - saturday
10-6
www.quiltcottage.net

sewing machine
repairs

quilt finishing
&
restoration

special
orders

fabric buyers discount card



NEWSLETTER VIA E-MAIL

Are you tired of receiving your newsletter late? If so, there is an easy way to resolve this – have it delivered by email! You will receive it as soon as it is available and have the scoop on all of Empire's news early. Please email **Kitty Squire** at: Kesquilts33@msn.com with your name and e-mail address to enroll.

QUILT DROP OFF FOR SHOW

On **Friday, March 23, 2007**, all quilts entered in the Urban Inspirations Quilt Show, must be dropped off between **8:00am and 10:00 am**. You must enter thru the **28th street and 7th Avenue** entrance behind the subway. All volunteers must also enter through that entrance. On the days of the show, there will be signs pointing to this entrance.

QUILT PICK UP AFTER SHOW

On **Sunday, March 25, 2007**, all quilts displayed must be picked up between **6:00 pm and 7:00 pm**. You **MUST** have your receipt (s) to pick up your quilts.

PROGRAM COMMITTEE

Have you ever wondered why a certain person was booked to lecture at Empire? Have you ever had a great idea for a program? You are the people we are looking for. Empire is setting up a committee to handle programs for the next 2 years. If you would like to participate, please e-mail us at:

info@empirequilters.net. We want to form the committee in the next month, but will not schedule any meetings until our April meeting

2006 – 2007 Guild Meeting Dates

(All dates are the second Saturday of the month)

Sat, Apr 14, 2007 – Post Show Quilto Party

Sat, May 12, 2007 – The Good, Bad and Ugly Trunk Show – Linda Poole Prioleau

Sat, Jun 09, 2007 – 30 Traditional Quilts and Their History – Margot Cohen

Watch the website for information about programs and workshops.

WORKSHOPS

Anna Faustino Teaches Curved Weaving Method

Date: Saturday, May 5, 2007 Note!... This is the weekend before the general meeting.

Time: 9:30 am – 4:00 pm

Instructor: Anna Faustino

Location: 343 8th Avenue, at 27th Street, New York City

Cost: \$50 (includes kit)

By popular demand, Empire Quilters guild member Anna Faustino will teach us her curved weaving method. Kits will be provided. A complete supply list will be posted when it is available. No sewing machine needed. Sign up early — this workshop will fill up quickly.

Fairy Cottage

Date: Saturday, May 12, 2007

Time: 9:00 am – 12:00 pm. (Before the general meeting.)

Instructor: Linda Poole Prioleau

Location: Fashion Institute of Technology (F.I.T.), David Dubinsky Center, 8th Floor, 27th Street & 8th Avenue, New York City.

Cost: \$25.00 Supply list to follow.

Many of you may know Linda Poole Prioleau from her appearances on Simply Quilts with Alex Anderson. Linda will be demonstrating how to construct her Funky Little Houses. For more information about Linda, visit her website: www.matlyndesigns.com

3½" Traditional Quilt Blocks — Folded Fabric

Date: Sunday June 10, 2007

Time: 9:30 am – 4:00 pm.

Instructor: Lorraine Keller

Location: 343 8th Avenue, at 27th Street,
New York City


Cost: \$25.00

Lorraine Keller became interested in folded fabric as a diversion from the long process of hand quilting a large quilt. She finds it mathematically intriguing to take the inspiration of a traditional quilt block and make miniature patterns for the folded fabric technique.

WORKSHOP SUPPLIES NEEDED:

Rotary cutter with new blade, Cutting mat, 4" or 6" bias square ruler , iron (or Clover® mini iron), Glue stick such as Avery® (not hot glue stick), Sewing supplies (needle, thread, pins, etc.), Scraps of 3 fabrics (a light, dark, and medium), Spray starch.

Fabric with a one way design or prints with large spaces in the pattern are not suitable. Solids, tone on tone, pin dots, or overall mini print work best. These blocks make excellent quilters' Christmas tree ornaments using red, white and green fabric.

	<p>Longarm Quilting Basting Service Binding - Hand and Machine</p>
<p>Little Red Quilt House (203) 258-9464 www.LRQH.Com</p>	<p>No Rules Your Batting - No Problem Your Thread - No Problem Top Not Flat - No Problem Top Not Square - No Problem</p> <p><i>Any Quilt Any Condition We'll Finish It</i></p>

SHOWS & EVENTS

Empire member Jane Broaddus is teaching the last of three workshops at Materials for the Arts in March. The workshop is **free**, and you can register via e-mail to Susan Springer, Director of Education

(sspringer@mfta.org). When registering, list your affiliation as Empire Quilters Guild.

Directions to MFTA (Long Island City, Queens) are on the website (www.mfta.org). All supplies will be furnished by MFTA and there will be leftover goodies to take home.

Crochet with Fabric (Tuesday, March 20th 12-2 pm)

Crocheting with fabric strips produces a finished fabric that is ideal for household items such as rugs or placemats. Crocheted fabric strips also make unique bags, vests, and scarves. In this class, you will learn how to make a scarf. No previous experience in crochet is necessary. There will also be a demonstration on how to make yards of continuous bias strips and how to use a slotted ruler & rotary cutter.

Midwestern Amish Quilts

Date: On continuous view

Location: American Folk Art Museum, Lincoln Center Branch, 2 Lincoln Square (Columbus Avenue between 65th and 66th Streets), New York City

Cost: Museum entrance fee: \$9.00 (\$7.00 seniors). Free admission Fridays 5:30 – 7:30.

More Information: www.folkartmuseum.org.

Teresa Barkley: A Life in Quilts

Date: Now through April 1, 2007

What: Quilt Exhibit Sponsored in part by: Connecticut Commission on Culture & Tourism
Location: Stamford Museum and Nature Center, 39 Scofieldtown Road, Stamford, Connecticut
Hours: Mon–Sat: 9:00 am–5:00 pm; Sun: 11:00 am–5:00 pm

Cost: Museum Admission: \$8.00 (\$6.00 Seniors and Students) More information:

www.stamfordmuseum.org

Quilters' Heritage Celebration

Date: April 12 – 15, 2007

Location: Lancaster, Pennsylvania
More Information: www.qhconline.com

Tentative ... Empire Quilters will be taking a bus to this event. More information will be posted as it becomes available.

Date: Sat–Sun, May 5 – 6, 2007

A World of Quilts XXVIII Presented by: Northern Star Quilter's Guild

Location: John F. Kennedy High School, Route 138, Somers, New York

Cost: \$8.00/day (\$7.00 seniors)

More Information: Northern Star Quilter's Guild website:

www.northernstarquilters.com

9/11 National Tribute Quilt

Dates: On continuous view

Location: American Folk Art Museum, Lincoln Center Branch, 2 Lincoln Square (Columbus Avenue between 65th and 66th Streets), New York City Museum's Website:

www.folkartmuseum.org

Cost: Museum entrance fee: \$9.00 (\$7.00 seniors). Free admission Fridays 5:30 – 7:30.

More Information: See the American Folk Art

31st Annual Vermont Quilt Festival

Dates: June 29 — July 1, 2007

Location: Essex Junction, Vermont

More Information: www.vqf.org

New England's largest quilt event features hundreds of quilts on display, classes, lectures, appraisals, a merchant's mall, and much more.

The Great Catskill Mountain Quilt Show

Date: July 7 – 8, 2007

Presented By: The Quilteneers as part of the Mountain Culture Festival

Location: CMF Performing Arts Center (Red Barn), Route 23A, Main Street, Hunter, New York

Hours: 10:00 am – 6:00 pm daily. Free Parking.
Cost: \$8 adults, \$1 children. \$20 2-day pass, 2 adults

More Information: www.catskillmtn.org.

The Great Catskill Mountain Quilt show will feature quilts from Japan as well as regional quilters. Catskill Region quilters are invited to make quilts inspired by Japanese culture and/or quilting traditions.

Lowell Quilt Festival ... A Citywide Celebration of Quilts

Date: August 2 – 5, 2007

Presented by: New England Quilt Museum Auxiliary

Location: Lowell Memorial Auditorium and the Double Tree Hotel, Lowell, Massachusetts

More Information: Lowell Quilt Festival

website: www.lowellquiltfestival.org

Featuring Images 2007: Juried Quilt Show, Merchants mall, Antique Quilt Exhibit curated by Gerald Roy, and Uncovered in New Hampshire at The New England Quilt Museum. For more information about the New England Quilt Museum, see www.nequiltmuseum.org.

Empire Quilters is tentatively planning an overnight bus trip to this show. Please email info@empirequilters.net if you are interested, so we can make our plans.

YAHOO! GROUPS

We will be conducting future invites but you don't have to wait to join. It is as simple as sending us an email to EQG-subscribe@yahoogroups.com, mention your name and that you are an Empire Quilters member. That's all you need to get going.

If you have signed up you can always access the Group through the Yahoo Groups home page at <http://groups.yahoo.com/group/EQG/>. Here you will need to log in with your User ID and Password that you set up at the time of the invitation. You can also request an invite by clicking the "Join This Group" button. See you online.

HAPPY ANNIVERSARY!

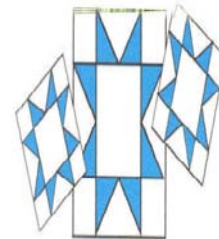
This year is the **10th anniversary** of City Quilter. Although the literal date is Feb. 18, 1997, they plan to celebrate in various ways throughout this 10th year.

The City Quilter was selected as one of 20 "BEST OF QUILT SAMPLER", and will appear in that special "bookazine", due out from Meredith Publications/American Patchwork and Quilting in the first few days of March. The editors chose the 20 from the 150 "Top Shops" that have been featured in QUILT SAMPLER since that magazine began publication. They feel quite honored. That BEST OF QUILT SAMPLER also features **Empire member and City Quilter teacher Judy Doenias'** project, and will be on sale at the shop.

The first City Quilter-staff designed and published quilt, "Bon Appetit", appears in the Spring issue of FABRIC TRENDS magazine, along with the pattern. It was created by Davida J. Hyland, Judy Doenias and Cathy Izzo. That FABRIC TRENDS issue and a kit are both available at the shop.

FOCUS GROUP

For those who want to plan ahead, **Janet Randolph** will be doing a focus group in April and May on **Attic Windows**. She showed us examples of her Attic Window quilts at the January Show and Tell.



STOVER QUALITY QUILTING

All over patterns, Outline, In the Ditch, Marked and Stamped Patterns, plus Combinations

all hand guided

Backings and Battings also available

For free brochure, price list and information, please call 1-800-521-4171 or 573-377-2303

Or write to Stover Quality Quilting, 606 North Ash, Stover, MO 65078

e-mail: Stoversq@advertisnet.com

CELEBRATING over 60 years of Custom Machine Quilting

New E-mail/Web address:

stoverqualityquilting@stovermo.com

www.stoverquilting.com

A QUILTER'S NOTION
"YOUR COMPLETE QUILTING, SEWING & NEEDLE ART SHOP IN QUEENS"

**HUNDREDS OF BOLTS OF TOP DESIGNER FABRICS, LARGE SELECTION OF THREADS,
QUILTING & SEWING NOTIONS, YARNS, BOOKS, PATTERNS & SO MUCH MORE!**

**QUILTING, SEWING, KNITTING & CROCHET CLASSES AVAILABLE - FROM BEGINNER TO
ADVANCED. KIDS CLASSES AVAILABLE AGES 8-14.**



10% GUILD MEMBERS & SENIOR CITIZEN DISCOUNTS

59-08 WOODSIDE AVE, WOODSIDE, NY 11377
PHONE: 718-424-4691 FAX: 718-424-4692
MON - FRI 11:00- 6:00 // SAT & SUN 10:30 - 6:00PM

WWW.AQUILTERSNOTION.COM

INFO@AQUILTERSNOTION.COM

**CONVENIENTLY LOCATED 1 ½ BLOCKS FROM THE #7 / LIRR TRAIN STOP AT 61ST
STREET/WOODSIDE. WALKING DISTANCE FROM M/32, Q18 & Q60 BUS LINES.**

GRAND OPENING
10% DISCOUNT FOR GUILD MEMBERS



**Beautiful Quilting Fabrics
& Handmade Boutique**

Specializing in baby and juvenile fabrics...
Call about our Quilt Consignment
Shop....

Harvey's "Sew Right Sewing Machines"

Now Open Sundays 11-4

Authorized Sales & Service on:

Husqvarna Viking • Baby Lock

Bernina • Elna • Janome

And NY's best repairs on all
makes!

Empire Guild Member Savings

***Always Save at least 10%**

on All Sewing Machine Repairs

and all regular priced items

223-20 Union Tpke. Bayside,
Queens

718-468-5858

info@sewright.com website
www.sewright.com

*offer good with current membership

VOLUNTEERS NEEDED

If you want to learn more about what work is involved in any of the open volunteer positions, please contact Jennifer Bigelow, Sylvia Hughes or the person already in the position; and remember, any position can be shared – making the work lighter and more fun. These are the positions or committees for which we're looking for volunteers:

Second Vice President

Historian & Archivist

Membership

Newsletter Advertising

**Nominating – we need a team to start
work now to fill these positions**

Programs

Service Committee

Ways & Means (need Chair)

RAFFLE TICKETS

It's getting very close to the show and now is the time to sell as many raffle tickets as you can. Buy some for yourself, as gifts, and sell them to your friends and family.

If you need more books, there is an order form on the website or you can contact Paula Kenney.

BUS TRIPS

The following bus trips are in the planning stages:

Lancaster Heritage Quilt Show – overnight trip April 14th and 15th.

Lowell Quilt Museum and Quilt Festival and stop at Keepsake Quilting. This is an overnight trip planned for August.

If you are interested, please let **Aleeda Crawley** or **Sylvia Hughes** know.

NEWSLETTER DEADLINE

The deadline for the April, 2007 newsletter is: **Wednesday, March 14th**. Please send information to: Linda Lee Kelly, 950 Oaks Drive, Franklin Square, NY 11010 or e-mail: LKELLY20@OPTONLINE.NET

WORKSHOP REGISTRATION POLICY

Payment in full for workshops is required by the date of the workshop. Members who cancel up to 7 days prior to the workshop will be refunded in full. If you cancel after that, refunds will be made **only** if a replacement student can be found.

EMPIRE LOGO ITEMS FOR SALE

The guild tote bags, pins and lanyards are in. Tote Bag \$20, Pin \$5 and Lanyard \$4. There will be an order form on the website.



“HAPPY ST. PATRICK’S DAY”

2006 -2007 OFFICERS AND CHAIRS

President:	Jennifer Bigelow (203) 323-5138
First Vice Pres:	Marilyn Korn (212) 206-7203
Second Vice Pres:	Michael Greenberg (646) 638-2826
Treasurer:	Kitty Squire (718) 956-3005
Secretary:	Gail Lefton (718) 762-5499 **
Block of the Month:	Anna Krassy 212-242-3253 **
Bus Trips:	Aleeda Crawley (973) 313-0844 ** Sylvia Hughes (212) 665-5036 **
By-Laws:	Jennifer Bigelow (203) 323-5138
Donations Coord:	Diane Harris (718) 445-0482**
Focus Groups:	Anna Faustino (201) 246-1142 **
History/Archives:	“Position Open”
Library:	Sylvia Hughes (212)-665-5036 Tina Barth (212) 691-3108 Pearl Chow (718) 263-5483 Regina Nordquist (212) 740-3615
Membership:	Emma Green (718) 723-8405 Maggie Williamson (718) 798-3692
Newsletter. Advert.	Cynthia Spurles (718) 545-4406
Newsletter Editor:	Linda Lee Kelly (516) 352-2268
Newsletter Mailing:	Susan Louis (718) 658-8352
Nominating:	Sylvia Hughes (212) 665-5036
NQA Coordinator:	Beth Pile (631) 286-5532
Programs:	Barbara Hull (718) 229-4895
Quilter / Month:	Debra J. Levin (212) 832-8575 **
Raffle:	Pat Decker (718) 544-2034 JoAnn Montalbano (516) 770-3656 Anita Duncan (212) 889-2067
Service:	Denise Walsh Horowitz (718) 454-1944, Pamela Leonard Wexler (212) 662-4237,** Alice Oberstein (718) 591-4639 Marion Webber (718) 276-3852
Share Table:	Veronique Milliez (212) 534-6604 Anna Krassy (212) 242-3253
Show & Tell:	Sylvia Hughes (212) 665-5036
Sunshine:	Beth Pile (631) 286-5532
2007 Quilt Show:	Larry Gifford (212) 717-0892
Ways & Means:	Paula Kenney (212) 982-8043
Website:	Cindy Russell (212) 414-9201
Welcoming:	Beth Pile (631) 286-5532
Workshops:	Mary Butler (212) 662-7771
** New Board Members	