

Old Chelsea Station, PO Box 1293, New York, NY 10113, WWW.EMPIREQUILTERS.NET

NEXT MEETING:
SATURDAY,
SEPTEMBER 8, 2007

Fashion Institute of
Technology (F.I.T.)
David Dubinsky
Center
8th floor
West 27th Street
at 8th Avenue, NYC

BOARD MEETING:
10:30A.M - 11:30A.M.

GENERAL
MEETING: 1:00 P.M.
- 5:00 P.M.
Guest Fee: \$10.00
Seniors: \$5.00

PROGRAM: Jo Coon -
Jacobean Appliqué

WORKSHOP: Sunday,
Sept. 9th - Jacobean
Appliqué with Jo Coon

VENDOR: Member
Flee Market

QUILTER OF THE
MONTH: Janet
Randolph

FIRST CLASS MAIL

DATED MATERIAL
Please Deliver Immediately

PROGRAM: JO COON - JACOBAN APPLIQUE



Come learn the story of Jacobean appliqué from an award-winning quilt maker and designer. This beautiful technique incorporates vines, intertwined branches and imaginative flowers — classical features with greater complexity and with more extravagant ornamentation. The design technique can be used to create incredibly beautiful quilts.

In addition to being an award-winning quilt maker, Jo Coon is an NQA Certified Teacher who has been teaching for over 30 years. She is also a design artist

with over 100 published patterns, and has designed over 400 quilts!

She is an original designer having over 100 published patterns. To date she has designed upwards of 400 quilts. As a result of having been a quilt shop owner, she is well versed in the field of quilting. Jo has been teaching for over 30 years, her classes vary from hand appliqué or machine piecing with embroidery and beading for embellishment. Her specialty being hand appliqué. Adding to her talent she dyes her own fabric. A unique technique of crushed color blending on 100% cotton muslin, a potpourri of color.

For more information about Jo Coon and to view her catalog of wonderful patterns, visit her website www.potpourripieces.com. Jo Coon will be conducting a day-long workshop on Sunday, September 9, 2007.

WORKSHOP: JACOBAN APPLIQUE WITH JO COON

Date: Sunday, September 9, 2007

Time: 9:30 am–4:00 pm

Instructor: Jo Coon

**Location: 343 8th Avenue, at 27th Street,
New York City**

Cost: \$50.00

Spend the day with award-winning quilt maker and AQS certified teacher Jo Coon. You will learn about color placement while arranging these fable fantasy flowers to suit your fancy. Enjoy this creative license. Embroidery stitches will also be taught to enhance your finishing.

If you are interested in this workshop, please contact **Mary Butler at 212-662-7771**.

WORKSHOP SUPPLIES:

- 18" x 18" tone on tone for background
- 1 yard border print with at least four repeats
- Fat eighths –or– 9" squares in a variety of greens, 3 shades
- Fat eighths –or– 9" squares in a variety of colors for flowers
- Floss or 12 wt pearl cotton: 2 dark green, 1 olive or shade lighter, and a variety of colors to match your choice of fabric for flowers.
- Thread: 50 wt cotton or silk
- Needles: 10 or 11 Straw
- Needle threader
- Sequin pins or basting glue
- Glass beads to embellish with (optional)
- Scissors: Embroidery scissors with sharp points, fabric scissors and paper scissors
- Marking tools
- Light box
- Sewing light with extension cord

See the Workshops page on the Empire website for upcoming workshops for the season.
--

PRESIDENT'S MESSAGE

Friends: Welcome back. I hope your summer has been filled with delightful events. We've been very fortunate to have excellent weather for most of the summer - having so far avoided the blistering heat wave like we had last year.

I recently returned from a 2-week vacation at Quilting by the Lake, in upstate New York, where I was happy as always to see a number of our members. I've come from my 2-week vacation with a couple new projects, and many new ideas and ways to think about creating quilts that truly

represent what matters to me. There are so many programs available all over the country these days for quilters having a variety of interests, skills and experiences. You could even take a cruise and quilt!

I encourage you to participate in our focus groups and workshops to access experience and knowledge at a much more economical rate. When I say participate, however, I don't just mean as an attendee - - as always this Guild needs the members to be more active participants through volunteering. We have so many accomplished quilters, and it would take only a bit of time to prepare a small focus group on a topic - whether some more traditional quilting topic or something that stretches our artistic expression. Please contact Anna Faustino if you're willing to lead a focus group. Your contribution will be much appreciated and you'll be furthering the art and skills of quilting in NYC.

I'd like to thank the members of the Guild who have agreed to take on new roles on the Board and on the various committees. I also want to let you know that a small but determined group has had the first of many planning meetings for our next quilt show - which we're planning to have in March of 2009. It's not that far away - and there's a lot of work to do. Please contact Paula Kenney or Larry Gifford and let us know how you'd be able to help. We have work to begin now and would surely welcome more hands to the job.

I look forward to seeing you in September. I'll enjoy seeing you all again, and hope you'll enjoy the program. Please remember, instead of a vendor, September will be a Member's Flea Market. If you want a table, please contact Larry Gifford. Details about having a table and the hours of the members' sales can be found in the next column of this page. **Jennifer**

MEMBER'S FLEA MARKET

We announced at the May meeting we would have a member's flea market at the September meeting in lieu of a vendor. It was announced that we would make tables available for members at a cost of \$10.00 for a 4x4 table and \$20.00 for a 3x6 foot table. Members can set up and sell from the end of the Board meeting (11:30AM) in the Board meeting room. Tables must close for the General meeting time (1:00PM) and can reopen after the meeting if members want to sell until 5 PM. Table sharing is ok. At this time I have 9 members signed up for tables. I will take additional table reservations until August 30th. Please contact me at: Lawgifford@msn.com or 212-717-0892 Thanks, **Larry Gifford**

Attention all **Dyckman Farmhouse Museum** block quilters! Please bring your quilted block to the September meeting. You will be given the sashing, back and front along with the batting. A semi-focus group will convene after the meeting to give you instructions on joining the blocks. If there are some who cannot work on this during the month, please call **Mary Butler** at **212-662-7771** so someone else can pick up the work. By the October meeting, we should have the blocks assembled and ready for binding. That will take place during the Heritage Tour, Saturday October 26 at the Museum. Those who want to participate can sign up at the October meeting.



LOWELL TRIP By Jane Rosenthal

At the crack of dawn on Friday August 3rd, a little over 40 of us set out on an adventure to Lowell, Mass. The drive went quickly with the help of donuts and coffee. Our first stop was the Quilting Arts Magazine headquarters and store. We were greeted by the Editor-in-Chief of the Magazine, Patricia

Chatham Bolton, who held a free raffle for prizes of their latest calendar and other cool gifts. The quilts that were the finalists for the calendar were on display and there was plenty of lemonade served by Patricia's nieces and nephews.

Our next stop was the Keepsake Quilting store in Center Harbor, New Hampshire. Several of the shoppers felt overwhelmed by the amazing selection at the store, but everyone found the strength to buy fabric and supplies. It is truly an amazing store with a friendly staff.

After the excitement of the Keepsake store, we needed rest. So we made it to the Radisson Inn just a few miles away from Lowell. We all got some rest, and early on Saturday morning headed off to the Lowell Quilt Show. Lowell is a very quaint old town and it

was a pleasure to visit the Quilt Museum and the Quilt Show. I found the journal quilts at the show of particular interest. They were wonderfully intricate and detailed. Artist's stories accompanied the journal quilts, which added to the experience. And of course, there were amazing entries that were colorful and beautifully stitched. I felt so inspired that I couldn't wait to head home and set to work! There was also a very large area of vendors at a hotel in Lowell, so anything that wasn't found at Keepsake was surely at the vendor's area.

An amazing trip led by our fearless leaders Aleeda and Sylvia. I can't wait to go again next year!

MEMBER'S NEWS



Empire member, **Lynette Baker's** Quilt Exhibition will be at the Elmont Public Library 700 Hempstead Turnpike, Elmont, NY 11003. 516-354-5280. The exhibition runs from Sept. 4 - 30th, 2007. The reception is: Sunday, Sept. 23, 2007

from 2-4PM. It is a solo exhibition. Congratulations, Lynette!

Congratulations to guild member **Joyce Morici Fischer** for her Judges Merit Award at the recent **Eastern Long Island Quilters Guild's** 26th Annual Peconic Quilt Show. Joyce's quilt *Sweet Cherries My Way* received the Honorable Mention in the Medium Size Wall Quilt Category. Congratulations, Joyce!

Once again **Mary Louise Smith** will be making our guild proud by having quilts in *three* special exhibits, the upcoming International Quilts Festivals in Houston (November 2007) and Chicago (April 2008). Mary Louise will have quilts in the following exhibits: *Creative Quilting*, *The Journal Quilt Project* and *Fabled Fibers*. Those of you lucky enough to go to either of these shows should be on the lookout for these works. Congratulations, Mary Louise!

Please send in news of your quilting and artistic accomplishments, we would all love to hear about them.



QUILTER OF THE MONTH

Janet Randolph has taught quilting and sewing for many years. She will show quilts and quilt tops from her classes. Her "assets and treasures" include one husband, three children, six grandchildren and three great-grandchildren, a room full of fabric, a room full of books and ten sewing machines.



FOCUS GROUP

T-Shirt Embellishment Focus Group
(Also sweats, shirts, nighties, etc.)

Date: Saturday, September 8, 2007

Time: 10:30 am

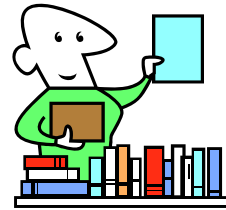
Group Leader: Anna Foss

Location: Fashion Institute of Technology (F.I.T.), David Dubinsky Center, 8th Floor, 27th Street & 8th Avenue, NYC

Open To: All guild members.

Want to flaunt your "quiltership", have something completed while finishing your masterpiece, or just cover up a coffee or salad stain? We'll work at ways to decorate, embellish, camouflage while advancing our quilting and sewing skills to create a garment ready for a quilt show or meeting. Don't throw away that tee or shirt until you've tried to make a silk purse out of it. Dig around your quilting supplies for orphan blocks or appliqués, leftover beads and trinkets. If you've made a plain sweat into a quilt beauty, bring it in and share with us. Focus group starts at September meeting,

10:30 am; will continue into October and beyond--the holidays are coming, too. We'll also swap where to find bargain tees and sweats.



LIBRARY NEWS

There will be no Library in September, but we will collect returns only. That also means that we cannot take any book or magazine donations in September. We did get a donation of 50 books from member Mary Galgan, and Mary emailed the list to me. So, I knew that there were many books that would be welcome at the library. Thanks to Diane Harris, our Donations Coordinator, who will bring the books in October.

In August, Tina Barth and I joined our new Library volunteer Susan Stauber, spending several hours to make sure that all of the books will be ready for the 2007-2008 year. As always, Tina also served us tea and lunch while we did our work. A special thanks to my friend Pat Henry, who worked with us in August.

In October, we will have a book sale, as well as our usual magazine sales. The library committee will be choosing new books for the library. Remember, that you can see the book list on our web site, so feel free to get in touch with me if there are books and/or types of books that you feel the library should own.

Sylvia Hughes
212-665-5036



**The City Quilter is
now a
Handquilter
Dealer**

**Call for an appointment
to see this amazing
machine!**

**The New York Metro Area's
Handquilter Dealer**

www.cityquilter.com
212-807-0390

Tuesday - Friday, 11 to 7
Saturday, 10 to 6
Sunday, 11 to 5

NQA NEWS

Empire Guild is a Chapter member of the NQA. Our chapter number is 494. They are the largest Quilting Association to offer certification for judging. We have many members who belong to this group. Members receive a Quarterly magazine. They hold a show yearly usually in Columbus Ohio. Columbus is their headquarters. NQA's show will be June 19-21, 2008. Their web site is <http://www.nqaquilts.org/>. They offer a grant program for quilt related projects where they feel the community would benefit. If you would like to join see **Beth Pile** or call **631-286-5532**.

WELCOMING

September is usually our most attended meeting by new quilters. We have had such growth in our membership these past few years. Our system of welcoming seems to

be working. Establishing a special table for newcomers has worked well also. The use of name tags to identify newcomers has helped too. I hope all of our members continue to welcome those who are new to our guild. We have such a diverse and dynamic guild. This year will have many special programs and workshops. Let's have a great year. Any suggestions call **Beth 631-286-5532** or bpile@optonline.net



BERNINA
AUTHORIZED DEALER

FABRIC
CLASSES, SUPPLIES
KITS

**THE QUILT
SHOP**

5 PADANARAM RD.-RT. 37
DANBURY, CT 06811
WORTH THE TRIP

GINNY MURPHY
TEL: 203-743-0543
wamquilt@aol.com

Empire members receive a 10% discount.



RENEW YOUR MEMBERSHIP!

MEMBERSHIP RENEWAL: 2007 – 2008

Empire Quilters Guild is dedicated to the art and craft of quilting, and to providing handmade quilts to charities in the New York metropolitan area. Guild membership is open to all individuals interested in quilting, and quilters of all skill levels. Each membership helps to advance our goals of education, sharing and service. Please renew now!

This is the only renewal request you will receive. Individual renewal notices are not mailed.

Dues:

Yearly Dues Category:

- Regular \$45
 Senior \$30 (65 and over)

Show Volunteers:

If you volunteered at the 2007 Show, you are entitled to a rebate of \$8.00.

- I want my rebate
 I do NOT want my rebate

Newsletter:

Select **one** delivery method:

- Email to email address:

- First Class Mail

Please consider receiving your monthly newsletter via email, and check that preference above. You will receive the newsletter in a more timely fashion, and you will save the guild printing and postage costs. Thank you!

Contribution:

Additional tax-deductible contribution:

\$ _____

Name: _____

Telephone: _____

Address: _____

Cell: _____

Email: _____

City, ST, Zip: _____

Birthday: _____

What is your interest and level in quilting? Please indicate which activities you might like to participate in:

- | | | | |
|--|---|---|---|
| <input type="checkbox"/> I don't quilt | <input type="checkbox"/> Block of the Month | <input type="checkbox"/> Membership | <input type="checkbox"/> Quilter of the Month |
| <input type="checkbox"/> I would like to learn | <input type="checkbox"/> Bus Trips | <input type="checkbox"/> Newsletter Advertising | <input type="checkbox"/> Raffles (monthly) |
| <input type="checkbox"/> Beginning quilter | <input type="checkbox"/> Charity / Service | <input type="checkbox"/> Newsletter Editing | <input type="checkbox"/> Share Table |
| <input type="checkbox"/> Intermediate quilter | <input type="checkbox"/> Focus Groups | <input type="checkbox"/> Newsletter Mailing | <input type="checkbox"/> Show & Tell |
| <input type="checkbox"/> Advanced quilter | <input type="checkbox"/> History / Archives | <input type="checkbox"/> Programs | <input type="checkbox"/> Ways & Means |
| <input type="checkbox"/> Professional quilter | <input type="checkbox"/> Hospitality | <input type="checkbox"/> Public relations | <input type="checkbox"/> Website |
| | <input type="checkbox"/> Library | <input type="checkbox"/> Quilt Show | <input type="checkbox"/> Workshops |
| | <input type="checkbox"/> Other (please describe): | | |

Are you a member of the National Quilting Association? No Yes: Membership Number: _____

We want to hear from you! Please submit any comments or suggestions that you have for the guild's operations or activities with this renewal form. If you have special skills to contribute, **please let us know!** If you are interested in serving on a committee, **we want to hear from you!** Your participation in the guild helps make the guild better.

Bring your completed form (with payment) to the **June 9, 2007** guild meeting, or mail in the completed form.

Mail To: **Empire Quilters, Inc.**
 Old Chelsea Station
 P.O. Box 1293
 New York, NY 10113

- Enclose a check for your annual dues, payable to: **Empire Quilters.**
- Please pick up your membership card at the next guild meeting .
- **Memberships are not acknowledged by mail.**

Office Use: ___ Check ___ Cash Amt: \$ _____ Notes:

A QUILTER'S NOTION

59-08 Woodside Ave ~ Woodside, NY 11377

Phone: 718-424-4691 ~ Fax: 718-424-4692

www.aquiltersnotion.com ~ quilters@aquiltersnotion.com

Over 2000 Different Top Quality, Designer, Quilt Shop, 100% Cotton Fabrics.
Books, Patterns, Quilting & Sewing Notions, Yarns & Needle art Supplies.

Join any of our monthly clubs:

Mystery Monday	Stash-o-licious Saturday	Strip Club
Log Cabin Fever	Block of The Month	Serger Club
Machine Embroidery Club	Thangles™ Buck a Block Program	

Guild Members Receive 10% off All Purchases

We are conveniently located at the 61st / Woodside stop on the #7 Train and the LIRR
Just one block walk from the M & Q 32 bus lines, Q18 bus line and 4 blocks from the Q60
Queens Blvd bus line.

CANA LONG ARM MACHINE QUILTING

With Over 18 Years of Experience & Exceptional Quality... "We Are a Name You Can Trust"

Carrie 516-644-7703

CALL THE SHOP TO MAKE AN APPOINTMENT TO DROP OFF YOUR QUILT TOP AND SPEAK TO CARRIE

CHARITY REPORT

We look forward to receiving all those great items you've worked on and collected for us this summer. While we welcome your charity quilts all through the Empire year, we especially need quilt tops for our March Charity Day. Remember last March when we did not have enough tops? Let's work together to make sure we have tons of tops on Charity Day. Due to batting shortfalls, we must ask that your tops NOT exceed twin size—70x94. Speaking of batting, please bring that in too, if you can, on Charity Day; we never have enough of that good stuff. And don't forget backs, too!

We received quilts at the June meeting. Thanks to the following members for the June quilts, hats and fabrics:

Ann Strauss - 2 quilts; Pamela Wexler Leonard - 1 quilt; Margaret Umansky - 1 quilt; Fanny D'Amico - 8 baby hats; Sandy Syken - 58 baby hats; and fabric received

from Anna Faustino, Eve Weiner, Mary Butler and Sylvia Zeveloff. We look forward to a great year making quilts for charity. To all our members, please start to make your tops for charity day. We had so many great donations of backing fabric, but we really need tops, too. Many members make a top and include the back as well, so you may want to keep this in mind when you make your charity quilts. Let's make this a great year. **Denise, Joan, and Pamela**

Are you tired of receiving your newsletter late? If so, there is an easy way to resolve this-have it delivered by e-mail! You will receive it as soon as it is available and have the scoop on all of Empire's news early.

Please e-mail Kitty Squire at:

Kesquilts33@msn.com with your name and e-mail address to enroll.

OCTOBER BLOCK OF THE MONTH

A Sign of the West This block is 9 ½ inches unfinished (9 inches finished)



Please note that some of the indicated measurements are out of the ordinary.
Fabric colors are yellow, brown, orange, turquoise, and purple. There is a color photo on the website.

Start with a yellow square 2 ½ X 2 ½ inches
Make two brown squares at 2 ½ X 2 ½ inches and cut each diagonally
Sew a triangle to each side of the yellow square to make a square within a square. The result will be larger than necessary giving you some wiggle room.

Trim the resulting square to 3 ¼ X 3 ¼ inches making sure that there is a ¼ inch on each side to ensure clean and sharp points for the yellow center.

Next cut two strips of orange fabric at 1 ¾ X 3 ¼ inches. Sew to top and bottom of the yellow/brown square.

Cut two strips of orange fabric 5-7/8 X 1 ¾ inches. Sew to the sides of the square. Trim the resulting square to 5 ½ X 5 ½ inches.

Cut two strips of turquoise fabric 5 ½ X 1 ½ inches. Sew to top and bottom of the square.

Cut two strips of turquoise fabric 7 ½ X 1 ½ inches. Sew to sides of the square.

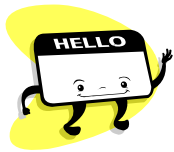
Cut four turquoise squares at 1 ½ X 1 ½ inches.

Cut four purple strips 1 ½ X 3 ½ inches. Sew one purple strip to both sides of two turquoise squares and then sew the resulting strip to the top and bottom of the square.

Cut four purple strips 1 ½ X 4 ½ inches. Sew one purple strip to both sides of the remaining two turquoise squares and then sew the resulting strip to the two sides.

The finished product should measure 9 ½ X 9 ½ inches square.

WHAT'S YOUR NAME????????????



Our membership has soared. At the last count we numbered 340 members; many of whom are new or relatively new to the Guild.

We are asking all members to wear your membership card or some form of name tag. For those of you who renewed in June, you received a purple membership card. Please wear it.

As an incentive, all members wearing their ID will be entitled to a free \$1 dollar raffle ticket.

For the month of September, I will be selling The Tote Bag, Show Pin and Lanyards for \$20. Individually these items sold for \$29.

The cost of the lanyards will now be \$2. I will be at the membership table with these items.

I look forward to seeing you in September, **Paula**



URBAN INSPIRATIONS 2009

Plans are already in progress for the 2009 show. Having benefited by last years show experience, a group of us met to discuss ways to do it again.

The raffle quilt is ready for quilting; several people have volunteered to investigate some early issues. **HOWEVER**, we need **YOU** to help us and volunteer.

During the meeting we will ask you to fill out a questionnaire indicating what you would like to do. Some of the jobs need to be started now, some early next year, and then just prior to/or during the show.

Please consider becoming an active participant in this show. We want and need all of you. You can have a good time, meet new people and be part of the production.

We need Chairs for many key committees. If you are interested in working on the Show Committee itself, please contact any of the Show Co-Chairs/or write it on the form itself.

If you can't make it to the September meeting, the volunteer form is on the website in PDF format. Please fill it out and mail it to the address on the form.

Our last Show was great.....let's make this one even better.

Paula Kenney

Larry Gifford

Kitty Squire

Co-Chairs



GUILD EMAIL NOTICES

Many people have requested that the guild institute a system of notifying members via email when there are special announcements or quilting events. Well, *we already have such a system in place!* – and that is the guild Yahoo! group. The guild posts important notices on the Yahoo! group, so please join the group if you have not yet done so. If you set your group membership preferences to send email to you (either individual email messages or daily digests) you will not miss any important guild news. And there's more! ...

Not only can the guild officers send email to group members, but group members can post (send) their own email messages directly to the group. Group members can also post pictures of their work (fun!). Many of you have opted to receive their newsletter via email – *which is great* – and now we are also asking you to join the *Yahoo!* group so you won't miss any important news. We have selected this system for email notices because it is so flexible and allows members to post/send their own email. This means you don't have to submit a request to a guild officer – you can go online and post your own message.

Here's how to join the *Yahoo!* group:

Send an email to:

EQG-subscribe@yahoogroups.com

Here's what to say in the message:

"My name is ___ and I'm a member of Empire Quilters."

It's that easy. We'll double check your guild membership and ok your *Yahoo!* group participation. If you have troubles, contact one of the group moderators and we'll be glad to help:

Michael Greenberg: 646-638-2826,

ml.greenberg@verizon.net

Cindy Russell: 212-414-9201, crr@qrv.com

Jennifer Bigelow: 203-323-5138,

jmbigelow54@yahoo.com

Internet groups (especially *Yahoo!* groups) are fast becoming a standard way to share common interests. There are groups related to Dear Jane quilting, to Crazy Quilting, to Baltimore Album quilting ... to list just a few. There isn't a better way for you to learn about *Yahoo!* groups than to join the Empire Quilters group. We only allow guild members, and we're a very patient and helpful group (not to mention informative!)

See you online!

Harvey's "Sew Right Sewing Machines"

Serving NY since 1973

Authorized Sales & Service on:

Husqvarna Viking • Bernina

Baby Lock • Janome

And NY's best repairs on all makes!

EMPIRE GUILD MEMBERS

Last Days of Summer Sale

***20% off any non-sale in stock items**

***excludes fabric----expires 9/21/07**

223-20 Union Tpke. Bayside, Queens

718-468-5858

info@sewright.com website www.sewright.com

*offer good with current membership

PATCHWORKART...a quilter's studio

186-13 Union Tpke.

Fresh Meadows, NY 11366

718-454-0249 www.patchworkart.com

FABRIC BLOWOUT

**Buy one yard of fabric and
get a second yard of same fabric FREE**

WITH THIS COUPON

SEPTEMBER BIRTHDAYS



Lois Balletto, Muriel Broderson, Mary Yvonne Bryant, Sandra Cain, Grace Carroll, Claudette Carter, Pearl Chow, Margaret Counihan, Julia Detar, Carolyn Djokoto, Joanne Downes, Laura Fandino-Swedosky, O. Betty Ford, Ursula Foster, Felicia Ingram, Roberta Jacobs, Marilyn Korn, Gail Lefton, Leila Lieberman, Susan Mendoza, Ruth Nobel, Julia Petar, Nancy Rabatin, Constance Ricks, Marilyn Rousseau, J. Royster-Hills, Sandra Samaniego, Didi Schiller, Carolyn Schloupt, Florence Silverman, Mary Louise Smith, Jackie Smyth, Rhona Triggs, Margaret Umansky, Melanie Vaughan, Alyson Vega, and Marian Webber.

CANA
Long Arm Machine Quilting
 With Over 18 Years of
 Experience
 &
 Exceptional Quality...
 "We Are a Name You Can Trust"
Carrie
 516-644-7703



Empire Quilters, Inc. is a non-profit organization founded in 1982 to preserve and promote the tradition, culture, and history of quilt making, and to foster good fellowship among persons interested in the art of quilting in the greater New York area. The guild has a continuing commitment to raising the level of appreciation of quilts among the general public, to using our talents in service to our community, and to the exchanging of our skills, ideas, and visions with one another. NQA chapter 494. Old Chelsea Station, P.O. Box 1293, New York 10113. www.empirequilters.net


the quilt cottage
 fabrics • yarn • gifts
 414 mamaroneck avenue
 mamaroneck, ny 10543
 (914) 777-1333

hours:
 monday - saturday
 10-6
www.quiltcottage.net

distinctive collection of cotton fabrics
 colorful, funky, yarns
 unique assortment of ribbons, swiss laces & trims
 sewing machine repairs
 quilt finishing & restoration

one block south of Metro North (mamaroneck station)
 special orders
 fabric buyers discount card

Directions:
 Hutchinson River Parkway
 Exit 235 or I-95 NYS Thruway
 Exit 18A (Mamaroneck Avenue)
 to Mamaroneck business district.
 1/4 mile from railroad station
 on right-hand side.



(914) 777-1333



STOVER QUALITY QUILTING

All over patterns, Outline, In the Ditch, Marked and Stamped Patterns, plus Combinations

all hand guided

Backings and Battings also available

For free brochure, price list and information, please call 1-800-521-4171 or 573-377-2303

Or write to Stover Quality Quilting, 606 North Ash, Stover, MO 65078

e-mail: Stoversq@advertisnet.com

CELEBRATING over 60 years of Custom Machine Quilting

New E-mail/Web address:

stoverqualityquilting@stovermo.com

www.stoverquilting.com



**Longarm Quilting
Basting Service
Binding - Hand and Machine**

No Rules

Your Batting - No Problem
Your Thread - No Problem
Top Not Flat - No Problem
Top Not Square - No Problem

Little Red Quilt House
(203) 258-9464
www.LRQH.Com

**Any Quilt
Any Condition
We'll Finish It**

TREASURER'S REPORTS

Treasurer's Report 5/17-6/30-07

Income as of 6/30/07	Month	YTD
Bus Trips	\$4,000.00	\$6,368.00
Fundraiser		\$929.50
Interest on Money		
Market		\$195.85
Library Income	\$22.00	\$400.27
Member Boutique		
Membership/Guests	\$4,502.00	\$6,392.00
Monthly Raffles	\$223.00	\$1,436.00
Newsletter Advertising		\$3,713.50
Programs	\$10,000.00	\$10,000.00
Quilto	\$42.50	\$42.50
Share Table	\$119.00	\$874.75
Vendor Sales	\$100.00	\$661.90
Ways and Means		
(Bags, Lanyards, Pins)		\$1,220.00
Workshops	\$75.00	\$2,928.00
Deferred Income		\$3,605.00
Total Income	\$19,083.50	\$38,767.27

Expenses as of 6/30/07	Month	YTD
Donation to Katrina-Habitat		\$200.00
Insurance		\$1,122.00
Library Expense	\$23.98	\$61.57
Miscellaneous		\$367.57
Newsletter Expense	\$703.54	\$3,548.21
Newsletter Mailing	\$301.65	\$1,355.31
Printing and Reproduction		\$63.05
Postage		\$20.92
Post Office Box		\$50.00
Quilt Rack		\$149.00
Rent	\$220.00	\$6,420.00
Speaker	\$200.00	\$2,164.05
Speaker Expenses	\$372.18	\$1,095.50
Stationery		\$204.67
Storage Facility	\$81.00	\$243.00
Trips	\$6,495.16	\$8,982.36
Ways and Means (Pins, Lanyards, Bags)		\$2,420.25
Website	\$43.90	\$307.25
Welcoming Committee		\$45.44
Workshop Expense	\$742.52	\$1,551.23
Workshop Teacher		
Fees	\$175.00	\$2,465.00
Total Expenses	\$9,358.93	\$32,836.38

Current Bank Balance as of 6/30/07	
Quilt Show Checking	\$23,831.07
Guild Checking	\$30,986.30
	\$54,817.37

Treasurer's Report 6/30/07-8/15/07

Beginning Balance	Month	YTD
Interest	\$19.13	\$19.13
Memberships	\$864.00	\$864.00
Newsletter Ads	\$153.00	\$153.00
Misc Show Income	\$90.72	\$90.72
Ways and Means	\$29.00	\$29.00

Total Income	Month	YTD
Total Income	\$1,155.85	\$1,155.85
Guild Expenses	Month	YTD
Postage	\$26.96	\$26.96
Rent	\$7,280.00	\$7,280.00
Storage Facility	\$162.00	\$162.00
Website	\$153.65	\$153.65
Total Expenses	\$7,622.61	\$7,622.61
Balance 8/15/07	\$48,350.61	

FINAL SHOW RECONCILIATION

Empire Quilters 2007 Budget and Final Reconciliation Expenditures

Budget Item	Budget Amount	Actual Spend
Facilities		
Main		
Hall/Amphitheater	\$7,000.00	\$7,000.00
Additional Space	\$1,500.00	\$1,500.00
	\$8,500.00	\$8,500.00
Services		
Security	\$2,270.00	\$3,365.00
Coat Room	\$250.00	
Cleaning	\$450.00	\$600.00
Electrician	\$800.00	
Lighting	\$750.00	\$1,705.00
Projectionist	\$900.00	\$935.00
	\$5,420.00	\$6,605.00
Promotion		
Postcards	\$650.00	\$762.20
Flyers/Rack Cards	\$75.00	\$435.80
Large Postcards	\$350.00	\$338.29
Posters	\$700.00	\$521.60
Mag Listings	\$75.00	
Show Posters	\$300.00	\$391.04
Program Printing	\$6,000.00	\$4,246.21
	\$8,150.00	\$6,695.14

Advertising		
Print	\$1,500.00	
Media	\$250.00	
	\$1,750.00	
Show Judging		
Judges	\$750.00	\$200.00
Space Rental	\$150.00	\$500.00
Ribbons	\$100.00	\$7.68
Judges Expenses	\$500.00	\$210.09
Security		\$480.00
	\$1,500.00	\$1,397.77
Lectures/Demonstrations		
Royalties	\$250.00	
Speaker Fees	\$1,000.00	\$1,550.00
Speaker Costs	\$250.00	\$184.16
Projection Rentals	\$800.00	
	\$2,300.00	\$1,734.16
Signage for Show		
Show Signs	\$200.00	
	\$200.00	
Vendor Costs		
Identification	\$100.00	
Tables		\$222.50
Signs	\$100.00	
	\$200.00	\$222.50
Postage		
Postage	\$800.00	\$611.86
Quilt Show		
Frame Rental	\$500.00	\$500.00
Draping	\$3,200.00	\$3,467.93
Drape Storage		
Bins		\$220.60
White Gloves	\$200.00	\$116.98
Frame		
Pickup/Delivery	\$850.00	\$775.00
Wrist Bands	\$350.00	\$323.26
Lighting Rentals	\$1,000.00	\$612.50
Appraisals		\$530.00
Dowels		\$208.74
Connectors		\$36.00
Signage/Nametags		\$344.16
	\$6,100.00	\$7,135.17
Raffle		
Quilt/Raffles		
Supplies	\$500.00	\$266.78
Raffle Tickets	\$400.00	\$781.92
Raffle Quilt		
Insurance	\$42.00	\$42.00
Raffle		
Drum/Fishbowls		\$307.00
	\$942.00	\$1,397.70
Boutique		
Expenses	\$100.00	\$117.46
Tags	\$50.00	
Boutique		
Commissions		\$1,865.24
	\$150.00	\$1,982.70
Miscellaneous		
Truck/Hand Carts		\$279.04

Storage Facility		\$137.00
Office Supplies		\$585.24
Cash Boxes		\$151.64
Tips		\$350.00
	\$1,500.00	\$1,502.92
Grand Total	\$37,512.00	\$37,784.92
Income	Budget Est.	Act. Income
Sponsors	\$3,250.00	\$3,250.00
Vendor Rentals	\$8,500.00	\$9,625.10
Program Ads	\$2,500.00	\$2,572.00
Appraisals		\$180.00
CD Income		\$535.14
Bus Trips		\$756.00
Door Receipts	\$22,500.00	\$15,481.95
Raffle Quilt	\$7,500.00	\$8,167.00
Other Raffles*	\$1,000.00	\$1,986.00
Members Boutique	\$1,500.00	\$3,238.75
Quilt Submissions	\$2,600.00	\$2,180.00
Start Up Funds	\$13,684.77	\$13,684.77
	\$63,034.77	\$61,656.71
Gross Receipts	\$63,034.77	\$61,656.71
Expenses	\$37,512.00	\$37,784.92
Total	\$25,522.77	\$23,871.79

Meetings are the second Saturday of each month. Meeting dates for the 2007–2008 season are:

Sat Oct 13, 2007 speaker Joan Shay – We’ve Bonded

Sat Nov 10, 2007 speaker Marilyn Belford – Portrait Quilts

Sat Dec 08, 2007 Holiday Fund Raiser

Sat Jan 12, 2008 speaker Mark Lipinski of Quilters Home Magazine

Sat Feb 09, 2008 speaker Pat Yamin – One Patch Scrap Quilts

Sat Mar 08, 2008 Charity Quilting Day

Sat Apr 12, 2008 speaker Sharon Pederson – Sensational Sashiko

Sat May 10, 2008 speaker Barbara Barber – Cat’s Tales and Other Quilts

Sat Jun 14, 2008 speaker Lenora Raikin – African Folklore Embroidery

BOARD MEETING MINUTES ON WEBSITE

Our board meeting minutes are posted on our website at:

WWW.EMPIREQUILTERS.NET They can be found on the Committees page of the website and are in pdf. format. A password is required to open the file.

If you've forgotten the password, e-mail info@empirequilters.net. When your membership is verified, the password will be e-mailed to you. Additionally, the minutes can be perused at our meeting; they are to be found at our membership table.

Gail Lefton, Secretary

PIN EXCHANGE CHALLENGE

Once again our enthusiastic and talented team of **Ligaya Siachongco** and **Jane Broaddus** has come up with a fun project for the guild — a Pin Challenge/Exchange! Start working on your pins to exchange at the **October 13, 2007** meeting! Bring as many pins as you can make — and exchange them for other pins at the meeting. This is a great way to flex those creativity muscles, and to share our talents with other guild members.

You can see examples of the pins that Ligaya and Jane have made on the website by clicking on the **Notices** link.

SHOWS & EVENTS

Folks and Family

Date: August 2 – September 12, 2007

What: Solo quilt exhibit by quilt artist

Laura R. Gadson

Location: Russ Berrie Medical Science

Pavilion, Columbia University,

**1150 St. Nicholas Avenue at 168th Street,
New York City**

Hours: Mon – Fri, 9:00 am – 5:00 pm; Sat 8:00 am – 4:00 pm

Cost: Free to the public

More Information: email Michelle Bishop: harlemneedlearts@verizon.net

Portrait quilts depicting her life Growing up Gadson from family gatherings to the music of an era, Gadson draws inspiration from fond memories of her years growing up in Queens, and from family photos. Cherished memories in fabric allows Gadson to tell family stories and to create a textile legacy for future generations. For more information about Laura R. Gadson visit her website/blog:

<http://gadsongallery.blogspot.com>

A Heritage of Quilts

Date: Sat – Sun, September 29 – 30, 2007

What: Quilt Show Celebrating 25 years

Presented By: Garden State Quilters

Location: Westfield Armory, 500 Rahway Ave, Westfield, New Jersey

Hours: Sat 10:00 am – 5:00 pm; Sun: 10:00 am – 4:00 pm

Cost: \$8.00

More Information: Garden State Quilters: www.gardenstatequilters.com

Raffle quilt, Live Auction, Juried Show, Ribbons Awarded, Merchant Mall, Vendors, Door Prizes, Demonstrations, Boutique, Food & Beverages Available, Free Parking.

Dutchess Heritage Quilt Show XIII

Date: Sat – Sun, October 6 – 7, 2007

What: biennial quilt show

Sponsored by: Dutchess Heritage Quilt Show Committee and the Dutchess Community College Foundation

Location: Dutchess Community College, Poughkeepsie, New York

Hours: 10:00 am – 5:00 pm

Cost: \$5.00 (there is a \$1.00 off coupon available on their website)

More Information: www.dhqiltshow.org

Workshops follow the quilt show on October 7 – 8, 2007.

Harvest of Quilts Show and Sale XI
Date: Sat – Sun, October 6 – 7, 2007
Presented By: Jersey Shore Quilters of St. Peter's Church
Location: St. Peter's School Auditorium, 406 Forman Ave & Route 35 North, Point Pleasant Beach, New Jersey
Hours: Sat 10:00 am – 4:00 p.m. and Sun 10:00 am – 3:00 p.m.
Cost: \$5.00

More Information: Jersey Shore Quilters
 Website: www.jerseyshorequilters.org or call Laura Kushner: 732-370-8092 or Ginny Moe: 732-701-0292

Featuring the work of local quilter, Jesse Cantrell, and a host of others. The show will include quilting demonstrations, a raffle quilt, silent auction, vendors, and quilt appraisals by Karen L. Denver.

For more show info, go to the Empire website and click on the **Shows & Events** link.

NEWSLETTER DEADLINE

The deadline for the October, 2007 newsletter is: **Wednesday, September 12th**. Please send information to: Linda Lee Kelly, 950 Oaks Drive, Franklin Square, NY 11010 or e-mail: LKELLY20@OPTONLINE.NET

WORKSHOP REGISTRATION POLICY

Payment in full for workshops is required by the date of the workshop. Members who cancel up to 7 days prior to the workshop will be refunded in full. If you cancel after that, refunds will be made **only** if a replacement student can be found.

2007 - 2008 OFFICERS AND CHAIRS		
President:	Jennifer Bigelow	203-323-5138
First Vice Pres:	Paula Kenny	212-982-8043
Second Vice Pres:	Lauren Dieterich	212-674-6174
Treasurer:	Kitty Squire	718-956-3005
Secretary:	Gail Lefton	718-762-5499
Block of the Month:	Anna Krassy	212-242-3253
Bus Trips:	Aleeda Crawley	973-313-0844
By-Laws:	Jennifer Bigelow	203-323-5138
Donations Coord:	Diane Harris	718-445-0482
Focus Groups:	Anna Faustino	201-246-1142
History/Archives:	Anna Foss Dess Kelley	718-833-1490 646-593-1223
Library:	Sylvia Hughes Tina Barth Marilyn Korn Susan Stauber Ann Strauss	212-665-5036 212-691-3108 212-206-7203 212-782-9512 718-423-2825
MAQNET	Anna Faustino Jennifer Bigelow	201-246-1142 203-323-5138
Membership:	Kitty Squire	718-956-3005
Newsletter Advert.	Betty Chen	718-544-0670
Newsletter Editor:	Linda Lee Kelly	516-352-2268
News. Mailing:	Susan Louis	718-658-8352
Nominating:	<i>to be filled</i>	
NQA Coordinator:	Beth Pile	631-286-5532
Programs:	Lee Ebs	212-242-3438
Quilter / Month:	Debra J. Levin	212-832-8575
Raffle:	Nancy Castel Rita Reide Alicia Cruz	212-362-4306 718-829-3544 718-325-8508
Service:	Denise Walsh-Horowitz Pamela Leonard Wexler Joan Hellmann	718-454-1944 212-662-4237 718-229-0017
Share Table:	Veronique Milliez Anna Krassy	718-534-6604 212-242-3253
Show & Tell:	Claire Leffel Carole Hoffman	212-662-4650 914-834-8173
Sunshine:	Beth Pile	631-286-5532
2009 Quilt Show Co-Chairs:	Larry Gifford Paula Kenney Kitty Squire	212-717-0892 212-982-8043 718-956-3005
Ways & Means:	Larry Gifford	212-717-0892
Website:	Cindy Russell	212-414-9201
Welcoming:	Beth Pile	631-286-5532
Workshops:	Mary Butler	212-662-7771

“WELCOME BACK”