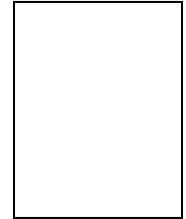




Old Chelsea Station
P.O. Box 1293
New York, NY 10113
WWW.EMPIREQUILTERS.NET



FIRST CLASS MAIL

“HAPPY HOLIDAY’S”

DATED MATERIAL
Please Deliver Immediately

NEXT MEETING: SATURDAY, DECEMBER 9, 2006
11 AM TO 12 PM – BOARD MEETING
1 PM TO 5 PM – GENERAL MEETING
Fashion Institute of Technology (F.I.T.)
David Dubinsky Center, 8th Floor
West 27th Street & 8th Avenue, NYC
GUEST FEE \$5.00

PROGRAM: “HOLLIDAY GATHERING”
VENDOR: “FUNDRAISER FABRIC SALE”
QUILTER OF THE MONTH: NONE
WORKSHOP: “WORKSHOP OPEN HOUSE”

PROGRAM

HOLIDAY PARTY

This year’s holiday fundraiser will be an enormous fabric/notions/book sale. Thanks to a generous donation from Michael Clifford, we are in the unique position to offer the membership new and unusual fabrics, assorted notions and books at **GREAT PRICES**. There will be tables set up and fabrics will be segregated by price.

The materials are priced to sell, so **PLEASE, NO HAGGLING**. This is the last Fundraiser before our show. Please bring tote bags to carry

away all your bargains and remember to bring lots of money.

Please remember there will be no **VENDOR, RAFFLE, or SHARE TABLE**.

We are also having a baked goods table. Please bring in your favorite holiday goodies so we may also sample your other talents. Last year’s bake table was incredible-and mighty tasty.

The guild will provide cold drinks at no cost to you.

Volunteers Needed for December Party/Fundraiser - I am in desperate need of two volunteers to assist with the baked goods and soda. You would need to set things up and keep it neat and attractive. If you are interested please call or e-mail me.

Paula Kenney PKKenney44@aol.com
212-982-8043

In addition to the fabric Fundraiser and Holiday bake table, we will be working on making the ribbons for our show.

Our very own Natalie Garfinkel, the Queen of Glitz, designed and made beautiful ribbons for a previous show. For our twenty-fifth anniversary show in March, we asked her to create a silver bound version for our winners. At the December meeting, we are asking members to help sew up the 30 odd ribbons needed to award all categories. **Kits will be provided.** Anyone ready to sew needs to bring needles, scissors and a thimble if you use one. As you know, this is a party meeting with a bake exchange and fabric sale. But a little sewing on the side lets quilters indulge in an ongoing passion. See you in December.

WORKSHOP

Member Open House – Sunday, December 10, 2006. 343 8th Ave @ 27th St. 9:30 AM - 4 PM Suggested fee \$10 to offset room cost.

As all of you who have ever taken a workshop know, our space is bright and holds a number of tables with plenty of electric outlets. You are welcome to join fellow members to use the facilities to assemble a quilt, make holiday gifts from start to finish or otherwise quilt up a storm. Someone will bring refreshments. The fellowship is lively, tip-ful and generally a lot of fun. Join us.

There will be no workshop in January.

Workshop: Picture Perfect with Tina Marie Rey - Sunday, February 11, 2007 9:30 AM – 4:00 PM - 343 8th Ave @ 27th St. \$50

Spend the day with fiber artist Tina Marie Rey who will concentrate on creating unique abstract photograph quilts. She will show how to look inward to translate a photograph into a creative and fun quilt! This workshop is a great way to break into art quilting.

This is a class is for beginner quilters as well as those with experience. Tina Marie insists this is a *no rules* class.

To learn more about Tina Marie Rey, visit her website: www.tmrey.com, or her blog: <http://tmrey.blogspot.com>.

Supply list to come.

There will be no workshops in March and April.

FUTURE WORKSHOPS

The following workshops are being planned for later in the Empire season. More details, times and supply info will follow as they become available.

May 5 Saturday (Not a meeting weekend) By popular demand, **Anna Faustino** will teach us her curved weaving method. **Kit to be supplied.** No sewing machine needed.

May 12 Saturday Meeting morning 9 - 12 **Linda Prioleau** will demonstrate her fairy cottage and how to build one yourself.

June 10 Sunday **Lorraine Keller** will explain her Fold 'n Fold method for making gifts, ornaments and decorations for larger pieces.

Any questions or if you are interested in the December Open House or February workshop, contact **Mary Butler** at 212-662-7771 or e-mail her at citymary@aol.com.

SHOW AND TELL

There **WILL** be Show & Tell in December. We are asking people to bring holiday themed pieces.

We saw lots of variety at the November Show & Tell. Our members certainly are creative. Thank you to the following people for sharing their work.

Julie Fei-Fan Balzer (*Dance Like No One is Watching, Quilted Necklace and Quilted Scarf*), Alice Brody (*Southwest Themed Quilt*), Anna Faustino (*Three Graces*), Ann Foss (*2 decorated caps*), Marge Geary (*2 batik quilt tops*), Joan Hellmann (*Vest purchased recently in Uzbekistan*), Marie Krauss (*Trip Around the World, Geometric Stained Glass, and Untitled*), Debra Levin (*Stacey's Peppermint Stick Quilt*), Gardy Nadler (*Oriental Magic*), Fran Riede (*Sampler*), Barbara Rose (*Triple Irish Chain*), Anna Sinitsyna (*Summer Flowers and Flowers of Paradise*), Rhona Triggs (*Zebra batik quilt*),

Pictures of these works are on the guild website. Look for the **Show & Tell** link. There *will* be a Show & Tell time at the December meeting. Bring your holiday Show & Tell items.

PRESIDENT'S MESSAGE

Hello fellow Empire Quilters. I had a great time at our meeting – Linda Cantrell was so engaging and funny that the time just seemed to fly. I was glad to hear so many members say how much they enjoyed the program. I attended her workshop the next day and the laughter continued even as we learned some new techniques for applique. I kept thinking about what I'd like to do next.

Then it hit me... Do you realize that we have only 4 months until our show - - and only 2 months until we will submit our entries?

I keep thinking there's lots of time left to finish my quilt, and my challenge block, and maybe

make some things for the member boutique. But it may be that just like at Thanksgiving, my "appetite" could exceed my capacity. Does anybody else feel this way?

As much as I want to do myself, there's so much the Guild needs to do to prepare for the show. As you all know, there's a core team of members who have been working on the Show logistics. Soon we'll be reaching out to the rest of you to help – many of you have already signed up to assist. For some tasks we'll be looking for help prior to the show – but most activity will be on the show weekend. I'd like to remind those who will submit quilts to the show that there's a requirement to volunteer at least 4 hours. I'd like to ask even those who don't submit quilts to volunteer as well, to help ensure that this show – a celebration of the 25th anniversary of our Guild – is a show we'll all proudly and fondly remember in years to come.

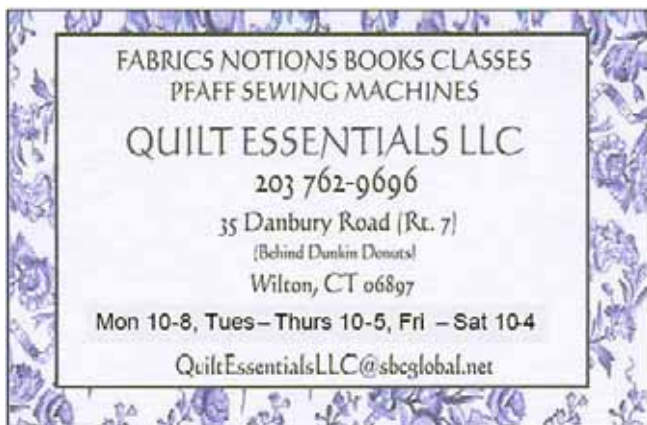
Even as I ask for your support for this event, I want to ask again for each of you to consider volunteering for one of the several positions opening up in our next season. This organization runs on volunteers and a number of people who have generously donated their time over the last 2 or many more years are stepping down. Please don't just sit back and figure that someone else will step up and all the positions will be filled. I know that some will think 'I don't have time' or 'I can't do that' (whatever 'that' is). I felt that way when I first volunteered to do the newsletter advertising - - and believe me I had plenty of doubts about being President! In each situation there were certainly challenges and times I felt unsure and anxious. But, also, in each case, I found that others in the Guild, both on the Board and not, helped me when I asked, and encouraged me when I felt unsure. By volunteering, I have met many members I might not have otherwise known, and have expanded my circle of friends. If you want to learn more about what work is involved in any of the open volunteer positions, please contact me or Sylvia Hughes; and remember, any position can be shared – making

the work lighter and more fun. These are the positions or committees for which we're looking for volunteers:

Second Vice President
Historian & Archivist
Membership
Newsletter Advertising
Nominating - we need a team to start work now to fill these positions
Programs
Quilter of the Month
Raffle
Service Committee
Ways & Means (need Chair)

Happy Thanksgiving to all - I look forward to Seeing you in December. – **Jennifer**

Please note that all Board positions can be found on the last page of the newsletter and on the Contact page on the website.



Empire members receive a 10% discount.

DECEMBER BIRTHDAYS

Jennifer Gregory, Judy Haveson, Judy Shapiro, Marcia Regen, Nancy Gulisano, Lethia Johnson, Cindy Russell, Pamela Wexler, Mildred Castro, Mary Butler, Mary Anne Ciccotelli, Hetty Doldron, Pauline Myers, Paulette Myers, Sheila Molitz, Mary Jane Van Loon, Helen Supcoff, Jane Pearlson, Susan Hammer, Sara E. Niego, Lynette Baker, Sherry-Dawn Brown, Wendy O'Flaherty, Betty Chen, Freida Hoyett, Margaretta Richards, Lee Ebs.

FOR SALE BERNINA ARTISTA 180E

Purchased in Houston November, 2001. Only reason I am selling:
I purchased a Bernina 640 w/BSR last year and have been using it ever since.
Embroidery Unit NEVER used. Includes 4 bobbins, 8 presser feet, carrier, slide-on-table, embroidery unit w/CDs. Just serviced.
Asking \$1800.
Call Sheila Molitz 212-586-5259 if interested.

LIBRARY NEWS

Good News for those members who need more time to finish a project: you will not have to return any borrowed books until the January, 2007 meeting. Because of the Christmas Member's Program, there will be no library in December. However, fines will be collected beginning in January, for any books that are not returned on time. To avoid a fine you may call anyone on the committee to extend the book loan.

Once again, we thank Melanie Vaughn for her generous donation of books. Melanie is a long-time member who can't always get to a meeting. She designs both quilts and quilting patterns and is a wonderful hand quilter. In her spare time she acts in supporting roles on and off Broadway.

The Book Sale is tentatively scheduled for the February meeting, and donations can be given in January. Our magazine sales are still very popular, so recycle them next year.

A tip for the holidays: when making a child size quilt, make a mini-quilt in the same colors and pattern for a favorite teddy bear or doll. When the quilt has been loved to oblivion the small one will be a souvenir, since teddies are very careful with their quilts.

BERNINA 
AUTHORIZED DEALER

FABRIC
CLASSES, SUPPLIES
KITS



**THE QUILT
SHOP**

5 PADANARAM RD.-RT. 37
DANBURY, CT 06811
WORTH THE TRIP

GINNY MURPHY
TEL: 203-743-0543
wamquilt@aol.com

Empire members receive a 10% discount.

Harvey's "Sew Right Sewing Machines"

Now Open Sundays 11-4

Authorized Sales & Service on:

Husqvarna Viking • Baby Lock

Bernina • Elna • Janome

And NY's best repairs on all
makes!

Empire Guild Member Savings

***Always Save at least 10%**

on All Sewing Machine Repairs

and all regular priced items

223-20 Union Tpke. Bayside,
Queens

718-468-5858

info@sewright.com website
www.sewright.com

*offer good with current membership

NEWSLETTER E-MAILING

How would you like to get your newsletter sooner and in color? If this intrigues you, just sign up to receive it by email by contacting Kitty Squire at kesquilts33@msn.com. You will also be saving a few trees and some money for the Guild. Join with us as we move into the 21st Century! So far, we have 28 brave souls who are making this journey.

EMPIRE LOGO ITEMS FOR SALE

The guild tote bags, pins and lanyards are in. Tote Bag \$20, Pin \$5 and Lanyard \$4. There is an order form on the website.



WINTER WARM:

beautiful new quilts by members of Quilters of Color

Hudson Guild
Hudson Guild Elliott Center
441 W. 26th Street (between 9th and 10th
Avenues) NY, NY 10001

Continued on page 6.

Opening reception 6-8 PM	Dec. 15, 2006
Meet the Artists Talk 3:30 -6 PM	Jan. 12, 2007

The Artists: **JANIE ALSTON, LYNETTE BAKER, EDWARD BOSTICK, ALLEDA CRAWLEY, MARIELA IRWIN, JULIANNA KALLOO, MARILYN KORN, RITA REID, WINIFRED SANDERS, RHONA TRIGGS, TERESA VEGA.**

For those who love to knit and crochet, **Save the Children** is collecting caps for newborns. Their site www.savethechildren.org has all the information regarding this and also some patterns for knitting and crocheting the caps.

They are collecting them by January 2, 2007 and will send them to the President in Washington DC in January.
Check out their website for more information

BOARD MEETING MINUTES ON WEBSITE

Our board meeting minutes are posted on our website at:

WWW.EMPIREQUILTERS.NET They can be found on the Committees page of the website and are in pdf. format. A password is required to open the file.

If you've forgotten the password, e-mail info@empirequilters.net. When your membership is verified, the password will be e-mailed to you. Additionally, the minutes can be perused at our meeting; they are to be found at our membership table.

Gail Lefton, Secretary

QUILT SHOW REPORT

Show Income	Month	YTD
Vendor Deposits	\$ 212.50	\$ 1,037.50
Raffle Sales	\$ 1,043.00	\$ 1,293.00
Totals	\$ 1,255.50	\$ 2,330.50

Expenses	Month	YTD
Office Supplies	\$ 61.59	\$ 61.59
Postage	\$ 250.99	\$ 250.99
Promo Printing	\$ 545.22	\$ 652.88
Raffle Quilt Fabric	\$ 79.96	
Raffle Tkt Printing		\$ 478.01
Vendor Refund		\$ 600.00
Totals	\$ 937.76	\$ 2,043.47

Balance as of
11/15/06 \$11,937.34

2006 – 2007 Guild Meeting Dates

(All dates are the second Saturday of the month):

Sat, Dec 09, 2006 – Holiday Gathering
Sat, Jan 13, 2007 – Welsh Whole Cloth Quilts
W/ Cassandra Thoreson
Sat, Feb 10, 2007 – Using Your Camera in
Quilting w/ Tina Marie Rey
Sat, Mar10, 2007 – Charity Quilt Day
 Sat, Apr 14, 2007 – TBD
 Sat, May12, 2007 – TBD
Sat, Jun 09, 2007 – 30 Traditional Quilts and
Their History– Margot Cohen
 Watch the website for information about programs and workshops.

VOLUNTEER NEEDED

We need a volunteer to pick up Cassandra Thoreson, our speaker, in January. She will be bringing a number of original Welsh Quilts for us to enjoy and needs to come by car, rather than by subway. If we are unable to get a volunteer to drive her, we will arrange a car service for her, but would like to get a volunteer to accompany her and help with the quilts. If you are willing, please contact **Kitty Squire** at Kesquilts33@msn.com.

We are happy to introduce
our pretty little fabric shop...

purl patchwork

a new source for all your quilting needs!

We feature cheerful vintage prints,
delicate historical reproduction fabrics,
beautiful contemporary designs,
and a rainbow of solid colors.

Purl Patchwork is at 147 Sullivan Street,
in New York City, between Prince and Houston.

Call us at 212-420-8798

And while you're in the area,
don't forget to visit our knitting store, Purl,
just down the street at 137 Sullivan Street.

Visit us online at

*purl*soho.com

STORE HOURS

MONDAY - FRIDAY 12-7 SATURDAY + SUNDAY 12-6

AQN'S FAT QUARTER FRENZY !!!

**ALL FAT QUARTERS ARE ON SALE BUY 1 GET 1 FREE !!!
That is 50 – 70 % off!**

Great selection of top designer fabrics! Hundreds of colors and prints available...Novelty, Batiks, Metallics, Home Spuns, Holiday Prints, 1930 Repo's, Hand Dyed, Thimbleberries...and so much more!!! Why are we doing this? To make room for all the new 2007 fabric that is coming in !!!
Don't miss out on this great opportunity to build your stash!
SALES ENDS DEC 31

A Wonderful Selection of Polar Fleece Has Just Arrived!!!

A QUILTER'S NOTION

59-08 WOODSIDE AVE , WOODSIDE, NY 11377 718-424-4691

**ALL OF US HERE WISH YOU AND YOUR FAMILY A HAPPY AND
HEALTHY HOLIDAY & A JOYOUS NEW YEAR !**

Raffle Committee

November was our most successful Raffle ever! Thank you to these generous members: Sylvia Hughes, Melanie Vaughan, Margaret Morris, Sylvia Zeveloff, Beth Pile, Paula Kenney, Sheila Molitz, Sandra Chin, Jennifer Bigelow, Diane Rubenstein, Stefanie Sheehan, Anna Lega and Eleaine Manceli. A special THANK YOU to Rhona Triggs for her wonderful beads and jewelry findings. Thank you everyone for your generous support!

Pat, Anita and JoAnn



Little Red Quilt House
(203) 258-9464
www.LRQH.Com

Longarm Quilting
Basting Service
Binding - Hand and Machine

No Rules

Your Batting - No Problem
Your Thread - No Problem
Top Not Flat - No Problem
Top Not Square - No Problem

Any Quilt
Any Condition
We'll Finish It

FOCUS GROUPS – JANUARY

Members Boutique'

Nov. 11, we had a very successful focus group. We had 15 members sign up to sell items at our quilt show. Gail and I will be contributing too, so we have a total of 17 members. If you are interested in signing up, see me in Dec. or call or e-mail me. You can pick a selling number and will be given sales tags. Information and details about the boutique is in your show packet. It is the pink paper. So far the Boutique looks like it is going to be very successful. Come and join the fun. See below for next meeting info:

Members' Boutique Focus Group

Date: Saturday, January 13, 2007

Time: Approx 3:30 – 5:00 pm

(After the general meeting)

Group Leaders: Beth Pile and Gail Lefton

Cost: There is no cost, but bring your ideas and most of all, your enthusiasm.

Our last focus group will be for the final details for the boutique and sign up for working times at the show. I will accept donated orphan blocks at anytime. All other items need to be turned in at the show in March. If you have

questions, please call or e-mail **Beth Pile @ 1-631-286-5532** or bpile@optonline.net. or Gail Lefton at 1-718-762-5499.

Hand Applique using the Needle-turn Method

Date: Rescheduled Date: January 13, 2006

Time: 9:30 – 12:30) prior to the general meeting).

Group Leader: Shirley Levine

This method of hand appliqué allows you to make complex, layered appliqué designs - like flowers. Participants will work on a single small appliqué piece to learn the technique, including inside and outside curves. Please bring two 6 inch squares of fabric, a fabric marker, needles (appliqué or sharps), thread to match one of the pieces of fabric, and scissors.

Shirley Levine 212-348-0948 if you have any other questions - or email me at

Shirley@queso.com.

SUNSHINE/WELCOMING

We are having a great year with many guest and new members joining Empire. The new members in November are Shirley Clark, Helen Beall, Kathleen A. Beirne, Lorraine A. Macia, Suzie Elliott, Julie Fei-Fan Balzer. The table for

guests and new members is going to have to expanded. I now will reserve two tables. I hope ladies and gentlemen, if you see a new member or guest that you will welcome them to sit at your table. If there is no space, direct them to the chairs in front of the speaker area. I think we should all be friendly and helpful to new comers. We were all new once. We want all those interested in Empire to come back. Any suggestions or comments call **Beth at 1-631-286-5531** or e-mail me at bpile@optonline.net.

JANUARY PROGRAM

Welsh whole cloth quilts have a fascinating tradition that includes quilts made by home sewers for personal use as well as those made by itinerant quilt makers. Both visually stunning and humble, they have connections to similar styles of quilt making in northern England, but they have a freedom of design that is all their own. Quilted with large stitches in bold patterns, the thick and very warm wool-filled quilts were originally made for private use, but in the first third of the 20th century, they began to be produced for sale as a source of income for local women-mostly in economically depressed mining communities. Throwing the fancy, white, delicately stitched whole cloth quilting traditions that most Americans are familiar with on its head, their spontaneity and undeniably striking designs stand the test of time. They have a lot to teach us about beauty and perfection, as well as history. Come Join us for a lecture by Cassandra Thoreson.

PRESIDENT'S CHALLENGE

This is a reprint of the President's Challenge that was part of the Quilt Show guidelines printed in the June, 2006 newsletter. A copy of the guidelines is on the website under the "2007 Show" link. Go to the Quilt Entry page. **President's Challenge Quilt**

A number of people have requested that this show include a challenge to the members. But few specific ideas have been suggested. My challenge to you is inspired in part by our Raffle Quilt, and all the lovely NY Beauty Blocks, but in larger part by who we all are, where we all live, and why our ancestors and relatives chose to come to America. Good luck - and I hope you have fun with this

Subject: Liberty – and what it means to you to be living in New York City, a most important entry point for the millions of immigrants that make this city and this country (and this guild) as wonderful and exciting as they are

Size: not to exceed a 'fat quarter' in size – that is 18 inches by 22 inches

Media – any you choose; remember to put a sleeve on the back to hang.

2007 QUILT SHOW COMMITTEES

General Show Chairman:

Larry Gifford
444 East 84th Street, Apt 7E
New York, NY 10028
212-717-0892

Financial: Kitty Squire 718-956-3005

Facilities Set up & Take Down: Michael Greenberg
646-638-2826

Promotion & Marketing: Pat Decker
Anita Duncan 212-889-2067

Group Sales: Anna Foss, Joanne Downes
Janice Jenicek 212-254-0651

Press & Publicity: John Kubinieć 212-307-9073

Vendors: Leila Lieberman 212-662-1575, Larry Gifford (above)

Raffle Quilt: Paula Kenney 212-982-8043

Speakers & Classes: Barbara Hull 718-229-4895,
Mary Butler 212-662-7771

Quilt Judges & Judging: Susan Louis 718-658-8352
Judy Shapiro 212-666-1480

Volunteer Coordination: Leila Lieberman 212-662-1575

Members Boutique: Beth Pile 631-286-5532,
Gail Lefton 718-762-5499

THE CITY QUILTER®



For All Your Quilting Needs

133 West 25th Street
212-807-0390
www.cityquilter.com

Tuesday - Friday, 11 to 7
Saturday, 10 to 6
Sunday, 11 to 5

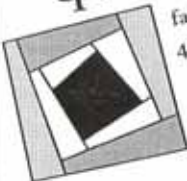
Guild Members
receive a 10% discount

For that quilter on your
list, check out our
great selection of gifts

Our best holiday
wishes to all our
quilting friends!

We're closed Dec. 24,
25, 31, & Jan. 1

the
quilt cottage



fabrics • yarn • gifts
414 mamaroneck avenue
mamaroneck, ny 10543
(914) 777-1333

one block south of
Metro North
(mamaroneck station)

Directions:
Hutchinson River Parkway
Exit 23S or I-95 NYS Thruway
Exit 18A (Mamaroneck Avenue)
to Mamaroneck business district.
1/4 mile from railroad station
on right-hand side.

distinctive collection of
cotton fabrics

unique assortment
of
ribbons,
swiss laces
&
trims

special
orders

fabric buyers discount card

colorful,
funky,
yarns



sewing machine
repairs

quilt finishing
&
restoration

hours:
monday - saturday
10-6
www.quiltcottage.net



Treasurer's Report 10/19 - 11/15			
Income as of 11/15/06	Month	Y-T-D	YTD
Bus Trips	\$ 210.00	\$ 898.00	\$ 1,108.00
Interest on Money Market	\$ 20.62	\$ 73.09	\$ 93.71
Library Income		\$ 51.10	\$ 51.10
Member Boutique			\$ -
Membership/Guests	\$ 760.00	\$ 4,680.00	\$ 5,440.00
Monthly Raffles	\$ 221.00	\$ 399.00	\$ 620.00
Newsletter Advertising	\$ 1,821.00	\$ 1,836.50	\$ 3,657.50
Share Table	\$ 84.00	\$ 213.00	\$ 297.00
Vendor Sales	\$ 164.90		\$ 164.90
Ways and Means (Bags, Lanyards, Pins)	\$ 184.00	\$ 735.00	\$ 919.00
Workshops	\$ 650.00	\$ 570.00	\$ 1,220.00
Deferred Income		\$ 3,605.00	\$ 3,605.00
			\$ -
Total Income	\$ 4,115.52	\$ 13,060.69	\$ 17,176.21
Expenses as of 11/15/06	Month	Y-T-D	YTD
Donation to Katrina-Habitat		\$ 200.00	\$ 200.00
Insurance		\$ 1,122.00	\$ 1,122.00
Miscellaneous		\$ 153.10	\$ 153.10
Newsletter Expense	\$ 338.05	\$ 695.51	\$ 1,033.56
Newsletter Mailing	\$ 226.20	\$ 109.20	\$ 335.40
Printing and Reproduction	\$ 13.56		\$ 13.56
Postage	\$ 8.67		\$ 8.67
Post Office Box		\$ 50.00	\$ 50.00
Quilt Rack		\$ 149.00	\$ 149.00
Rent		\$ 2,500.00	\$ 2,500.00
Speaker	\$ 250.00	\$ 700.00	\$ 950.00
Speaker Expenses	\$ 224.57	\$ 319.50	\$ 544.07
Stationery			\$ -
Trips	\$ 858.50	\$ 250.00	\$ 1,108.50
Ways and Means (Pins, Lanyards, Bags)		\$ 2,420.25	\$ 2,420.25
Website		\$ 131.65	\$ 131.65
Welcoming Committee	\$ 45.44		\$ 45.44
Workshop Expense	\$ 475.71	\$ 300.00	\$ 775.71
Workshop Teacher Fees	\$ 500.00	\$ 650.00	\$ 1,150.00
			\$ -
Total Expenses	\$ 2,940.70	\$ 9,750.21	\$ 12,690.91
Current Bank Balance			
as of 11/15/06			
Quilt Show Checking	\$ 11,937.37		
Guild Checking	\$ 21,732.50		
	\$ 33,669.87		

2007 QUILT SHOW ANNOUNCEMENTS

We have a new person in charge of the Group Sales / Admissions for the show. Her name is Anna Foss. She is really enthusiastic, and hopes to attract groups from various guilds around the area. At the general meeting she announced that she wants the names/contact info for other guilds around the area, so we can invite them to our 2007 Quilt Show.

We are also accepting advertising for the show program. If anyone knows of someone who would like to advertise in the 2007 Show program, please contact a member of the Show Committee. Contact list is on page 10 of the newsletter or on the Contact page under the 2007 Show link on the website.

MEMBERSHIP DIRECTORY

The current membership directory is inserted in this month's newsletter. Please check your information carefully to be sure it is correct. Members use this directory when they need to contact each other during the year.

If your information needs to be updated at any time, please contact **Kitty Squire at 718-956-3005** or kesquilts33@msn.com.

If you need a new copy, you must request it from Kitty Squire as this will not be put on the website for downloading.

SCRAP TABLE

Just a reminder that there will be NO scrap table for December. Please save your donations for January. We would like to thank all the members who have so generously donated to the scrap table over the past months. This is a great way for the guild to raise money for our show and other activities.

Thank you, **Veronique Milliez and Anna Krassy.**



STOVER QUALITY QUILTING

All over patterns, Outline, In the Ditch, Marked and Stamped Patterns, plus Combinations

all hand guided

Backings and Battings also available

For free brochure, price list and information, please call 1-800-521-4171 or 573-377-2303

Or write to Stover Quality Quilting, 606 North Ash, Stover, MO 65078

e-mail: Stoversq@advertisnet.com

CELEBRATING over 60 years of Custom Machine Quilting

SHOWS & EVENTS

9/11 National Tribute Quilt

Dates: On continuous view

Cost: Museum entrance fee: \$9.00 (\$7.00

seniors). Free admission Fridays 5:30 – 7:30.

Location: American Folk Art Museum, Lincoln Center Branch, 2 Lincoln Square (Columbus Avenue between 65th and 66th Streets), New York City

More Information: See the American Folk Art Museum's Website: www.folkartmuseum.org

Midwestern Amish Quilts

Date: On continuous view

Location: American Folk Art Museum, Lincoln Center Branch, 2 Lincoln Square (Columbus Avenue between 65th and 66th Streets), New York City

Cost: Museum entrance fee: \$9.00 (\$7.00 seniors). Free admission Fridays 5:30 – 7:30.
 More Information: www.folkartmuseum.org.

Syncopated Threads: Feel the Rhythm, See the Music

**Dates: Three Sunday afternoons:
 Sun Nov 26, 2006, Sun Dec 10, 2006 & Sun Jan 14, 2007 (1:00 pm – 5:00 pm)**

What: Works by Harlem Girls Quilting Circle
 Presented By: Strivers Gardens Gallery
 Location: Strivers Gardens Gallery, 300 West 135th Street, New York City

Cost: Free
 More Information: call 212-491-8581 or email harlemneedlearts@verizon.net.

Urban Cloth

Date: December 14, 2006 – January 19, 2007

What: Group exhibition by members of the Manhattan Quilter Guild
 Location: Durst Lobby Gallery, 1155 6th Ave [Avenue of the Americas], between 44th and 44th streets, New York City
 Hours: Monday – Friday, 8:00 am – 6:00 pm
 Cost: Free to the public
 More Information: www.quiltart.com/metro

The Quilt Fest of New Jersey

Date: Thu – Sun, March 1 – 4, 2007
 Presented by: Mancuso Show Management
 Location: Garden State Exhibit Center, Somerset, New Jersey
 More Information: www.quiltfest.com

NEWSLETTER DEADLINE

The deadline for the January, 2007 newsletter is: **Wednesday, December 13th**. Please send information to: Linda Lee Kelly, 950 Oaks Drive, Franklin Square, NY 11010 or e-mail: LKELLY20@OPTONLINE.NET

WORKSHOP REGISTRATION POLICY

Payment in full for workshops is required by the date of the workshop. Members who cancel up to 7 days prior to the workshop will be refunded in full. If you cancel after that, refunds will be made **only** if a replacement student can be found.

2005 -2006 OFFICERS AND CHAIRS

President:	Jennifer Bigelow (203) 323-5138
First Vice Pres:	Marilyn Korn (212) 206-7203
Second Vice Pres:	Michael Greenberg (646) 638-2826
Treasurer:	Kitty Squire (718) 956-3005
Secretary:	Gail Lefton (718) 762-5499 **
Block of the Month:	Anna Krassy 212-242-3253 **
Bus Trips:	Aleeda Crawley (973) 313-0844 ** Sylvia Hughes (212) 665-5036 **
By-Laws:	Jennifer Bigelow (203) 323-5138
Donations Coord:	Diane Harris (718) 712-4153 **
Focus Groups:	Anna Faustino (201) 246-1142 **
History/Archives:	<i>to be filled ...</i>
Library:	Sylvia Hughes (212)-665-5036 Tina Barth (212) 691-3108 Pearl Chow (718) 263-5483 Regina Nordquist (212) 740-3615
Membership:	Emma Green (718) 723-8405 Maggie Williamson (718) 798-3692
Newsletter. Advert.	Cynthia Spurles (718) 545-4406
Newsletter Editor:	Linda Lee Kelly (516) 352-2268
Newsletter Mailing:	Susan Louis (718) 658-8352
Nominating:	Sylvia Hughes (212) 665-5036
NQA Coordinator:	Beth Pile(631) 286-5532
Programs:	Barbara Hull (718) 229-4895
Quilter / Month:	Debra J. Levin (212) 832-8575 **
Raffle:	Pat Decker (718) 544-2034 JoAnn Montalbano (516) 770-3656 Anita Duncan (212) 889-2067
Service:	Pamela Leonard Wexler (212) 662-4237** Alice Oberstein (718) 591-4639 Marion Webber (718) 276-3852
Share Table:	Veronique Milliez (212) 534-6604 Anna Krassy (212) 242-3253
Show & Tell:	Sylvia Hughes (212) 665-5036
Sunshine:	Beth Pile (631) 286-5532
2007 Quilt Show:	Larry Gifford (212) 717-0892
Ways & Means:	Paula Kenney (212) 982-8043 Susan Stauber (212) 567-7573 **
Website:	Cindy Russell (212) 414-9201
Welcoming:	Beth Pile (631) 286-5532
Workshops:	Mary Butler (212) 662-7771

**** New Board Members**