

FIRST CLASS MAIL

**Old Chelsea Station
P.O. Box 1293
New York, NY 10113
WWW.EMPIREQUILTERS.NET**

**DATED MATERIAL
Please Deliver Immediately**

**NEXT MEETING: OCTOBER, 14, 2006
11 AM TO 12 PM – BOARD MEETING
1 PM TO 5 PM – GENERAL MEETING
Fashion Institute of Technology (F.I.T.)
David Dubinsky Center, 8th Floor
West 27th Street & 8th Avenue, NYC
GUEST FEE \$5.00**

**PROGRAM: “KENTE: CLOTH OF THE
ASANTE KINGS” WITH DR. HARRIET SCHIFFER**

VENDOR: QUILT ESSENTIALS

QUILTER OF THE MONTH: PAM LEONARD WEXLER

**WORKSHOPS: “HAND QUILTING” WITH CASSANDRA
THORENSEN ON SATURDAY MORNING**

“FABRIC JOURNALING” WITH JERI RIGGS ON SUNDAY

PROGRAM

Dr. Harriet Schiffer will lecture on Kente: Cloth of the Asante Kings. She is a specialist on African cloth as well as a vendor of Kente and clothing related items in the Philadelphia area. She will bring contemporary cloth as well as pieces from her antique collection.

Kente cloth is made from several long, narrow lengths of independently woven strips of fabric, which are sewn together to form a large, rectangular cloth. Typically, each strip

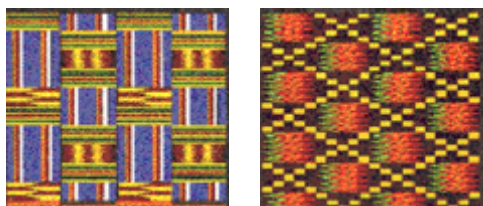
is 4 to 5 inches wide and 120 inches long. Approximately 20 to 24 strips are used to form a finished garment that measures 96 by 120 inches. These large garments are worn by men, wrapped around the waist and draped over the left shoulder and upper arm, while women wear a multi-piece garment, made from smaller pieces of cloth to form a bodice, skirt, and headwrap.

Each strip pattern has its own name and meaning. More than three hundred patterns have been identified and documented. Some patterns honor specific people, rulers, queen mothers, artists, families, historic events, or

themes such as wealth, peace, and well being. Examples of pattern names include, "no man governs alone," "one thousand shields," and "skill is exhausted."

Traditionally, the weaving and sewing were performed exclusively by male artists. Asante kings controlled kente cloth production, which was centered at Bonwire, a village near Kumasi, Ghana.

Kente cloth has become widely popular outside of Ghana, particularly in the United States, where the textiles and patterns continue to play an important role in social identity.



Source of Information: Juniata College – September 7, 2000 Web Article relating to Dr. Harriet Schiffer's museum exhibit.

WORKSHOPS

Saturday, October 14, 2006 – Cassandra Thoreson Hand Quilting Workshop. F.I.T. – 8th Floor. 9:30 a.m. – 12:30 p.m.

There are still spaces available.

We had numerous requests for workshops on the day of the Guild meeting, so we invited Cassandra Thoreson to lead a morning Workshop on Hand Quilting prior to our meeting on October 14 from 9:30 to 12:30. Cassandra will also be joining us in January to discuss Welsh Quilting. She is a wonderful teacher who specializes in the art of hand piecing, appliquéing and quilting and is currently teaching regular classes at Purl Patchwork. If you have had the opportunity to take one of her classes there or at the City Quilter, you will know what a wonderful teacher she is. For those of you who are new to quilting and would like to learn the

techniques of hand quilting, this workshop is for you. For those of you who are more experienced, it is always fun to see a new technique from a master quilter. The workshop is limited to 15 people, so be sure to sign up early. **The cost will be \$20.00.** Contact **Kitty Squire (718) 956-3005** or **Mary Butler (212) 662-7771** to sign up.

Supply List for Cassandra Thoreson's workshop:

You will need a thimble, quilting needles (#8 and #10 betweens), hand quilting thread, a hoop. Bring a sandwich of batting and two fat quarters to practice stitches. **Don't baste.** You might also want to bring along something in progress. Come with stencils, marking pencils and tape as we will discuss marking.

Sunday, October 15, 2006 - Jeri Riggs: Fabric Journaling 343 Eighth Ave 9:30 AM - 4 PM \$50.00. Jeri has been involved in journaling with fabric since the first exhibition in Houston. Visit <http://www.jeririggs.com> for info.

Journaling with Fabric is a way to exercise your creativity, try out new techniques, experiment with ideas, and document in a visual way your growth as an artist and person over time. It functions as a record of your life and a way to encourage yourself to try new ways of seeing. We will be choosing aspects of your current ideas to illustrate in small quilt format.

Supply List for Jeri Riggs workshop:

Two 8 ½ by 11 inch pieces of batting (cotton or poly/cotton) and two pieces of fabric 9X12 inches for backing.

Iron and towel for ironing surface, Teflon sheet to protect iron.

Paper to sketch and try ideas; and to record your thoughts about the quilt journal, pencil or pen.

One yard of Wonder Under® fusible web.

Fabric scissors and/or rotary cutter and mat, ruler.

Fabric markers (Pigma® pens, Setaskrib® markers, other fabric markers).

Fabric: Small pieces of quilt top you are currently working on, images photo-transferred to fabric, pieces of fabric you'd like to use or bought this month, conversation prints about issues or topics you are currently thinking about, or even plain PFD fabric for drawing on.

Assortment of beads, charms, buttons, sequins, etc.

Embroidery threads and needles (optional).

Sewing needles (#12 sharps work well for beading).

Thread for sewing on beads (Nymo or Silamide—I will bring black and white for you to use).

Sewing thread (grey or colors you like for quilting and piecing).

Trims, yarns or ribbon that speak to you.

Jeri.riggs@verizon.com.

FUTURE WORKSHOPS

Sunday, November 12, 2006 - Linda Cantrell Story Telling 343 Eighth Ave 9:30AM - 4 PM \$ TBD. After seeing the famous apartment house quilt with Elvis and the quilt show piece, Linda has become the guru of story quilts.

Sunday, December 10, 2006 - Open House for members. 343 Eighth Ave 9:30 AM - 4PM \$10.00 suggested. Members who want space and tables to finish show quilts or holiday gifts are invited.

URBAN INSPIRATIONS QUILT SHOW

MARCH 24 – 25, 2007

Go to www.empirequilters.net for updates. Click on the 2007 Show link.

PRESIDENT'S MESSAGE

Hello Quilters. I found listening at our September meeting to Genie Barnes talk about why we should consider entering our quilts in judged shows wonderfully informative and fun. She's smart, she's funny and she really knows what she's talking about. She and Donna Lamb will be judging our show this year. We have a small group working on the judging criteria and method and we'll soon be working out those details with Genie. One new piece of information – the Show Committee agreed that we'd like to offer the opportunity to our quilters to have their quilts appraised - either the ones in the show, or others. I spoke with Genie on Saturday evening and she agreed to do this. She'll be sending me information to share with you about what you need to have and what the cost will be.

I hope that you, as I, found yourselves just a bit more excited about participating in our quilt show next year. I've begun my 'President's Challenge' quilt – but I haven't decided which quilt to submit for the main show. I know I need to do that soon – since anything I submit still has work to be done to complete it. How are you doing with yours? Over the next few months we'll be having workshops and focus groups aimed at sharing information and techniques to get us each further along in our process. Topics will include hand quilting, finishing, documenting (remember Genie emphasized the need to document the 'provenance' of our quilts), making items for the Member's Boutique, etc. Please don't hesitate to let Barbara, Mary, Kitty or me know if there's a specific topic that you'd like to have covered.

Part of our mission is to reach out and support our community. This fall looks to be a busy time for NYC quilters. I want to remind you of opportunities to participate in a number of

volunteer activities the Guild is supporting, and hope you'll have time to join in:

- Quilt Pink at City Quilter on September 30, making blocks and quilts to raise funds for Susan G. Komen Breast Cancer Foundation; Contact City Quilter to sign up and for more information.
- Quilt Weekend at American Folk Art Museum on Saturday October 7, from 10 – 4. We'll hang our raffle quilt, and publicize our show, while demonstrating some quilting techniques. We still need more volunteers to be there between 10 and 4 (you don't need to be there all day). Please contact me.
- Dyckman Farmhouse Museum Heritage Tour, on Sunday October 15, where a number of our members will demonstrate quilting. For more information contact Mary Butler
- As always – we ask every member of the guild to make at least one charity quilt per year as part of our charter. Charity Day in the spring is one day we address this – but there's always a big call for quilts leading up to the holidays. So if you haven't made a quilt for charity in a while, please start one – it doesn't have to be big or perfect for a child to feel the warmth of your caring.

I hope you are enjoying the change to autumn – the air is crisp and cool, just right for quilting. I look forward to seeing you at our next meeting.

Jennifer Bigelow

DYCKMAN FARMHOUSE MUSEUM PROJECT

Empire Quilters have responded to a request from the Director of the Dyckman Farmhouse Museum at 204 Street and Broadway in Upper Manhattan to recreate a 1916 quilt. The project will start in April as soon as the Urban Inspirations Show is over. It

was voted enthusiastically at the recent meeting. A picture of the quilt (**click on "notices" link on Empire website to see picture**) shows the wear and tear and the need for replacement. The farmhouse dates from the late 1790's and was donated to the City of New York as a colonial museum in 1916.

In addition: The Dyckman Farmhouse Museum is a stop on the Upper Manhattan Heritage Tour scheduled for Sunday, October 15 from 11AM to 5 PM. Empire Members will demonstrate quilting on the porch of the farmhouse from 11AM to 4:30 PM.

QUILTER OF THE MONTH

PAMELA LEONARD WEXLER

Pamela has sewn nearly all her life. She grew up in California and as a theatre major at the University of Denver, Pamela worked on costumes for various theatrical productions. As an actress in New York, Pam worked in theatre, did voice-overs, and many commercials. During a commercial strike about 1981, Pam, with some time on her hands, picked up quilting. She hasn't stopped since!

Pam largely works on traditional quilts but has explored various methods including quilted garments. In 2003 Pam took her first Dear Jane class and became an avowed "Janiac" producing numerous Dear Jane quilts. She will share several of these with us for her quilter of the month presentation!

OCTOBER BIRTHDAYS

Frieda Langman, Sylvia Hughes, Sylvia Zeveloff, Elaine Gershman, Anna Foss, Ruth Palmer, Ulla Jorgensen, Linda Lee Kelly, Maureen McLeod, Mary Cargil, Sandy Naval, Ann Hyatt Logan, Margaret Morris, Diane Tobi Isaac, Susan Deshensky, Brenda Hureau.



2006-2007

OLD CHELSEA STATION, P.O. BOX 1293, NEW YORK, NY 10113 ♦ WWW.EMPIREQUILTERS.NET

Empire Quilters Guild is dedicated to the art and craft of quilting. The collaboration promotes equally creativity and charity as it seeks to give the group a presence in the quilting and larger communities. Annual Membership entitles you to attend all meetings, receive newsletters, discounts at area quilt shops, use of the lending library, and the opportunity to serve on a volunteer committee.

Yearly Dues: _____ Regular \$35 _____ Senior \$25 (65 and over)

Name: _____ Telephone: _____
 Address: _____ Fax: _____
 _____ Email: _____
 City, ST, Zip: _____ Birthday: _____

Which of the committee activities interest you?

- | | | | |
|---|---|---|---------------------------------------|
| <input type="checkbox"/> Block of the Month | <input type="checkbox"/> Library | <input type="checkbox"/> Public Relations | <input type="checkbox"/> Ways & Means |
| <input type="checkbox"/> Bus Trips | <input type="checkbox"/> Membership | <input type="checkbox"/> Quilt Show | <input type="checkbox"/> Website |
| <input type="checkbox"/> Charity/Service | <input type="checkbox"/> Newsletter Advertising | <input type="checkbox"/> Quilter of the Month | <input type="checkbox"/> Workshops |
| <input type="checkbox"/> Focus Groups | <input type="checkbox"/> Newsletter Editing | <input type="checkbox"/> Raffles (Monthly) | <input type="checkbox"/> Other: _____ |
| <input type="checkbox"/> History/Archives | <input type="checkbox"/> Newsletter Mailing | <input type="checkbox"/> Share Table | _____ |
| <input type="checkbox"/> Hospitality | <input type="checkbox"/> Programs | <input type="checkbox"/> Show & Tell | _____ |

Are you a member of the National Quilting Association? _____ Yes _____ No

Are you interested in being an officer or a committee chair of the Guild? _____ Yes _____ No
If yes, which positions interest you?:

Do you have special skills that you'd like the guild to know about? (i.e. grant writing, lawyer, public relations specialist, graphic designer, etc.). If so, please describe here (or attach an extra sheet):

Mail completed form to: **Empire Quilters**
 Old Chelsea Station
 P.O. Box 1293
 New York, NY 10113

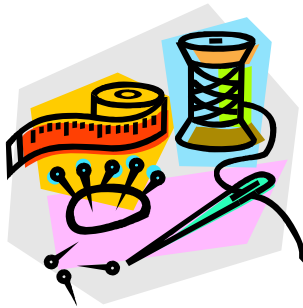
Enclose a check for your annual dues payable to: **Empire Quilters**. Pick up your membership card at the next guild meeting. *Memberships are not acknowledged by mail.* You will begin receiving the newsletter with the next issue.

Office Use Only	New Member
Check	Renewal
Cash	Senior
Money Order	Regular

**A QUILTER'S NOTION
"YOUR COMPLETE QUILTING, SEWING & NEEDLE ART SHOP IN
QUEENS"**

**HUNDREDS OF BOLTS OF TOP DESIGNER FABRICS, LARGE SELECTION OF THREADS,
QUILTING & SEWING NOTIONS, YARNS, BOOKS, PATTERNS & SO MUCH MORE!**

**QUILTING, SEWING, KNITTING & CROCHET CLASSES AVAILABLE - FROM BEGINNER
TO ADVANCED. KIDS CLASSES AVAILABLE AGES 8-14.**



10% GUILD MEMBERS & SENIOR CITIZEN DISCOUNTS

**59-08 WOODSIDE AVE, WOODSIDE, NY 11377
PHONE: 718-424-4691 FAX: 718-424-4692
MON - FRI 11:00- 6:00 // SAT & SUN 10:30 - 6:00PM**

WWW.AQUILTERSNOTION.COM

INFO@AQUILTERSNOTION.COM

**CONVENIENTLY LOCATED 1 ½ BLOCKS FROM THE #7 / LIRR TRAIN STOP AT 61ST
STREET/WOODSIDE. WALKING DISTANCE FROM M/32, Q18 & Q60 BUS LINES.**

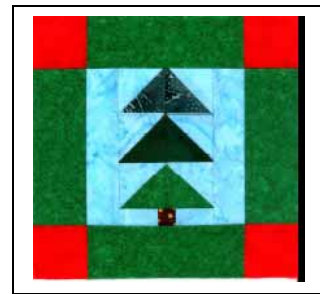
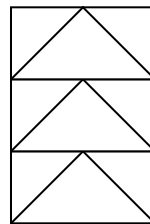
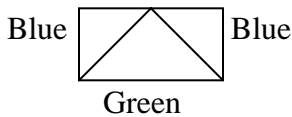
BLOCK OF THE MONTH

Christmas Tree X Two (both are 8" finished and 8-1/2" unfinished)

Instructions for machine piecing:

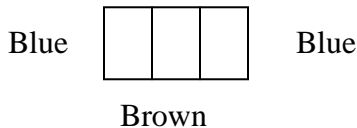
- 3 – 2-1/2" X 2-1/2" squares of green fabric, either the same green or different greens
- 3 – 2-1/2" X 2-1/2" squares of blue for the sky
- 1 – 1" X 1" square of brown for the tree trunk
- 2 – 1" X 1-1/2" rectangles of blue
- 2 – 1-1/2" X 5-1/2" rectangles of blue
- 4 – 2" X 5-1/2" strips of green for sashing
- 4 – 2" X 2" squares of red for the corner stones

Place together each 2-1/2" green square with a 2-1/2" blue square, right sides together. Draw a diagonal line from corner to corner. Sew 1/4" on both sides of the diagonal line. Then cut in half on the diagonal line to form two half square triangles. Press the seam allowance on each piece in opposite directions. Trim each square to a 2" square. Sew together with the greens next to each other and the blues on the outside:



Sew the three rectangles together to form the tree:

Sew the 1-1/2" blue strip to both sides of the 1" X 1" brown tree trunk square. Sew this to the bottom of the tree:



This part of the block should now measure 5-1/2" X 3-1/2". Sew the blue 1-1/2" X 5-1/2" strips to both sides of the block. This changes the block measurement to 5-1/2" X 5-1/2".

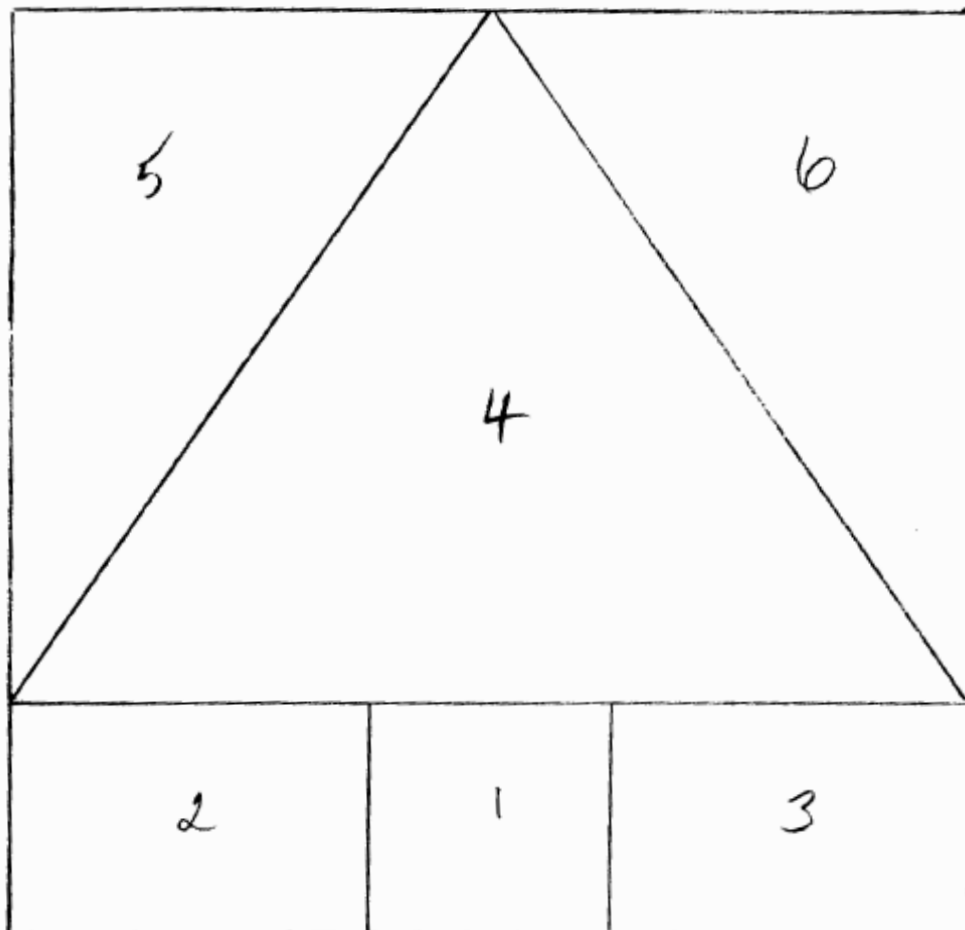
To finish the block, sew a green 2" X 5-1/2" strip to each side of the block. Sew a red 2" X 2" square to both ends of the remaining two green 2" X 5-1/2" strip. Sew these to the top and bottom of the block. This finishes the block at 8-1/2" X 8-1/2".

If you would prefer to paper piece a tree, a template is attached, which should measure 5-1/2" X 5-1/2" with the 1/4" seam allowance, and here are the fabric requirements for each of the numbered pieces:

- #1 – one 2" X 2" brown square
- #2 + #3 – two 5" X 2" blue strips for the sky
- #4 – one 6" X 4" green strip for the tree
- #5 + #6 – two 6" X 3" blue strips for the sky
- 4 – 2" X 5-1/2" strips of green for sashing
- 4 – 2" X 2" squares of red for the corner stones



Sew these pieces onto the template in numbered order. Trim block to measure 5-1/2" X 5-1/2". To finish the block, sew a green 2" X 5-1/2" strip to each side of the block. Sew a red 2" X 2" square to both ends of the remaining two green 2" X 5-1/2" strip. Sew these to the top and bottom of the block. This finishes the block at 8-1/2" X 8-1/2".



LIBRARY NEWS

The library will resume at the October meeting and service will be available from 12:00 to 1:00 pm. All books that were borrowed over the summer should be returned then. If books are not returned on time, a fine will be collected. The catalogue of the library will be completed shortly and will then be entered as a database on our web site. We also hope to set up a request address on the website

so that you can ask for a book to be brought to the meeting. Magazine donations are always welcome, and the money collected goes into the general fund, and we will be having a book sale probably in December or January to add to the Show Fund. We thank all the members who are generous both to the library and to our sales. If you are interested in working with the library committee, please join us in October, especially if you are a new member. It is a wonderful way to get to know the Empire members. **Catherine Bancroft**

We are happy to introduce
our pretty little fabric shop...

purl
patchwork

a new source for all your quilting needs!

We feature cheerful vintage prints,
delicate historical reproduction fabrics,
beautiful contemporary designs,
and a rainbow of solid colors.

Purl Patchwork is at 147 Sullivan Street,
in New York City, between Prince and Houston.

Call us at 212-420-8798

And while you're in the area,
don't forget to visit our knitting store, Purl,
just down the street at 137 Sullivan Street.

Visit us online at

purlsoho.com

STORE HOURS

MONDAY - FRIDAY 12-7 SATURDAY + SUNDAY 12-6

TREASURER'S REPORT

Treasurer's Report
8/16/06-9/13/06

Income as of 9/13/06	Month		Y-T-D
Bus Trips	\$ 30.00	\$	30.00
Interest on Money Market	\$ 30.55	\$	30.55
Library Income	\$ 8.00	\$	8.00
Member Boutique			
Membership/Guests	\$ 2,390.00	\$	2,870.00
Monthly Raffles	\$ 196.00	\$	196.00
Newsletter Advertising	\$ 1,836.50	\$	1,836.50
Share Table	\$ 100.00	\$	100.00
Vendor Sales			
Workshops	\$ 280.00	\$	280.00
Deferred Income		\$	3,605.00
Total Income	\$ 4,871.05	\$	8,956.05

Expenses as of 9/13/06	Month		Y-T-D
Donation to Katrina-Habitat	\$ 200.00	\$	200.00
Insurance			
Newsletter Expense	\$ 339.10	\$	339.10
Newsletter Mailing	\$ 109.20	\$	109.20
Pin Peddler	\$ 517.50	\$	517.50
Printing and Reproduction			
Post Office Box			
Quilt Rack	\$ 149.00	\$	149.00
Refunds on Membership			
Refunds on Workshops			
Rent			
Returned Checks			
Reward for Early Renewal			
Secretary Expenses			
Speaker	\$ 250.00	\$	250.00
Speaker Expenses	\$ 319.50	\$	319.50
Stationery			
Ways and Means Misc	\$ 119.00	\$	140.50
Website			
Welcoming Committee			
Workshop Expense		\$	300.00
Workshop Teacher Fees			

Total Expenses \$ 2,003.30 \$ 2,324.80

Current Bank Balance
as of 9/13/06
Quilt Show Checking \$ 15,016.60
Guild Checking \$ 23,852.29
\$ 38,868.89

SHOW BUDGET

2007 Quilt Show

Balance 6/30 \$ 15,347.27

Income	Month		YTD
Vendor Deposits	\$ 825.00	\$	825.00
Raffle Sales	\$ 30.00	\$	30.00
Totals	\$ 855.00	\$	855.00

Expenses	Month		YTD
Promo Printing	\$ 107.66	\$	107.66
Raffle Tkt Printing	\$ 478.01	\$	478.01
Vendor Refund	\$ 600.00	\$	600.00
Totals	\$ 1,185.67	\$	1,185.67

Balance as of
9/12/06 \$ 15,016.60




Empire members receive a 10% discount.

Due to space restrictions, could not include Shows & Events info. Please go to the Empire website or refer to September newsletter.

BERNINA 
 AUTHORIZED DEALER

FABRIC
 CLASSES, SUPPLIES
 KITS



THE QUILT SHOP

5 PADANARAM RD.-RT. 37
 DANBURY, CT 06811
 WORTH THE TRIP

GINNY MURPHY
 TEL: 203-743-0543
 wamquilt@aol.com

Empire members receive a 10% discount.

Sew Right Sewing Machines

“Experience the Difference”

Factory Authorized Sales & Service on:

Husqvarna Viking • Baby Lock

Bernina • Elna

NY's best repairs on all makes

For Empire Guild Members

***Free shipping on phone orders
 over \$50**

***Always Save at least 10%**

On All Sewing Machine Repairs

And all regular priced items

223-20 Union Tpke. Bayside, Queens NY
 11364

718-468-5858

e-mail info@sewright.com web

www.sewright.com

*offer good with current quilt guild membership

SUNSHINE/WELCOMING

I was amazed and very pleased we had so many new members and guests at the Sept. meeting. I even ran out of name tags. I am establishing a table for new members and guests this year. It worked out nicely, and I am going to continue with a special table the

whole year. I am always looking for someone who would like to help me at the welcoming table. bpile@optonline.net or call Beth at 631-286-5532

SHOW & TELL

Thank you to the following people for sharing their beautiful work at the September guild meeting:

Nathasha Brooks-Harris (Dolls: *Butternut* and *African Warrior Princess*), Mary Butler (4 *Patch Diamonds*), Anna Faustino (quilts: *Look! Look! I See It*; and *Enigma*; wearables: *Da Vinci Coat*; *Hot Flash*; and *Green Thing* vest) Renee Fields (*Picnic*), Debra Levin (*Flower Power*), Linda Miller (*At Last*); Gardy Nadler (*Fairies* and *Celebration*), Diane Rubenstein (*Funny Farm*), Ligaya Siachongco (*Enchanted Forest*), Anna Sinitsyna (*New York – New York*), Rhona Triggs (*Parrots*).

If you missed the September meeting, you can see pictures of these works on the guild website. Look for the **Show & Tell** link. Bring your Show & Tell items to the October meeting!

RAFFLE COMMITTEE

The Raffle Committee wants to thank all these generous contributors for the wonderful outpouring of donations this past month: Diane Pryor-Holland, Larry Gifford, Barbara Hull, Alice Oberstein, Fran Riede, Betty Siever, Mary Cargill, Marie Annoual and Nancy Castel as well as all of you who didn't sign our list. Your gifts are what makes the Raffle really shine. Special thanks to Betty Chen for her help (and donations) in selling tickets. It looks like everyone did a lot of cleaning and organizing this summer! Thanks too, to everyone who purchased tickets - it was our most successful month ever!
Pat, Anita and JoAnn

THE CITY QUILTER



For All Your Quilting Needs

133 West 25th Street
212-807-0390
www.cityquilter.com

Tuesday - Friday, 11 to 7
Saturday, 10 to 6
Sunday, 11 to 5

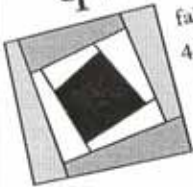
Guild Members
receive a 10% discount

Sometimes a great
notion?

Always GREAT
notions at
The City Quilter

Where you will find
the latest gizmos
& gottahaves

the
quilt cottage



fabrics • yarn • gifts
414 mamaroneck avenue
mamaroneck, ny 10543
(914) 777-1333

one block south of
Metro North
(mamaroneck station)

directions:
Hutchinson River Parkway
Exit 23S or I-95 NYS Thruway
Exit 18A (Mamaroneck Avenue)
to Mamaroneck business district.
1/4 mile from railroad station
on right-hand side.

distinctive collection of
cotton fabrics

unique assortment
of
ribbons,
swiss laces
&
trims

special
orders

fabric buyers discount card

colorful,
funky,
yarns

hours:
monday - saturday
10-6
www.quiltcottage.net

sewing machine
repairs

quilt finishing
&
restoration



CHARITY COMMITTEE

The Empire Quilters Charity Committee would like to thank the following members for their contributions in September:

Quilts: Anna Krassy – 2, Barbara Hull – 3, Carmen Caldaio – 1, Veronique Milliez – 2, Pat Decker – 3, Judy Mein – 1, Sandy Syken – 1, Pam Wexler – 3, Marie Annoul – 7, Marilyn Korn – 2, Lee Ebbs – 1, Betty Chen, Michael & Anna Fung – 4.

Baby Hats: Carmen Caldaio – 8, Fanny D'Avino – 18, Sandy Syken – 14.

Fabric: Mary Butler

Quilt Tops: Betty Silver, Juliana Kalloo

Teddy Bears: Betty Chen, Michael & Anna Fung – 6

We would like to say a special thank you to Michael and Anna Fung for helping their Mom, Betty Chen, with the four beautiful quilts and the six teddy bears they made. Keep up the good work and we look forward to more beautiful quilts.

VOLUNTEER(S) WANTED

Volunteer(s) are wanted to take over the Service Committee activities for the remainder of the year as Denise can no longer run this committee. In addition to the monthly collection and dissemination of charity quilts, the committee runs the annual Charity Day activities. For more information about tasks, please contact Denise Walsh-Horowitz. **Please note - this can be filled by co-chairs or a committee.**

FOCUS GROUPS

African Mosaic Potholder Focus Group

Date: October 14, 2006. (part two)

Time: Approx 3:30 (After the general meeting).

Group Leader: Debra Levin

Cost: No Cost

Please join Debra Levin and design a potholder using Lisa Shepard's African Mosaic technique. In September we had a short session after the Empire meeting to demonstrate the technique and discuss supplies you will need to bring to the October session, where you will design your potholder. You can finish it at home at your leisure! If you missed the first session, e-mail **Debra @ deblevin@verizon.net** for supplies.

Members' Boutique Focus Group

Date: Saturday, November 11, 2006 & January 13, 2007

Time: Approx 3:30 - 5:00 pm

(After the general meeting)

Group Leaders: Beth Pile and Gail Lefton

Cost: There is no cost, but bring your ideas and most of all, your enthusiasm.

The focus group held in Sept. was a good start on preparing for the Boutique. I think I need though to clarify what the boutique is. Members have the opportunity to sell what they make as a quilter and craft person. Several folks felt the boutique was just donated items from the membership. This is not the case. We will gladly accept donated good quilted or handmade quality items to sell for the guild. We are looking for orphan blocks to be donated to sell. Some members do sell items for a profit and are allowing the guild to take 15% from anything they sell. This seems fair. If you have questions, please call or e-mail **Beth Pile @ 1-631-286-5532 or bpile@optonline.net**. We will be having another focus group in November to help everyone price their items. Our last focus group will be in Jan. for the final details for the boutique and sign up for working times at the show. I will accept donated orphan blocks at anytime. All other items need to be turned in at the show in March

Foundation Piecing Focus Group
Date: Saturday, November 11, 2006
Time: 10:30a.m. – 12:30 p.m.
(Before general meeting)
Group Leader: Leila Lieberman

Foundation piecing is a fun way to make blocks which will be perfect. It is sort of quilting by numbers. Our focus groups will teach you how to do this. Materials you will need are: cutting mat, rotary cutters, a sharp pencil, ruler, scissors, tracing paper, four or five fabrics that you like together, thread and needles, and, if possible, a sewing machine. I hope those people who bring their machines will be kind enough to let others use them. Foundation piecing can be done by hand, but is much easier by machine. Any Questions, call **Leila Lieberman (212) 662-1575** or e-mail at leilamark@aol.com.

Hand Applique using the Needle-turn Method

Date: Rescheduled Date: January 13, 2006
Time: 9:30 – 12:30) prior to the general meeting).

Group Leader: Shirley Levine

This method of hand applique allows you to make complex, layered applique designs - like flowers. Participants will work on a single small appliqué piece to learn the technique, including inside and outside curves. Please bring two 6 inch squares of fabric, a fabric marker, needles (applique or sharps), thread to match one of the pieces of fabric, and scissors. **Shirley Levine 212-348-0948** if you have any other questions - or email me at Shirley@queso.com.

NEW COMMITTEE

Volunteer(s) Needed!

We have a wonderful problem. We have generated so much interest in the community that we are receiving frequent requests to

accept charitable donations of fabric, trimmings, books etc. We are getting so many of these requests that the Executive Board has decided to request a volunteer from the Guild to serve as the **Charitable Donation Coordinator**. This person would be asked to coordinate all the donations with the donor and arrange to have them picked up and/or delivered as well as providing the tax letter for the donor (basically a form letter) and working with the Service Committee chair to determine the best use of the donations. You would not need a car or extra room to volunteer for this- although it would be wonderful if you did! We do have a number of individuals in the guild who are willing to help out with pickups and storage where necessary.

This is YOUR guild and we need your help to make it better. Please, volunteer for this or any of the other standing committees you are interested in. Just contact **Sylvia Hughes, Kitty Squire, or Jennifer Bigelow** to volunteer for this or any of the other committees.

POSTCARD CHALLENGE

In the June newsletter, Jane Broaddus and Ligaya Siachongco presented a **Fabric Postcard Challenge** with a New York City theme.

If you missed the June meeting, you can download instructions for making postcards along with the guidelines for this challenge on the Empire website.

We had good participation at the September meeting and we are continuing this challenge for October.

All you need to do is make one or more fabric postcards with a New York City theme and bring them to the October meeting.

Participants are encouraged to donate their postcard (s) for sale at the Member's boutique at the 2007 show.

CONGRATULATIONS MEMBERS

Congratulations to guild member Ligaya Siachongco for her first place prize in the challenge presented by A Quilter's Notion. Ligaya showed her winning entry *Enchanted Forest* at the September, 2006 guild meeting. Keep up the good work, Ligaya!

Guild Member Anna Faustino will have two quilts in the International Quilt Festival in Houston in November 2006. Her quilts *Waiting for Grandpa* and *Disco* will both be on display at the festival. And more good news from Anna, she is working on her first quilt book, which will be published next year. Stay tuned for more information about this exciting project. Congratulations, Anna!

Member, Mary Louise Smith, has had her journal quilts, appear in several INTERNATIONAL QUILT FESTIVALS Houston and Chicago's "Journal Quilt Project" exhibitions. Now, three of them have been selected for inclusion in Karey Bresenhan's new book, "CREATIVE QUILTING: THE JOURNAL QUILT PROJECT", publisher QUILTING ARTS, available October, 2006 at www.quiltingartsllc.com
<http://community-2.webtv.net/MARYLOUISESMITH/MARYLOUISESMITH>
<http://community-2.webtv.net/MARYLOUISESMITH/QUILTJOURNAL2004>

2006 – 2007 Guild Meeting Dates

(All dates are the second Saturday of the month):

**Sat, Nov 11, 2006 – Speaker
Linda Cantrell**

Sat, Dec 09, 2006 – TBD

**Sat, Jan 13, 2007 – Welsh
Whole Cloth Quilts W/
Cassandra Thoreson**

Sat, Feb 10, 2007 – TBD

**Sat, Mar 10, 2007 – Charity
Quilt Day**

Sat, Apr 14, 2007 - TBD

Sat, May 12, 2007 - TBD

Sat, Jun 09, 2007 - TBD

Watch the website for information about programs and workshops.



Little Red Quilt House

20 Wilson Street, Fairfield, CT 06825-1419
P: (203) 258-9464 F: (203) 371-6148
www.LRQH.Com Sales@LRQH.Com



EQG Members 10% OFF

Precision Finishing Services

Fast Return - Just 3 Weeks

Pantograph Quilting	\$0.01 / square inch
Special Quilting	\$0.02 / square inch
Custom Quilting	\$0.03 / square inch
Binding Services	Call us about custom hand dyed binding fabrics
<i>Using your supplied binding material</i>	
Machine Binding	\$0.05/inch
Hand Binding	\$2.00 / foot
Basting Service	
Double, Twin size bed or smaller	\$20.00
Queen to Super Queen size	\$35.00
King Size bed to tapestry	\$50.00

Any Quilt! Any Condition!

We'll Do It!

Hand Crafted Fabrics

Fat Cuts

Full Yards \$9.95
Half Yard \$5.25
Fat Quarters \$2.95
Fat Eighths \$1.95




800 shades
Cotton &
Phabulous
Phannels!

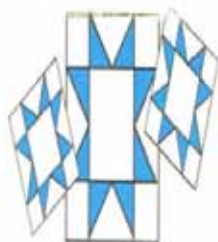
Finishing's Not Our Hobby, It's Our Business!

NEWSLETTER DEADLINE

The deadline for the November, 2006 newsletter is: **Wednesday, October 18, 2006.** Please send information to: Linda Lee Kelly, 950 Oaks Drive, Franklin Square, NY 11010 or e-mail: LKELLY20@OPTONLINE.NET

WORKSHOP REGISTRATION POLICY

Payment in full for workshops is required by the date of the workshop. Members who cancel up to 7 days prior to the workshop will be refunded in full. If you cancel after that, refunds will be made **only** if a replacement student can be found.



STOVER QUALITY QUILTING

All over patterns, Outline, In the Ditch, Marked and Stamped Patterns, plus Combinations

all hand guided

Backings and Batings also available

For free brochure, price list and information, please call 1-800-521-4171 or 573-377-2303

Or write to Stover Quality Quilting, 606 North Ash, Stover, MO 65078

e-mail: Stoversq@advertisnet.com

CELEBRATING over 60 years of Custom Machine Quilting

2005 -2006 OFFICERS AND CHAIRS

President:	Jennifer Bigelow (203) 323-5138
First Vice Pres:	Marilyn Korn (212) 206-7203
Second Vice Pres:	Michael Greenberg (646) 638-2826
Treasurer:	Kitty Squire (718) 956-3005
Secretary:	Gail Lefton (718) 762-5499 **
Block of the Month:	Anna Krassy 212-242-3253 **
Bus Trips:	Aleeda Crawley (973) 313-0844 ** Sylvia Hughes (212) 665-5036 **
By-Laws:	Jennifer Bigelow (203) 323-5138
Focus Groups:	Anna Faustino (201) 246-1142 **
History/Archives:	“Position Open”
Library:	Sylvia Hughes (212)-665-5036 Tina Barth (212) 691-3108 Pearl Chow (718) 263-5483 Regina Nordquist (212) 740-3615
Membership:	Emma Green (718) 723-8405 Maggie Williamson (718) 798-3692
Newsletter. Advert.	Cynthia Spurles (718) 545-4406
Newsletter Editor:	Linda Lee Kelly (516) 352-2268
Newsletter Mailing:	Susan Louis (718) 658-8352
Nominating:	Sylvia Hughes (212) 665-5036
NQA Coordinator:	Beth Pile(631) 286-5532
Programs:	Barbara Hull (718) 229-4895
Quilter / Month:	Debra J. Levin (212) 832-8575 **
Raffle:	Pat Decker (718) 544-2034 JoAnn Montalbano (516) 770-3656 Anita Duncan (212) 889-2067
Service:	Denise Walsh-Horowitz (718) 454-1944 Alice Oberstein (718) 591-4639 Marion Webber (718) 276-3852
Share Table:	Veronique Milliez (212) 534-6604 Anna Krassy (212) 242-3253
Show & Tell:	Sylvia Hughes (212) 665-5036
Sunshine:	Beth Pile (631) 286-5532
2007 Quilt Show:	Larry Gifford (212) 717-0892
Ways & Means:	Position to be filled
Website:	Cindy Russell (212) 414-9201
Welcoming:	Beth Pile (631) 286-5532
Workshops:	Mary Butler (212) 662-7771

** New Board/Chair member

“HAPPY HALLOWEEN”