



FIRST CLASS MAIL

Old Chelsea Station

P.O. Box 1293

New York, NY 10113

WWW.EMPIREQUILTERS.NET

NEXT MEETING: JUNE 10, 2006

11 AM TO 12 PM – BOARD MEETING

1 PM TO 5 PM – GENERAL MEETING

Fashion Institute of Technology (F.I.T.)

David Dubinsky Center, 8th Floor

West 27th Street & 8th Avenue, NYC

GUEST FEE \$5.00

DATED MATERIAL
Please Deliver Immediately

PROGRAM: “THE CREATIVE PROCESS” WITH JOY SEVILLE

VENDOR: MEMBER’S FLEE MARKET

QUILTER OF THE MONTH: NO QUILTER OF MONTH

WORKSHOP: “AFRICAN TRAILS” W/DOROTHY SCALICE

PROGRAM

Joy Saville's work captures the unexpected moments in life that take our breath away — the color of dogwood trees, autumn leaves, or the view of the landscape as you drive over a hill. These are the frozen moments that she expresses in her work. Piecing cotton, linen and silk fabrics in an impressionistic, painterly manner, Joy uses the inherent quality of natural fabrics to absorb or reflect light, producing a constant interplay of light, texture and color.

Her work is in numerous private, corporate, and public collections and has been exhibited throughout the US and internationally in *Quilt National*, *Visions*, *Fabric Gardens*, *Art in Embassies Programs*, *Quilt Surface Design International* and other invitational shows. We are happy that Joy will be sharing her work and her thoughts with us!

WORKSHOP

Day: Sunday, June 11, 2006

Time: 9:30 am – 4:00 pm

Place: 343 8th Avenue, New York

“African Trails” with Dorothy Scalice. This is the workshop you voted for after Dorothy showed us the quilt when she visited Empire last fall. Dorothy will show us how to make our own version. Hers was made using African fabrics, but you can use whatever you wish. By using this free-wheeling process, you’ll create randomized blocks that are positively liberating and colorful. You will also learn the technique of sewing down Quick Bias Tape with a double needle. **\$40.00. Workshop must have 8 in attendance. If not enough have signed up by**

June 5 we will have to cancel. Remember this was the workshop members voted to have!

Workshop information is always on the web at www.empirequilters.net. If interested, contact **Mary Butler at 212-662-7771**.

Supply List: Sewing machine, 80/12 Microtex Sharp needle, Schmetz® 3.0 Double Needle to sew the bias tape.

Rotary cutter with a **sharp** blade, 18" x 24" cutting mat.

Rulers: **BOTH** 6" x 24" and 12 ½" square.

Thread: Neutral 100% cotton thread to blend with your fabrics (NOT WHITE)

Two (2) rolls Clover Quick Bias Tape® (1/4" wide) in a color of your choice plus two (2) spools of thread to **match the bias tape**. You want a contrast between the bias tape and the ground fabrics.

Fabric & Pre-Cutting Requirements: (To be done prior to class)

BACKGROUND FABRIC: 3 Yards Total

- Cut 16 (sixteen) strips 6" x width of fabric.

PATTERNED FABRICS: 9 TO 12 Fat Quarters (different colors & patterns).

NOTE: Try not to use directional fabrics.

- Stack 2 or 3 of the Fat Quarters, all pretty side up, and make the following cuts

ALONG THE LONGEST EDGE:

1 ½" 2 ½" 3 ½" 4" 5 ½"

Pin together five (5) of the strips from **EACH** color grouping.

Repeat until all Fat Quarters have been cut.

BORDERS AND BINDINGS WILL BE DISCUSSED IN CLASS.

QUESTIONS???? Please feel free to call Dorothy Scalice at: **(860) 355-3522** or E-mail at: QOW@charter.net.

PRESIDENT'S MESSAGE

Hello everyone. I just want to thank all of you who attended the Guild meeting in May. I was so pleased to see everyone taking a lively interest in talking about what's important to you all. Thanks to Barbara Hull who arranged to have a PC available and scribed the many ideas you all presented. We'll be sorting through this to see the themes (as we

highlighted at the end), and to focus on how to achieve what we find most important.

I'll ask again for anyone who has a strong interest in a particular area to consider volunteering - not necessarily to lead a committee, but to work with the committee chair person(s) to make this all work. And I'd like to thank those folks who have just accepted leadership roles for the next two years, to take on Focus Groups, Block of the Month, Quilter of the Month, and secretary. We still need someone - or a team of willing people (many hands makes the work lighter) - to head up our Ways and Means activities. As we discussed this afternoon, our Show is now less than 1 year away, and we really need to come up with some ideas (re-used or new) for raising money. Please contact Sylvia Hughes or myself if you're interested.

As an example, Anna Faustino has graciously agreed to take on the Focus Group Committee - without really knowing what this requires. This DOES NOT mean she's running the focus groups - rather that she'll do her best to get various members to present focus groups. It's clear from this afternoon's meeting that a set of focus group sessions on a range of topics and skill levels is a high priority for the Guild to foster both education and fellowship.

But Anna really will need help with this to get things off the ground. She's a relatively new member and doesn't know so many of you to ask for your support - so please contact her and help her out. Anna has the added challenge of not being able to learn from Dorothy Arkell just how to go about this work. Some people have offered suggestions - but we need more involvement here.

I know I singled out Anna F. but the same holds true for the other committees and particularly the new committee chairs. As I said this afternoon - the Guild will only survive and thrive if all members are willing to pitch in to make it the Guild you want it to be. Next year will really require each and everyone of us to pitch in - both to sustain a high-quality monthly event and to present a magnificent show in 2007.

I hope you all have a wonderful summer, and if you haven't already done so, you might want to start on your quilt for the show. Some of the show details are found later in this newsletter, as well as on the website. **Jennifer**

TREASURER'S REPORT

Treasurer's Report
4/13/06-5/14/06

Income as of 5/14/06	Month	Y-T-D
December Fund Raiser		\$1,494.00
Fons and Porter		\$15.00
Guest Fees		\$85.00
Interest on Money Market	\$40.27	\$124.66
Katrina Auction		\$200.00
Library Income	\$58.45	\$157.00
Membership	\$1,540.00	\$7,055.00
Monthly Raffles	\$137.00	\$904.00
Newsletter Advertising		\$2,547.70
Share Table	\$72.75	\$716.25
Quilt Show Sponsor		\$250.00
Vendor Sales		\$552.81
Vendor Deposits-Show	\$1,412.50	\$1,412.50
Workshops	\$295.00	\$3,032.00
Total Income	\$3,555.97	\$18,545.92

Expenses as of 5/14/06	Month	Y-T-D
December Fund Raiser Expenses		\$250.00
Fons and Porter Subscriptions		\$80.00
Insurance		\$1,122.00
Newsletter Expense	\$322.64	\$2,797.27
Newsletter Mailing	\$117.00	\$1,225.40
Printing and Reproduction		\$16.23
Office Supplies-Show	\$68.87	\$68.87
Postage-Show	\$31.50	\$90.35
Post Office Box		\$48.00
Raffle Quilt-Show		\$120.07
Refunds on Membership		\$75.00
Refunds on Workshops		\$20.00
Rent	\$150.00	\$5,160.00
Speaker	\$250.00	\$1,075.00
Speaker Expenses	\$89.75	\$1,345.94
Stationery		\$396.88
Website		\$219.80
Welcoming Committee		\$60.04
Workshop Expense		\$1,921.40
Workshop Teacher Fees		\$2,110.80
Total Expenses	\$1,029.76	\$18,203.05

Current Bank Balance as of 5/14/06		
Quilt Show Checking	\$14,266.68	
Guild Checking	\$20,097.84	
	\$34,364.52	

LIBRARY NEWS

Our May meeting was a busy and productive one as the members discussed our organization and the ways in which it can better serve our members in the areas of education, fellowship, and service to the community. There was a clear mandate for more

focus groups and member designed education as well as praise for our special activities. Now is the time to consider what committee you can work on. Thank you to those who filled out the library form...the recommendations spread across traditional, innovative and contemporary techniques. And we thank our donors of magazines and books who support the library: Stefanie Sheehan, Mary Cargill, Nancy Castel and Michael Greenberg. Their donations are a resource for the members to enjoy.

Catherine Bancroft

NOMINATING COMMITTEE

On Saturday 5/13 nominations were made for replacements on the Board. Nominated were Gail Lefton for Secretary; Anna Krassy for Block of the Month; Anna Faustino for Focus Groups and Debra J. Levin for Quilter of the Month. Voting for these positions will be on Saturday June 10.

We still need someone to take over the Ways and Means position. Developing ways to generate money for the Guild is always important and is even more important as we approach our March 2007 quilt show. Remember that several people can share that position.

Thanks,

Sylvia Hughes (Nominating Committee)

CONGRATULATIONS GUILD MEMBERS

Congratulations to guild member **Anna Faustino** for her **Best in Show** award at the recent Northern Star Quilters' Guild World of Quilts XXVII show. Anna's quilt *Flamenco* took the top honors, and we're extremely proud of her. Anna's quilt *Disco* received the **Best Use of Color** award at the same show. And there's more!... Last month Anna received the **Viewers Choice** award at the American Quilters Society show in Paducah, Kentucky, for her quilt *I Didn't Do It!*

Empire Quilters member **Benedicte Caneill** received two **Honorable Mention** honors at the Northern Star Quilters' Guild show for her works *Portrait of a Kathakali Dancer*, and *Circles & Paisleys*. Benedicte also received a **Third Place** award for her *Pride of the Sea* entry in the Shakespeare in Stitches Challenge for the show. Congratulations, Benedicte!

Empire Quilters member **Carole Hoffman** had two beautiful works in the Northern Star show: *The Good Daughter* and *Crop Circles*.

Congratulations to **Ligaya Siachongco** and **Jane Rosenthal** for their second and third place wins in The City Quilter's annual challenge! Ligaya and Jane showed their quilts at the May guild meeting. Be sure to look for their quilts on the Show & Tell page of the website. All of the quilts that were displayed at the shop were incredible — creative, beautiful, fun and well-executed. If you missed the exhibit, be sure to plan to visit (or even participate!) next year. Good job, Ligaya and Jane!

Please send your news items to info@Empirequilters.net so that we can share with the guild!

BOARD MEETING MINUTES ON WEBSITE

Our board meeting minutes are posted on our website at:

WWW.EMPIREQUILTERS.NET They can be found on the Committees page of the website and are in .pdf format. A password is required to open the file.

If you've forgotten the password, e-mail info@empirequilters.net. When your membership is verified, the password will be e-mailed to you. Additionally, the minutes can be perused at our meeting; they are to be found at our membership table.

Joan Hellmann, Secretary

BERNINA
AUTHORIZED DEALER

FABRIC
CLASSES, SUPPLIES
KITS



THE
QUILT
SHOP

5 PADANARAM RD.—RT. 37
DANBURY, CT 06811
WORTH THE TRIP

GINNY MURPHY
TEL: 203-743-0543
wamquilt@aol.com

10% Discount to Empire Guild Members

FABRICS NOTIONS BOOKS CLASSES
PFAFF SEWING MACHINES

QUILT ESSENTIALS LLC
203 762-9696
35 Danbury Road (Rt. 7)
(Behind Dunkin Donuts)
Wilton, CT 06897
Mon-Sat 9:30-5:30, Th 9:30-8:30, Sun 12-5
QuiltEssentialsLLC@sbcglobal.net

10% Discount to Empire Guild Members

Sew Right Sewing Machines

“Experience the Difference”

Factory Authorized Sales & Service on:

Husqvarna Viking • Baby Lock

Bernina • Elna

NY's best repairs on all makes

For Empire Guild Members

***Free shipping on phone orders
over \$50**

***Always Save at least 10%**

On All Sewing Machine Repairs

And all regular priced items

223-20 Union Tpke. Bayside, Queens NY
11364

718-468-5858

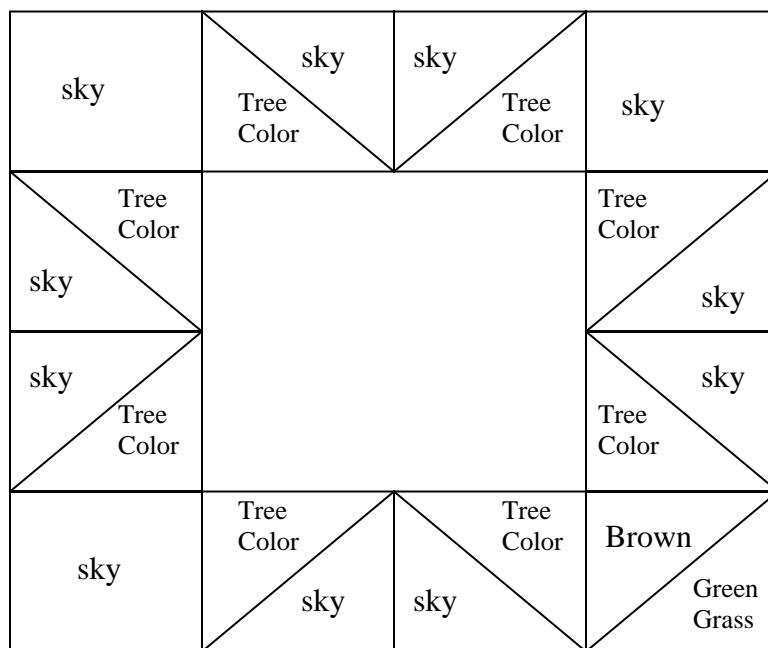
e-mail info@sewright.com web www.sewright.com

*offer good with current quilt guild membership

GUILD MEMBER'S QUILTS ON DISPLAY

Lethia Johnson's "Strips and Curves" and Barbara Rose's "Stack 'n Whack", "Kangaroo Roo", and "Sunny Strips and Curves" are part of a display of quilts at the Teaneck Public Library in Teaneck, New Jersey. Quilts shown are all made by women from the quilt group at the Teaneck Senior Services Center. Call the library at (201)-837-4171 for more information.

BLOCK OF THE MONTH



Variation of a tree in its fall colors

This is an 8 inch block (8 ½ inches unfinished)

Please use fall colors (red, yellow, green, rust, etc.) for the tree, brown for the trunk of the tree and blue for the sky

You need:

3 – 2 ½ inch sky squares for the three corners

4 – 2 7/8 inch squares for the sky part of the half square triangle

4 – 2 7/8 inch squares in the chosen fall color for the other half of the half square triangle

Draw a line on one square and sew one sky square to one fall color square by stitching on both sides of the drawn line. Cut in half to form the half squares needed as shown above.

The resulting square should measure 2 ½ inches.

1 – 2 7/8 inch square of brown for the tree trunk

1 – 2 7/8 inch square of green for the ground. Sew these together as shown above and use one square, which should measure 2 ½ inches, as the tree/green grass.

CHARITY COMMITTEE

The Charity /Service committee would like to thank the members for their continued support. If you donated a quilt, premie hats/booties, fabric at the May meeting, please see Denise Walsh-Horowitz at the June meeting. She will record your name for the September newsletter.

There are patterns on the website in PDF format for quilts, stuffed animals, premie caps, wheelchair bags

if you are interested in making anything over the summer.

SHARE TABLE

A great big thank you to all the members who have, time and time again, graciously donated some of their fabric to the Share Table. One and all have found this to be a great source for just the right bit of fabric needed to finish that special project. This

sharing is a big success and it all goes to the Guild's fund for the upcoming Quilt Show in March. Please keep the fabric coming, as we will still have the Share Table in June. – **Anna Krassy**

SUNSHINE/WELCOMING

I heard a lot of good suggestions about welcoming new members at the May meeting. I am looking for helpers to welcome new people. If you can help in any way, contact me. We can continue to make Empire a great guild. Thank you, **Beth Pile** bpile@optonline.net or 631-286-5532.

YAHOO! GROUPS

We will be conducting future invites but you don't have to wait to join. It is as simple as sending us an email to EQG-subscribe@yahoo.com, mention your name and that you are an Empire Quilters member. That's all you need to get going.

If you have signed up you can always access the Group through the Yahoo Groups home page at <http://groups.yahoo.com/group/EQG/>. Here you will need to log in with your User ID and Password that you set up at the time of the invitation. You can also request an invite by clicking the "Join This Group" button. See you online.

2006 – 2007 GUILD MEETING DATES

(all dates are the second Saturday of the month):

Sat, Sep 09, 2006
Sat, Oct 14, 2006
Sat, Nov 11, 2006
Sat, Dec 09, 2006
Sat, Jan 13, 2007
Sat, Feb 10, 2007
Sat, Mar 10, 2007
Sat, Apr 14, 2007
Sat, May 12, 2007
Sat, Jun 09, 2007

Watch the website for information about programs and workshops. We'll post that information as it becomes available.

50/50 RAFFLE

In addition to our regular raffle at the June meeting, we will be having a 50/50 raffle. This is for the benefit of the Guild, so bring those dollar bills and let us raise as much money as we can for next year's programs. Just remember, you can be the lucky member who wins half of the proceeds! Just think of the fabric you can buy!

MEMBERS FLEA MARKET!!!!

We will be having a Members Flea Market at our June meeting. If you want to participate, bring what you want to sell. If you do not have enough for a full table, find a friend to share one with. 10% of what you sell will go to the Guild for our programs. All you have to do is bring your goods and sign up with Kitty Squire at the beginning of the meeting. As usual, no selling will be allowed during the business meeting and the program.

LAST CHANCE TO WIN!!!!

To be eligible for the \$25.00 gift certificate to the City Quilter, you must have renewed your membership by the June meeting. This means that you need to get your renewal to us **before** the meeting. There is still time! Just mail your renewal to Empire Quilters, Old Chelsea Station, P.O. Box 1293, New York, NY 10113. You can get a membership form on the next page in the newsletter or on our website: www.Empirequilters.net.

JUNE, 2006 CHALLENGE TO EMPIRE QUILTERS

At the May meeting some folks expressed an interest in having a periodic quilting challenge for all members. Jane Broaddus and Ligay Siachongco volunteered to head up a new committee and present the first challenge. So, at the June meeting, Jane and Ligaya are issuing the first challenge to Empire quilters. Make one or more fabric postcards with a NYC theme and bring them to the September 2006 guild meeting. Those who bring their completed postcard(s) to the meeting are eligible for a drawing to win a prize (To Be Announced). **Cont. pg. 10.**



2006-2007

OLD CHELSEA STATION, P.O. BOX 1293, NEW YORK, NY 10113 ♦ WWW.EMPIREQUILTERS.NET

*Empire Quilters Guild is dedicated to the art and craft of quilting. The collaboration promotes equally creativity and charity as it seeks to give the group a presence in the quilting and larger communities. **Annual Membership** entitles you to attend all meetings, receive newsletters, discounts at area quilt shops, use of the lending library, and the opportunity to serve on a volunteer committee.*

Yearly Dues: _____ **Regular \$35** _____ **Senior \$25** (65 and over)

Name: _____ Telephone: _____
 Address: _____ Fax: _____
 _____ Email: _____
 City, ST, Zip: _____ Birthday: _____

Which of the committee activities interest you?

- | | | | |
|---|---|---|---------------------------------------|
| <input type="checkbox"/> Block of the Month | <input type="checkbox"/> Library | <input type="checkbox"/> Public Relations | <input type="checkbox"/> Ways & Means |
| <input type="checkbox"/> Bus Trips | <input type="checkbox"/> Membership | <input type="checkbox"/> Quilt Show | <input type="checkbox"/> Website |
| <input type="checkbox"/> Charity/Service | <input type="checkbox"/> Newsletter Advertising | <input type="checkbox"/> Quilter of the Month | <input type="checkbox"/> Workshops |
| <input type="checkbox"/> Focus Groups | <input type="checkbox"/> Newsletter Editing | <input type="checkbox"/> Raffles (Monthly) | <input type="checkbox"/> Other: _____ |
| <input type="checkbox"/> History/Archives | <input type="checkbox"/> Newsletter Mailing | <input type="checkbox"/> Share Table | _____ |
| <input type="checkbox"/> Hospitality | <input type="checkbox"/> Programs | <input type="checkbox"/> Show & Tell | _____ |

Are you a member of the National Quilting Association? Yes No

Are you interested in being an officer or a committee chair of the Guild? Yes No

If yes, which positions interest you?:

Do you have special skills that you'd like the guild to know about? (i.e. grant writing, lawyer, public relations specialist, graphic designer, etc.). If so, please describe here (or attach an extra sheet):

Mail completed form to: **Empire Quilters**
 Old Chelsea Station
 P.O. Box 1293
 New York, NY 10113

Enclose a check for your annual dues payable to:
Empire Quilters. Pick up your membership card at the next guild meeting. *Memberships are not acknowledged by mail.* You will begin receiving the newsletter with the next issue.

<i>Office Use Only</i>	New Member
Check	Renewal
Cash	Senior
Money Order	Regular

March 2007 Empire Quilters Show Information

The title of the show is **Urban Inspirations** – and we will be emphasizing that Empire Quilters is celebrating our 25th anniversary with this show. The Show is scheduled for the weekend of March 24-25, with set-up on Friday March 23. As one expects, the highlight of the show will be the quilts presented by our members. Additionally we will have speakers and workshops, and a number of very fine vendors. We are still working on this and will let you know when specific speakers and vendors have been contracted.

The show will be held at FIT – there is a very good exhibition space, along with auditorium and seminar rooms. The entrance is on 28th street, near 7th Avenue – quite close to where we meet every month.

This is a judged show. This means that all submissions will be reviewed by 2 highly experienced judges – Eugenia Barnes and Donna Lamb, both affiliated with the Schweinfurth Art Center in Auburn, NY – but not in order to determine if a quilt qualifies to be hung. As long as some basic criteria are met (described below) all submissions will be eligible to be hung. Judging criteria and categories are listed below.

Submission process

This show is taking place in a smaller space than we've used in the past and so we may face some limitations in what we'll be able to display.

- Quilts may be submitted only by members who are active and in good standing by the November 2006 meeting.
- Each member may submit a Challenge Quilt (see details below)
- Additionally, each member may submit up to 2 other quilts. Certainly one will be displayed, and if space permits the second will be also hung. The quilter should specify preference for which to hang if more than one is submitted – in case space limits us to being able to hang only one.
- A submission form will be completed for each quilt (the specific entry form will be available by the September newsletter and meeting).
- Any quilt submitted must not exceed 86 inches by 100 inches (roughly queen sized).
- Each member who submits a quilt is required to volunteer a minimum of 4 hours to activities immediately preceding (within 1 month of the show), or during the show. The quilt entry form will have a place to indicate for what day, time and activity you want to volunteer. This must be completed for a quilt to be accepted.

Judging Criteria and categories

The judging will be completed prior to the quilts being hung. Subject to working out the schedule with the judges, we anticipate asking members to present their quilts for judging at the March 10, 2007 monthly meeting, which is 2 weeks prior to the show.

In order to be judged quilts must be finished at the time of the judging, have a four-inch sleeve affixed to the back, along with a label, stating the name of the quilt maker, the title of the quilt and an address. If these requirements are not fulfilled then the quilt will be disqualified. No exceptions will be made and the quilt will not be included in the show.

An unclean quilt or one with marks will disqualify the quilt maker from getting a ribbon.

There will be no tied quilts except for crazy quilts.

Submission Categories: There will be the possibility of 1st, 2nd and 3rd place ribbons in all categories. Not all these awards need to be given.

1. Hand quilted: pieced
2. Hand quilted: appliqué
3. (Self) Machine quilted - pieced
4. (Self) Machine quilted - appliqué
5. Commercially quilted - pieced
6. Commercially quilted - appliqué
7. Mixed / Other Techniques - including, but not limited to, yo-yo quilts, Hawaiian, fabric manipulations, whole cloth, painted cloth, crazy patchwork, etc.
8. President's Quilt Challenge - details of challenge below

Additional awards may be presented for:

- Judges choice
- Viewer's choice,
- Best use of color
- Best use of thread
- Best innovative quilt
- Best traditional quilt
- Best pictorial quilt
- Best pieced quilt
- Best hand appliqué
- Best machine appliqué
- Best Crazy quilt
- Best group quilt (includes, but not limited to, round robin quilts, quilts made by one person and quilted by another). However to be eligible for a prize all work must be done by members of the Empire Quilters Guild.
- Best miniature quilt (no bigger than 24" on any one size)

President's Challenge Quilt

A number of people have requested that this show include a challenge to the members. But few specific ideas have been suggested. My challenge to you is inspired in part by our Raffle Quilt, and all the lovely NY Beauty Blocks, but in larger part by who we all are, where we all live, and why our ancestors and relatives chose to come to America. Good luck - and I hope you have fun with this

Subject: Liberty – and what it means to you to be living in New York City, a most important entry point for the millions of immigrants that make this city and this country (and this guild) as wonderful and exciting as they are

Size: not to exceed a 'fat quarter' in size – that is 18 inches by 22 inches

Media – any you choose; remember to put a sleeve on the back to hang.

Show Fees:

Quilt(s) submission - \$20, non-refundable; it is \$20 whether you submit one or two quilts

Admission to show \$8 for 1 day; \$15 for 2 days;

- Empire Quilters members must pay the admission fee, even if volunteering that day. Those members who volunteer 4 or more hours at the time of the show will receive a rebate of one day's admission fee on the membership fee the following year. Leila Lieberman is heading up the Volunteer committee – so please let her know in what capacity you'd like to help.
- As we've seen other guilds do, we will provide a special discounted entry fee for groups from other Guilds or organizations that prepay for entry. This special group fee is NOT available to Empire Quilters members, but rather is an incentive for members of other Guilds to come see what we have to show. The group must register and purchase the admission in advance, and arrive as a group. We will provide the admission bands and materials when the group arrives at the show - not before. As many of us saw with Northern Star's show, travelers were able to take advantage of special group rates on MetroNorth Railroad. We'll be looking into this.

Raffle Quilt Tickets: In September we will give each member their allotment of raffle tickets to sell. Each member is asked to sell a minimum of 5 books of tickets. Each book will have 6 tickets, and is our custom, the price will be \$1 per ticket, or a book for \$5. Naturally, we hope everyone will sell many more than 5 books worth of tickets. The first prize will be our Raffle Quilt. We are working with manufacturers and retailers to secure other items to include in our raffle.

Please keep this two page section for future reference as you work on your quilt (s) for the show.

Post Card Challenge Continued:

Participants are encouraged to consider donating their postcard(s) for sale at the Member's boutique at the March, 2007 show.

Jane will distribute a handout with instructions and guidelines at the June meeting.

MAY SHOW & TELL

We were once again treated to an extraordinary variety of colors and styles at the May meeting. Thank you to the following members for sharing their pieces.

Mary Butler (*Anna's Lacework, Chinese Coins Mat, & Four-Square Sampler*), Anna Faustino (*Waiting for Grandpa, My Secret Planet, & East West Vest*), Judy Klein (*Garden Twist*), Marilyn Korn (*Nefertiti Crazy Quilt*), Anna Krassy (*Flights of Fancy at the Seashore*), Leila Lieberman (*Andrew's Quilt*), Barbara Rose (*Ricky Tims' Flower Power*), Jane Rosenthal (*My Little Manhattan – City Quilter Challenge Third Prize*), Ligaya Siachongco (*New York Mandala – City Quilter Challenge Second Prize, Hand Embroidered Round Quilt, & Fabric Collage Work in Progress*), Lorna Spence-Ellis (*Wash Day*) and Rhona Triggs (*Cutwork Appliqué*)

If you missed the meeting, you can see pictures of these works on the guild website. Look for the **Show & Tell** link. There *will* be a Show & Tell in June, so please bring your projects!

GUILD WEBSITE NEWS www.EmpireQuilters.net

Thank you to all of you who contributed news, information and suggestions for the guild's website this season. The website will be updated throughout the summer, so be sure to visit it often. Guild news and quilt show information will be posted as soon as it is available, and will be highlighted on the home page.

The **Links** page is a great reference tool if you are looking for supplies or inspiration. There are currently links to over 650 quilting related sites, and new sites are added all the time. You'll find links to the major quilt festivals, quilt supply sources, artists, quilt guilds, *and more!*

Please consider working on a service project or two this summer. The **Service** Page has many ideas and suggestions if you don't know where to start. We have a wonderful Service Committee, and they can find good homes for *all* the projects that are donated.

Our guild website is for all members, and we *welcome your input*. Please send any quilting-related information that you find interesting to info@empirequilters.net. Best wishes for a good summer. -- **Cindy Russell**

New York Beauties On the Town Raffle Quilt

The raffle quilt for the guild's 2007 *Urban Inspirations* quilt show was unveiled at the May 2006 meeting. It is a stunning piece! The quilt was created by the combined efforts of many members of Empire Quilters. The five compass blocks represent the five boroughs that make up the City of New York, and there are New York Beauty blocks everywhere — which is very fitting, since there is beauty to be found everywhere in our wonderful City.

The quilt is queen size (91" x 74.5") and was designed by guild members **Jennifer Bigelow, Paula Kenney** and **Kitty Squire**. The compass blocks were made by **Jennifer Bigelow, Sylvia Hughes, Anna Krassy** and **Kitty Squire**. The New York Beauty Blocks were contributed by *many* members of Empire Quilters. Yes, we have a talented, and generous bunch of quilters.

The machine quilting was donated by **Janice Jamison Hairston**, of Maison deJanice. The guild is extremely grateful for this service.

Raffle tickets will be available for members to sell at the September meeting. There will also be an order form posted on the website.

Pictures of the front and back of the quilt can be seen on page 14.

SHOWS AND EVENTS

Due to the length of the June newsletter, I will be omitting this feature until September. Please refer to the May newsletter or to the website for show info.

We are happy to introduce
our pretty little fabric shop...

purl
patchwork

a new source for all your quilting needs!

We feature cheerful vintage prints,
delicate historical reproduction fabrics,
beautiful contemporary designs,
and a rainbow of solid colors.

Purl Patchwork is at 147 Sullivan Street,
in New York City, between Prince and Houston.

Call us at 212-420-8798

And while you're in the area,
don't forget to visit our knitting store, Purl,
just down the street at 137 Sullivan Street.

Visit us online at

*purl*soho.com

STORE HOURS

MONDAY - FRIDAY 12-7 SATURDAY + SUNDAY 12-6

THE CITY QUILTER



For All Your Quilting Needs

133 West 25th Street
212-807-0390
www.cityquilter.com

Tuesday - Friday, 11 to 7
Saturday, 10 to 6
Sunday, 11 to 5

Guild Members
receive a 10% discount

Worried about the Quilt-deprivation blues?

Don't! We have lots of
great classes during the
summer to satisfy even the
most jaded quilter.

Check out our schedule at
www.cityquilter.com

See our classified ad on back page.

the quilt cottage
fabrics • yarn • gifts
414 mamaroneck avenue
mamaroneck, ny 10543
(914) 777-1333

distinctive collection of
cotton fabrics

unique assortment
of
ribbons,
swiss laces
&
trims

colorful,
funky,
yarns

hours:
monday - saturday
10-6
www.quiltcottage.net

sewing machine
repairs

quilt finishing
&
restoration

one block south of
Metro North
(mamaroneck station)

special
orders

fabric buyers discount card

directions:
Hutchinson River Parkway
Exit 23S or I-95 NYS Thruway
Exit 18A (Mamaroneck Avenue)
to Mamaroneck business district.
1/4 mile from railroad station
on right-hand side.

A QUILTER'S NOTION

Bringing Your Stash To Life...

**Quilting & Sewing Instruction
Fabrics & Notions**

59-08 Woodside Ave
Woodside, NY 11377
718-424-4691 // 718-424-4692
www.aquiltersnotion.com
quilters@aquiltersnotion.com

Margie Givney / Owner

Don't Forget To Ask About Our
Guild Member & Senior Discounts.

We are conveniently located 1 block from the
61st #7 subway line, LIRR Woodside stop,
Q53, Q18, M/Q32 & M/Q60 bus lines.



The Quilting Bug

Large selection
of Quilting
Fabrics, Patterns
Books
& Classes

30C Broadway
Massapequa, NY 11758

Phone: 516-541-8600
Fax: 516-541-8601
e-mail
thequiltingbug@optonline.net
Website: thequiltingbugny.com

1 block north of the
Massapequa train station
on the corner of Broadway
and New York Ave.

**10% Discount to Empire
Guild Members**



Little Red Quilt House

20 Wilson Street, Fairfield, CT 06825-1419
P: (203) 258-9464 F: (203) 371-6148
www.LRQH.Com Sales@LRQH.Com

EQG Members 10% OFF

*Any Quilt! Any Condition!
We'll Do It!*



MQA Member Since 2002

Hand Crafted Fabrics

Fat Cuts

Full Yards \$ 9.95
Half Yard \$ 5.25
Fat Quarters \$ 2.95
Fat Eighths \$ 1.95

800 shades
Cotton &
Phabulous
Phannels!

Precision Finishing Services

Pantograph Quilting	\$0.01 / square inch
Special Quilting	\$0.02 / square inch
Custom Quilting	\$0.03 / square inch
Binding Services	Call us about custom hand dyed binding fabrics
Machine Binding	\$0.05/inch
Hand Binding	\$2.00 / foot
Basting Service	
Double, Twin size bed or smaller	\$20.00
Queen to Super Queen size	\$35.00
King Size bed to tapestry	\$50.00

Finishing's Not Our Hobby, It's Our Business!

2007 QUILT SHOW EXPENSES

The following show budget items (over \$25.00) need to be addressed and approved prior to the September meeting:

1. Show Space Rental \$7000.00 - Already approved
2. Additional Show Space Rental- up to 6 Seminar rooms - @ \$100.00 per day - plus \$200.00 weekend surcharge \$1400.00
3. Judges fees with contract - \$1000.00 est
4. Speaker fees -- \$2000.00 est
5. Raffle Tickets - \$250.00-- Already approved
6. Postcard printing - \$400.00 -- Already approved
7. Frame pole rental - \$300.00

RAFFLE QUILT PICTURES

Quilt Front:



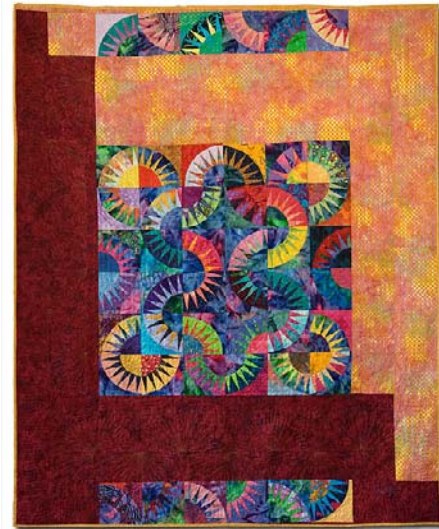
JUNE BIRTHDAY'S

Marge O'Neill, Teresa Vega, Janis Comerford, Lucia Chan, Evelyina Ojoe, June Calender, Priscilla Blakemore, Anita Duncan, Shirley Levine, Merle Goldberg, Mary Ferry, Janice Fongkin, Janina Hannum, Laverne Ramgoolie, Diane Pryor-Holland, Kelly Rusinek, Janet Randolph, Margaret Geary, Linda Miller, Anne Scher, Helen Tiger, John Kubiniec, Jean Wirth, Beth Pile, Cornelia Acquaotta, Alice Brody, Lois Sautter.

JULY BIRTHDAY'S

Claire Leffel, Carol Gressert, Diane Harris, Diane Rode Schneck, Sandy Schipior, Carolyn Gottfried-Kahn, Barbara Mims, Lauren Smetko Dieterich, Barbara Rose, Winnifred Sanders, Alberta Chamblee, Juliana Kalloo, Josephine Franc, Kitty Squire, Christine D'Onofrio, Carol Gray, Catherine Bancroft, Carol Gressert, Franziska Reide.

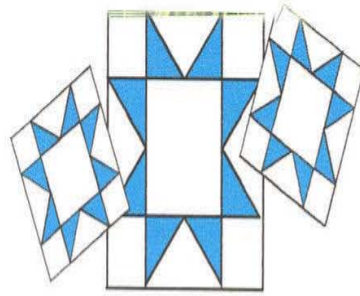
Quilt Back:



AUGUST BIRTHDAY'S

Elizabeth Burpee, Elizabeth Baker, Susan McGrath, Eve Winer, Mary Ann Cavalleri, Paula Kenney, Laura Burg, Veronique Milliez, Millicent Lana, Sylvia Hodge, Wanda Janicke, Deborah Jane Slavitt, Cynthia Spurles, Rita Shramm, Rose Thayaparan, Denise Walsh, Emma E. Green.

**HAVE A HAPPY, HEALTHY AND
PRODUCTIVE QUILTING
SUMMER!**



STOVER QUALITY QUILTING

All over patterns, Outline, In the Ditch, Marked and Stamped Patterns, plus Combinations

all hand guided

Backings and Battings also available

For free brochure, price list and information, please call 1-800-521-4171 or 573-377-2303

Or write to Stover Quality Quilting, 606 North Ash, Stover, MO 65078

e-mail: Stoversq@advertisnet.com

CELEBRATING over 60 years of Custom Machine Quilting

RAFFLE COMMITTEE

The Raffle Committee wants to especially thank Leila Lieberman, Veronique Milliez, Jennifer Bigelow, Ulla-Brita McCarthy, Barbara Hull, Beth Pile, Alice Palmer, Diane Rubenstein, Alice Oberstein, Sister Cynthia Cunningham, Nancy Castel and all our generous anonymous donors. You have all helped make the April and May Raffles very successful. We also want to thank Betty Chen who "sold up a storm" in May and of course, a big thank you to Michael Fung and his pal, Jimmy for pulling the winning tickets!

--Anita, Pat and Joann

NEWSLETTER DEADLINE

The deadline for the September, 2006 newsletter is: **Wednesday, August 16, 2006**. Please send information to: Linda Lee Kelly, 950 Oaks Drive, Franklin Square, NY 11010 or e-mail: LKELLY20@OPTONLINE.NET.

WORKSHOP REGISTRATION POLICY

Payment in full for workshops is required by the date of the workshop. Members who cancel up to 7 days prior to the workshop will be refunded in full. If you cancel after that, refunds will be made **only** if a replacement student can be found.

OPPORTUNITY AT CITY QUILTER

The City Quilter looks for new staff from time to time, and would like to expand the pool of people considered when openings occur. Consequently, we are asking Guild members potentially interested in working at the shop to send in their resumes and a brief note about their interest, indicating when they might be able to work. Please address to Dale c/o City Quilter, 133 West 25th St, New York, NY 10001. Or e-mail: Dale@cityquilter.com.

New York Disaster Interfaith Services (NYDIS) has opened a Katrina Evacuee Clothing Mart at St. Peter's Roman Catholic Church on Church St between Barclay and Vesey. (The A/C/E to Chambers St. or the 2/3 to Park Place.). They will accept the donation of new quilts **Monday-Saturday, 10 am-6 pm**. Their number is **347-387-3678**.

 Katrina/Rita Hurricane Relief: Quilts still needed for pre-k to 6th grade. They have over 2,000 student evacuees in Alexandria. Quilts to be sent to: **Rapides Parish School Board**
619 Sixth St., Alexandria, LA 71301 Attn: Karen Lafargue, District Superintendent 318-449-3109.
 Any questions, you can contact **Teresa Vega** at: (212) 942-9310

2005 -2006 OFFICERS AND CHAIRS

President:	Jennifer Bigelow (203) 323-5138
First Vice Pres:	Marilyn Korn (212) 206-7203
Second Vice Pres:	Michael Greenberg (646) 638-2826
Treasurer:	Kitty Squire (718) 956-3005
Secretary:	Gail Lefton (718) 762-5499 **
Block of the Month:	Anna Krassy 212-242-3253 **
Bus Trips:	Franziska Riede (631) 805-0621
By-Laws:	Jennifer Bigelow (203) 323-5138
Focus Groups:	Anna Faustino (201) 246-1142 **
History/Archives:	Mary Levins (516) 746-2936
Library:	Sylvia Hughes (212)-665-5036 Tina Barth (212) 691-3108 Pearl Chow (718) 263-5483
Membership:	Emma Green (718) 723-8405 Maggie Williamson (718) 798-3692
Newsletter. Advert.	Cynthia Spurles (718) 545-4406
Newsletter Editor:	Linda Lee Kelly (516) 352-2268
Newsletter Mailing:	Susan Louis (718) 658-8352
Nominating:	Sylvia Hughes (212) 665-5036
NQA Coordinator:	Beth Pile(631) 286-5532
Programs:	Barbara Hull (718) 229-4895
Quilter / Month:	Debra J. Levin (212) 832-8575 **
Raffle:	Pat Decker (212) 725-5345 JoAnn Montalbano (516) 770-3656 Anita Duncan (212) 889-2067
Service:	Denise Walsh-Horowitz (718) 454-1944 Alice Oberstein (718) 591-4639 Marion Webber (718) 276-3852
Share Table:	Veronique Milliez (212) 534-6604 Anna Krassy (212) 242-3253
Show & Tell:	Sylvia Hughes (212) 665-5036
Sunshine:	Beth Pile (631) 286-5532
2007 Quilt Show:	Larry Gifford (212) 717-0892
Ways & Means:	Paula Kenney (212) 982-8043
Website:	Cindy Russell (212) 414-9201
Welcoming:	Beth Pile (631) 286-5532
Workshops:	Mary Butler (212) 662-7771

** New Board/Chair member

HAVE A GREAT SUMMER